



SZABO SCANDIC

Part of Europa Biosite

Produktinformation



Forschungsprodukte & Biochemikalien



Zellkultur & Verbrauchsmaterial



Diagnostik & molekulare Diagnostik



Laborgeräte & Service

Weitere Information auf den folgenden Seiten!
See the following pages for more information!



Lieferung & Zahlungsart

siehe unsere [Liefer- und Versandbedingungen](#)

Zuschläge

- Mindermengenzuschlag
- Trockeneiszuschlag
- Gefahrgutzuschlag
- Expressversand

SZABO-SCANDIC HandelsgmbH

Quellenstraße 110, A-1100 Wien

T. +43(0)1 489 3961-0

F. +43(0)1 489 3961-7

mail@szabo-scandic.com

www.szabo-scandic.com

[linkedin.com/company/szaboscandic](https://www.linkedin.com/company/szaboscandic) 

PRKDC monoclonal antibody (M02), clone 1B9

Catalog # : H00005591-M02

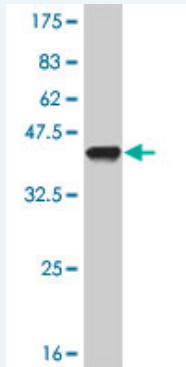
規格 : [100 ug]

[List All](#)

Specification

Product Description:	Mouse monoclonal antibody raised against a partial recombinant PRKDC.
Immunogen:	PRKDC (NP_008835, 4019 a.a. ~ 4128 a.a) partial recombinant protein with GST tag. MW of the GST tag alone is 26 KDa.
Sequence:	KMLKKGGSWQIEINVAEKNWYPRQKICYAKRKLAPANPAVITCDELLLGH EKAPAFRDYVAVARGSKDHNIRAQEPESGLSEETQVKCLMDQATDPNIL GRTWEGREPWM
Host:	Mouse
Reactivity:	Human
Isotype:	IgG2a Kappa

Quality Control Testing: Antibody Reactive Against Recombinant Protein.



Western Blot detection against Immunogen (37.84 KDa) .

Storage Buffer: In 1x PBS, pH 7.4

Storage Instruction: Store at -20°C or lower. Aliquot to avoid repeated freezing and thawing.

MSDS: [Download](#)

Datasheet: [Download](#)

Publication Reference

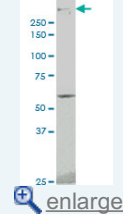
1. Quantification of the Host Response Proteome after Herpes Simplex 1 Virus infection. Berard AR, Coombs KM, Severini AJ Proteome Res. 2015 Apr 15.

Applications

Western Blot (Cell lysate)

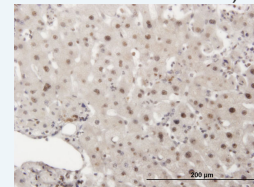
Application Image

Western Blot (Cell lysate)



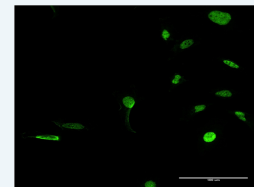
Western Blot (Recombinant protein)

Immunohistochemistry (Formalin/PFA-fixed paraffin-embedded sections)



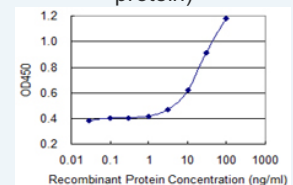
[enlarge](#)

Immunofluorescence



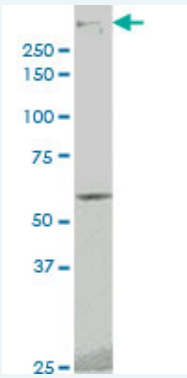
[enlarge](#)

Sandwich ELISA (Recombinant protein)



[enlarge](#)

ELISA



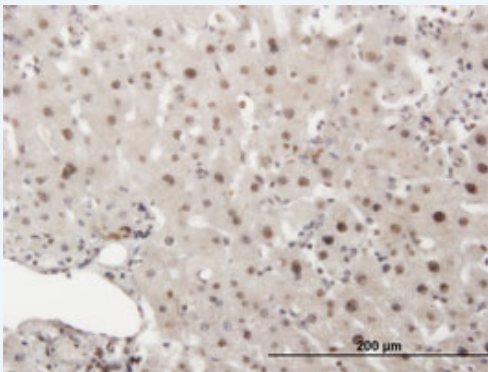
PRKDC monoclonal antibody (M02), clone 1B9 Western Blot analysis of PRKDC expression in A-431 (Cat # L015V1).

[Protocol Download](#)

Western Blot (Recombinant protein)

[Protocol Download](#)

Immunohistochemistry (Formalin/PFA-fixed paraffin-embedded sections)

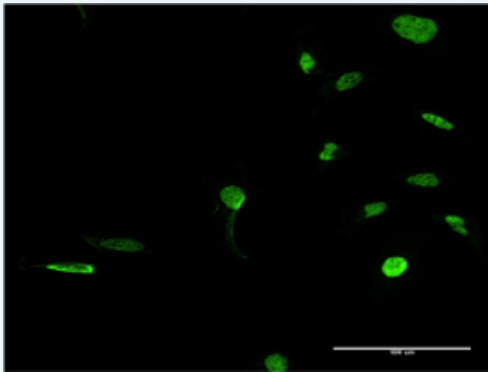


[enlarge this image](#)

Immunoperoxidase of monoclonal antibody to PRKDC on formalin-fixed paraffin-embedded human liver. [antibody concentration 3 ug/ml]

[Protocol Download](#)

Immunofluorescence

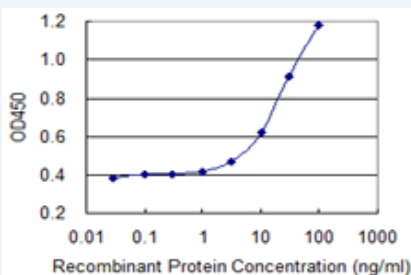


[enlarge this image](#)

Immunofluorescence of monoclonal antibody to PRKDC on HeLa cell . [antibody concentration 10 ug/ml]

[Protocol Download](#)

Sandwich ELISA (Recombinant protein)



Detection limit for recombinant GST tagged PRKDC is 1 ng/ml as a capture antibody.

[Protocol Download](#)

ELISA

Gene Information

Entrez GeneID: [5591](#)

GeneBank
Accession#: [NM_006904](#)

Protein
Accession#: [NP_008835](#)

Gene Name: PRKDC

Gene Alias: DNA-PKcs, DNAPK, DNP1, HYRC, HYRC1, XRCC7, p350

Gene
Description: protein kinase, DNA-activated, catalytic polypeptide

Omim ID: [600899](#)

Gene Ontology: [Hyperlink](#)

Gene Summary: The PRKDC gene encodes the catalytic subunit of a nuclear DNA-dependent serine/threonine protein kinase (DNA-PK). The second component is the autoimmune antigen Ku (MIM 152690), which is encoded by the G22P1 gene on chromosome 22q. On its own, the catalytic subunit of DNA-PK is inactive and relies on the G22P1 component to direct it to the DNA and trigger its kinase activity; PRKDC must be bound to DNA to express its catalytic properties.[supplied by OMIM

Other
Designations: hyper-radiosensitivity of murine scid mutation, complementing 1

Gene Pathway

[Cell cycle](#) [Non-homologous end-joining](#)

Related Disease

[Adenocarcinoma](#) [Ataxia telangiectasia](#) [Bone Neoplasms](#) [Brain Neoplasms](#) [Breast cancer](#)
[Breast Neoplasms](#) [Carcinoma, Papillary](#) [Carcinoma, Renal Cell](#)
[Carcinoma, Transitional Cell](#) [Central Nervous System Neoplasms](#) [DNA Damage](#)
[Genetic Predisposition to Disease](#) [Glioma](#) [Head and Neck Neoplasms](#)
[Hematologic Diseases](#) [Hodgkin Disease](#) [Kidney Neoplasms](#) [Lung Neoplasms](#)
[Lymphoma, Non-Hodgkin](#)

... see more