



# SZABO SCANDIC

Part of Europa Biosite

## Produktinformation



Forschungsprodukte & Biochemikalien



Zellkultur & Verbrauchsmaterial



Diagnostik & molekulare Diagnostik



Laborgeräte & Service

Weitere Information auf den folgenden Seiten!  
See the following pages for more information!



### Lieferung & Zahlungsart

siehe unsere [Liefer- und Versandbedingungen](#)

### Zuschläge

- Mindermengenzuschlag
- Trockeneiszuschlag
- Gefahrgutzuschlag
- Expressversand

### SZABO-SCANDIC HandelsgmbH

Quellenstraße 110, A-1100 Wien

T. +43(0)1 489 3961-0

F. +43(0)1 489 3961-7

[mail@szabo-scandic.com](mailto:mail@szabo-scandic.com)

[www.szabo-scandic.com](http://www.szabo-scandic.com)

[linkedin.com/company/szaboscandic](https://www.linkedin.com/company/szaboscandic) 

## PRKG1 monoclonal antibody (M01), clone 5E5

Catalog # : H00005592-M01

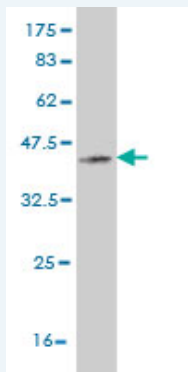
規格 : [ 100 ug ]

[List All](#)

### Specification

<b>Product Description:</b>	Mouse monoclonal antibody raised against a partial recombinant PRKG1.
<b>Immunogen:</b>	PRKG1 (NP_006249, 73 a.a. ~ 170 a.a) partial recombinant protein with GST tag. MW of the GST tag alone is 26 KDa.
<b>Sequence:</b>	RTKRQAISAEPTAFDIQDLSHVTLPFYPKSPQSKDLIKEAILDNDFMKNLELSQIQEIVDCMYPVEYGKDSCIIKEGDVGLVYVMEDGKVEVTKEGV
<b>Host:</b>	Mouse
<b>Reactivity:</b>	Human
<b>Isotype:</b>	IgG1 Kappa

**Quality Control Testing:** Antibody Reactive Against Recombinant Protein.



Western Blot detection against Immunogen (36.52 KDa) .

**Storage Buffer:** In 1x PBS, pH 7.4

**Storage Instruction:** Store at -20°C or lower. Aliquot to avoid repeated freezing and thawing.

**MSDS:** [Download](#)

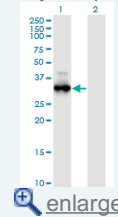
**Datasheet:** [Download](#)

### Applications

**Western Blot (Transfected lysate)**

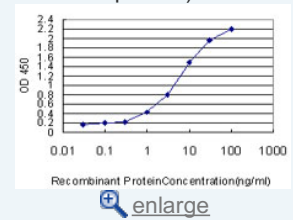
### Application Image

Western Blot (Transfected lysate)

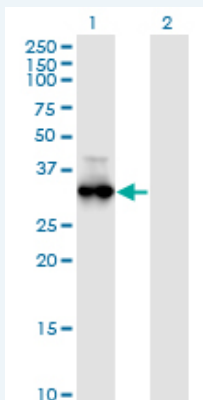


Western Blot (Recombinant protein)

Sandwich ELISA (Recombinant protein)



ELISA



Western Blot analysis of PRKG1 expression in transfected 293T cell line by PRKG1 monoclonal antibody (M01), clone 5E5.

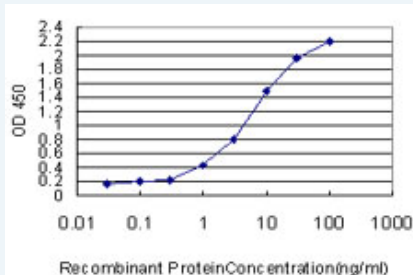
Lane 1: PRKG1 transfected lysate(35.5 KDa).  
Lane 2: Non-transfected lysate.

[Protocol Download](#)

### Western Blot (Recombinant protein)

[Protocol Download](#)

### Sandwich ELISA (Recombinant protein)



Detection limit for recombinant GST tagged PRKG1 is approximately 0.03ng/ml as a capture antibody.

[Protocol Download](#)

### ELISA

### Gene Information

Entrez GeneID: [5592](#)

GeneBank [NM\\_006258](#)  
Accession#:

Protein [NP\\_006249](#)  
Accession#:

Gene Name: PRKG1

Gene Alias: CGKI,DKFZp686K042,FLJ36117,MGC71944,PGK,PKG,PRKG1B,PRKG R1B,cGKI-BETA,cGKI-alpha

Gene Description: protein kinase, cGMP-dependent, type I

Omim ID: [176894](#)

Gene Ontology: [Hyperlink](#)

Other Designations: OTTHUMP00000019619,OTTHUMP000000061216,protein kinase, cGMP-dependent, regulatory, type I, beta

## Gene Pathway

---

[Gap junction](#) [Long-term depression](#) [Olfactory transduction](#)  
[Vascular smooth muscle contraction](#)

## Related Disease

---

[Alzheimer Disease](#) [Attention Deficit Disorder with Hyperactivity](#) [Brain Ischemia](#)  
[Cardiovascular Diseases](#) [Cerebral Hemorrhage](#) [Coronary Disease](#)  
[Diabetes Mellitus, Type 2](#) [Diseases in Twins](#) [Edema](#) [Genetic Predisposition to Disease](#)  
[Hypertension](#) [Intracranial Hemorrhages](#) [Mental Status Schedule](#) [Myocardial Infarction](#)  
[Obesity](#) [Obesity](#) [Personality Inventory](#) [Stroke](#) [Subarachnoid Hemorrhage](#)

... see more

---

[服務條款](#) | [隱私權政策](#) | [著作及商標](#) | [網站地圖](#)

©2016 亞諾法生技股份有限公司 Abnova Corporation. 版權所有.