



SZABO SCANDIC

Part of Europa Biosite

Produktinformation



Forschungsprodukte & Biochemikalien



Zellkultur & Verbrauchsmaterial



Diagnostik & molekulare Diagnostik



Laborgeräte & Service

Weitere Information auf den folgenden Seiten!
See the following pages for more information!



Lieferung & Zahlungsart

siehe unsere [Liefer- und Versandbedingungen](#)

Zuschläge

- Mindermengenzuschlag
- Trockeneiszuschlag
- Gefahrgutzuschlag
- Expressversand

SZABO-SCANDIC HandelsgmbH

Quellenstraße 110, A-1100 Wien

T. +43(0)1 489 3961-0

F. +43(0)1 489 3961-7

mail@szabo-scandic.com

www.szabo-scandic.com

[linkedin.com/company/szaboscandic](https://www.linkedin.com/company/szaboscandic) 

PRKG1 293T Cell Transient Overexpression Lysate(Denatured)

Catalog # : H00005592-T01

規格 : [100 uL]

List All

Specification

Transfected Cell Line: 293T

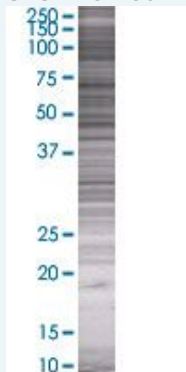
Plasmid: pCMV-PRKG1 full-length

Host: Human

Theoretical MW (kDa): 34.43

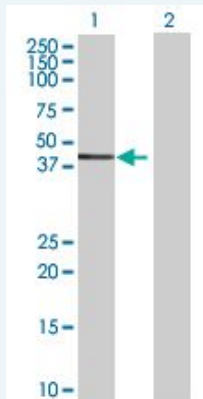
Quality Control Testing: Transient overexpression cell lysate was tested with Anti-PRKG1 antibody ([H00005592-B01](#)) by Western Blots.

SDS-PAGE Gel



PRKG1 transfected lysate.

Western Blot



Lane 1: PRKG1 transfected lysate (34.43 KDa)

Lane 2: Non-transfected lysate.

Storage Buffer: 1X Sample Buffer (50 mM Tris-HCl, 2% SDS, 10% glycerol, 300 mM 2-mercaptoethanol, 0.01% Bromophenol blue)

Storage Instruction: Store at -80°C. Aliquot to avoid repeated freezing and thawing.

MSDS:  [Download](#)

Applications

Application Image

Western Blot

Western Blot

Gene Information

Entrez GeneID: [5592](#)

GeneBank [BC062688.1](#)
Accession#:

Protein [AAH62688.1](#)
Accession#:

Gene Name: PRKG1

Gene Alias: CGKI,DKFZp686K042,FLJ36117,MGC71944,PGK,PKG,PRKG1B,PRKG R1B,cGKI-BETA,cGKI-alpha

Gene Description: protein kinase, cGMP-dependent, type I

Omim ID: [176894](#)

Gene Ontology: [Hyperlink](#)

Other Designations: OTTHUMP00000019619,OTTHUMP000000061216,protein kinase, cGMP-dependent, regulatory, type I, beta

Gene Pathway

[Gap junction](#) [Long-term depression](#) [Olfactory transduction](#)
[Vascular smooth muscle contraction](#)

Related Disease

[Alzheimer Disease](#) [Attention Deficit Disorder with Hyperactivity](#) [Brain Ischemia](#)
[Cardiovascular Diseases](#) [Cerebral Hemorrhage](#) [Coronary Disease](#)
[Diabetes Mellitus, Type 2](#) [Diseases in Twins](#) [Edema](#) [Genetic Predisposition to Disease](#)
[Hypertension](#) [Intracranial Hemorrhages](#) [Mental Status Schedule](#) [Myocardial Infarction](#)
[Obesity](#) [Obesity](#) [Personality Inventory](#) [Stroke](#) [Subarachnoid Hemorrhage](#)

... see more