



SZABO SCANDIC

Part of Europa Biosite

Produktinformation



Forschungsprodukte & Biochemikalien



Zellkultur & Verbrauchsmaterial



Diagnostik & molekulare Diagnostik



Laborgeräte & Service

Weitere Information auf den folgenden Seiten!
See the following pages for more information!



Lieferung & Zahlungsart

siehe unsere [Liefer- und Versandbedingungen](#)

Zuschläge

- Mindermengenzuschlag
- Trockeneiszuschlag
- Gefahrgutzuschlag
- Expressversand

SZABO-SCANDIC HandelsgmbH

Quellenstraße 110, A-1100 Wien

T. +43(0)1 489 3961-0

F. +43(0)1 489 3961-7

mail@szabo-scandic.com

www.szabo-scandic.com

[linkedin.com/company/szaboscandic](https://www.linkedin.com/company/szaboscandic) 

MAPK1 monoclonal antibody (M01), clone 1D1

Catalog # : H00005594-M01

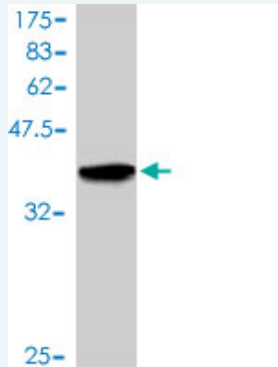
規格 : [100 ug]

[List All](#)

Specification

Product Description:	Mouse monoclonal antibody raised against a full length recombinant MAPK1.
Immunogen:	MAPK1 (AAH17832, 261 a.a. ~ 360 a.a) full-length recombinant protein with GST tag. MW of the GST tag alone is 26 KDa.
Sequence:	RNYLLSLPHKNKVPWNRLFPNADSKALDLLDKMLTFNPHKRIEVEQALAH PYLEQYYDPSDEPIAEAPFKFDMELDDLPEKELKELIFEETARFQPGYRS
Host:	Mouse
Reactivity:	Human
Isotype:	IgG1 kappa

Quality Control Testing: Antibody Reactive Against Recombinant Protein.



Western Blot detection against Immunogen (36.63 KDa) .

Storage Buffer: In 1x PBS, pH 7.4

Storage Instruction: Store at -20°C or lower. Aliquot to avoid repeated freezing and thawing.

MSDS: [Download](#)

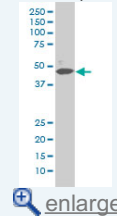
Datasheet: [Download](#)

Applications

Western Blot (Cell lysate)

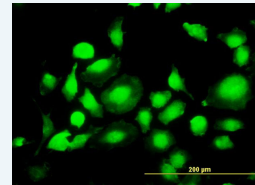
Application Image

Western Blot (Cell lysate)

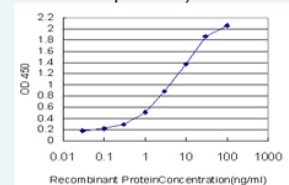


Western Blot (Recombinant protein)

Immunofluorescence

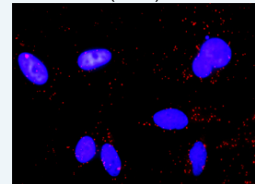


Sandwich ELISA (Recombinant protein)

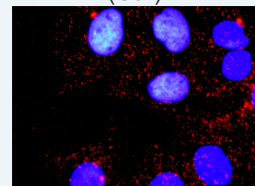


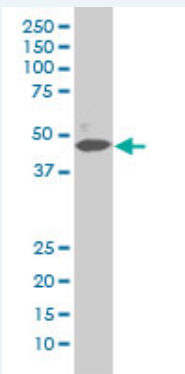
ELISA

In situ Proximity Ligation Assay (Cell)



In situ Proximity Ligation Assay (Cell)





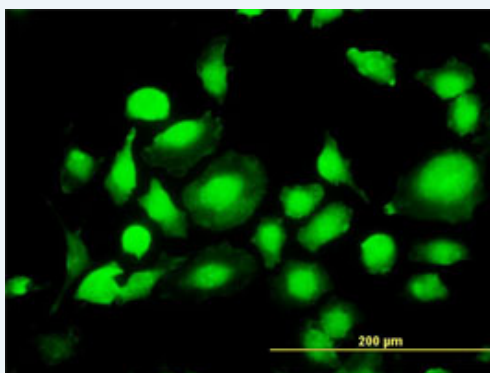
MAPK1 monoclonal antibody (M01), clone 1D1 Western Blot analysis of MAPK1 expression in HeLa S3 NE (Cat # L013V3).

[Protocol Download](#)

Western Blot (Recombinant protein)

[Protocol Download](#)

Immunofluorescence

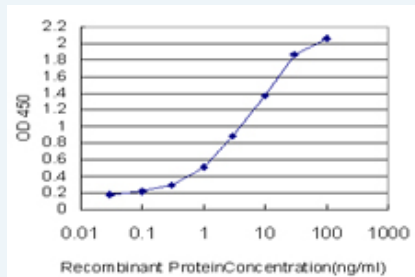


[enlarge this image](#)

Immunofluorescence of monoclonal antibody to MAPK1 on HeLa cell. [antibody concentration 10 ug/ml]

[Protocol Download](#)

Sandwich ELISA (Recombinant protein)

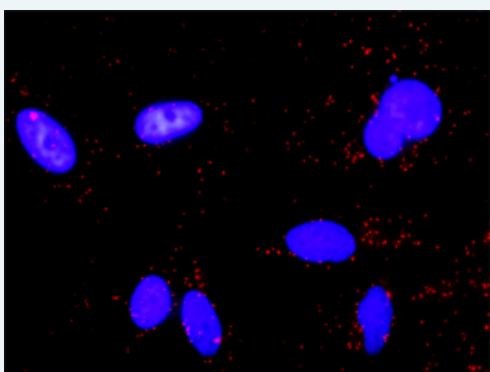


Detection limit for recombinant GST tagged MAPK1 is approximately 0.03ng/ml as a capture antibody.

[Protocol Download](#)

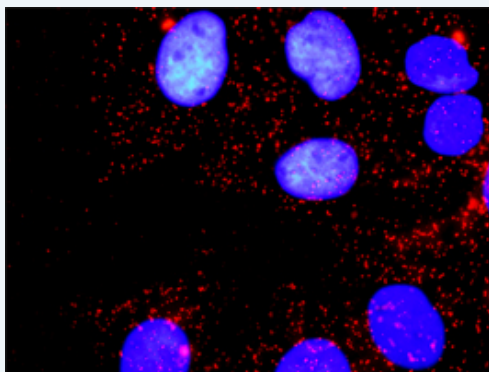
ELISA

In situ Proximity Ligation Assay (Cell)



Proximity Ligation Analysis of protein-protein interactions between TP53 and MAPK1. HeLa cells were stained with anti-TP53 rabbit purified polyclonal 1:1200 and anti-MAPK1 mouse monoclonal antibody 1:50. Each red dot represents the detection of protein-protein interaction complex, and nuclei were counterstained with DAPI (blue).

***In situ* Proximity Ligation Assay (Cell)**



Proximity Ligation Analysis of protein-protein interactions between MAPK3 and MAPK1. Huh7 cells were stained with anti-MAPK3 rabbit purified polyclonal 1:1200 and anti-MAPK1 mouse monoclonal antibody 1:50. Each red dot represents the detection of protein-protein interaction complex, and nuclei were counterstained with DAPI (blue).

Gene Information

Entrez GeneID: [5594](#)

GeneBank Accession#: [BC017832](#)

Protein Accession#: [AAH17832](#)

Gene Name: MAPK1

Gene Alias: ERK,ERK2,ERT1,MAPK2,P42MAPK,PRKM1,PRKM2,p38,p40,p41,p41mapk

Gene Description: mitogen-activated protein kinase 1

Omim ID: [176948](#)

Gene Ontology: [Hyperlink](#)

Gene Summary: The protein encoded by this gene is a member of the MAP kinase family. MAP kinases, also known as extracellular signal-regulated kinases (ERKs), act as an integration point for multiple biochemical signals, and are involved in a wide variety of cellular processes such as proliferation, differentiation, transcription regulation and development. The activation of this kinase requires its phosphorylation by upstream kinases. Upon activation, this kinase translocates to the nucleus of the stimulated cells, where it phosphorylates nuclear targets. Two alternatively spliced transcript variants encoding the same protein, but differing in the UTRs, have been reported for this gene. [provided by RefSeq]

Other Designations: OTTHUMP00000174492,extracellular signal-regulated kinase 2,extracellular signal-regulated kinase-2,mitogen-activated protein kinase 2,protein tyrosine kinase ERK2

Gene Pathway

[Acute myeloid leukemia](#) [Adherens junction](#) [Alzheimer's disease](#) [Axon guidance](#) [B cell receptor signaling pathway](#) [Bladder cancer](#) [Chemokine signaling pathway](#) [Chronic myeloid leukemia](#) [Colorectal cancer](#) [Dorso-ventral axis formation](#) [Endometrial cancer](#) [ErbB signaling pathway](#) [Fc epsilon RI signaling pathway](#)

[Fc gamma R-mediated phagocytosis](#) [Focal adhesion](#) [Gap junction](#) [Glioma](#)
[GnRH signaling pathway](#) [Insulin signaling pathway](#) [Long-term depression](#)
[Long-term potentiation](#) [MAPK signaling pathway](#) [Melanogenesis](#) [Melanoma](#)
[mTOR signaling pathway](#) [Natural killer cell mediated cytotoxicity](#)
[Neurotrophin signaling pathway](#) [Non-small cell lung cancer](#) [Pancreatic cancer](#)
[Pathways in cancer](#) [Prion diseases](#) [Prostate cancer](#) [Regulation of actin cytoskeleton](#)
[Renal cell carcinoma](#) [T cell receptor signaling pathway](#) [TGF-beta signaling pathway](#)
[Thyroid cancer](#) [Toll-like receptor signaling pathway](#) [Type II diabetes mellitus](#)
[Vascular smooth muscle contraction](#) [VEGF signaling pathway](#)

Related Disease

[Anorexia Nervosa](#) [Asthma](#) [Asthma](#) [Bulimia](#) [Cardiovascular Diseases](#)
[Diabetes Mellitus, Type 2](#) [Disease Models, Animal](#) [Edema](#)
[Genetic Predisposition to Disease](#) [HIV Infections](#) [Kidney Failure, Chronic](#) [Narcolepsy](#)
[Ovarian Neoplasms](#) [Thyroid Neoplasms](#)

[服務條款](#) | [隱私權政策](#) | [著作及商標](#) | [網站地圖](#)

©2016 亞諾法生技股份有限公司 Abnova Corporation. 版權所有.