



SZABO SCANDIC

Part of Europa Biosite

Produktinformation



Forschungsprodukte & Biochemikalien



Zellkultur & Verbrauchsmaterial



Diagnostik & molekulare Diagnostik



Laborgeräte & Service

Weitere Information auf den folgenden Seiten!
See the following pages for more information!



Lieferung & Zahlungsart

siehe unsere [Liefer- und Versandbedingungen](#)

Zuschläge

- Mindermengenzuschlag
- Trockeneiszuschlag
- Gefahrgutzuschlag
- Expressversand

SZABO-SCANDIC HandelsgmbH

Quellenstraße 110, A-1100 Wien

T. +43(0)1 489 3961-0

F. +43(0)1 489 3961-7

mail@szabo-scandic.com

www.szabo-scandic.com

[linkedin.com/company/szaboscandic](https://www.linkedin.com/company/szaboscandic) 

MAPK3 purified MaxPab rabbit polyclonal antibody (D01P) MaxPab®

Catalog # : H00005595-D01P

規格 : [100 ug]

[List All](#)

Specification

Product Description: Rabbit polyclonal antibody raised against a full-length human MAPK3 protein.

Immunogen: MAPK3 (AAH13992.1, 1 a.a. ~ 379 a.a) full-length human protein.

Sequence:
 MAAAAAQGGGGGEPRTTEGVGPGVPGEVEMVKGQPFVVGPRYTQLQ
 YIGEGAYGMVSSAYDHRKTRVAIKKISPFHQTYCQRTLREIQILLRFRH
 ENVIGIRDILRASTLEAMRDVYIVQDLMETDLYKLLKSQQLSNDHICYFLYQ
 ILRGLKYIHSANMLHRDLKPSNLLINTTCDLKICDFGLARIADPEHDHTGFLT
 EYVATRWYRAPEIMLNSKGYTKSIDWSVGCILAEMLSNRPIFPKGKHYLDQ
 LNHILGILGSPSQEDLNCIINMKARNYLQSLPSKTQVAVAKLFPKSDSKAL
 DLLDRMLTFNPNKRITVEEALAHPLYEQYYDPTDEPVAEEPF TFAMELDD
 LPKERLKEIFQETARFQPGVLEAP

Host: Rabbit

Reactivity: Human

Quality Control Testing: Antibody reactive against mammalian transfected lysate.

Storage Buffer: In 1x PBS, pH 7.4

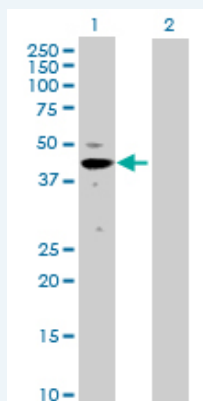
Storage Instruction: Store at -20°C or lower. Aliquot to avoid repeated freezing and thawing.

MSDS: [Download](#)

Datasheet: [Download](#)

Applications

Western Blot (Transfected lysate)



Western Blot analysis of MAPK3 expression in transfected 293T cell line ([H00005595-T01](#)) by MAPK3 MaxPab polyclonal antibody.

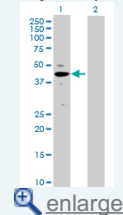
Lane 1: MAPK3 transfected lysate(43.10 KDa).

Lane 2: Non-transfected lysate.

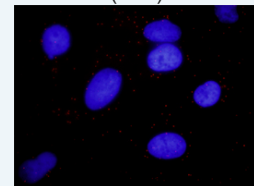
[Protocol Download](#)

Application Image

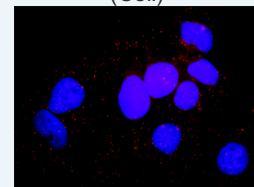
Western Blot (Transfected lysate)



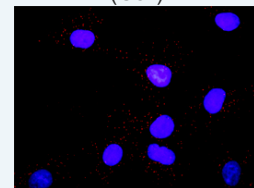
In situ Proximity Ligation Assay (Cell)



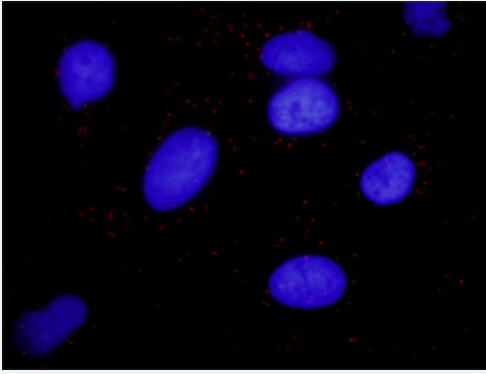
In situ Proximity Ligation Assay (Cell)



In situ Proximity Ligation Assay (Cell)

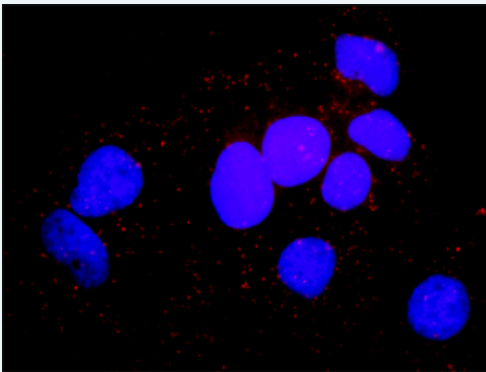


***In situ* Proximity Ligation Assay (Cell)**



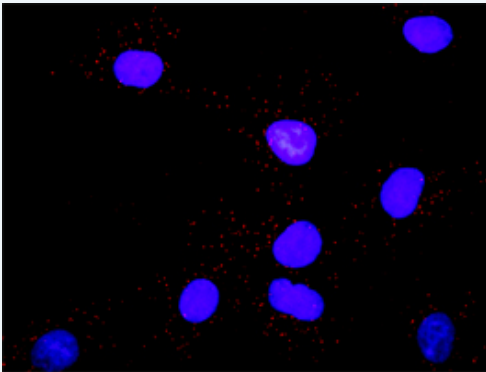
Proximity Ligation Analysis of protein-protein interactions between MAPK3 and ARRB2. HeLa cells were stained with anti-MAPK3 rabbit purified polyclonal 1:1200 and anti-ARRB2 mouse monoclonal antibody 1:50. Each red dot represents the detection of protein-protein interaction complex, and nuclei were counterstained with DAPI (blue).

***In situ* Proximity Ligation Assay (Cell)**



Proximity Ligation Analysis of protein-protein interactions between MAPK3 and MAPK14. Huh7 cells were stained with anti-MAPK3 rabbit purified polyclonal 1:1200 and anti-MAPK14 mouse monoclonal antibody 1:50. Each red dot represents the detection of protein-protein interaction complex, and nuclei were counterstained with DAPI (blue).

***In situ* Proximity Ligation Assay (Cell)**



Proximity Ligation Analysis of protein-protein interactions between MAPK3 and PTPN11. Mahlavu cells were stained with anti-MAPK3 rabbit purified polyclonal 1:1200 and anti-PTPN11 mouse purified polyclonal antibody 1:50. Each red dot represents the detection of protein-protein interaction complex, and nuclei were counterstained with DAPI (blue).

Gene Information

Entrez GeneID: [5595](#)

GeneBank Accession#: [NM_002746.2](#)

Protein Accession#: [AAH13992.1](#)

Gene Name: MAPK3

Gene Alias: ERK1,HS44KDAP,HUMKER1A,MGC20180,P44ERK1,P44MAPK,PRKM3

Gene Description: mitogen-activated protein kinase 3

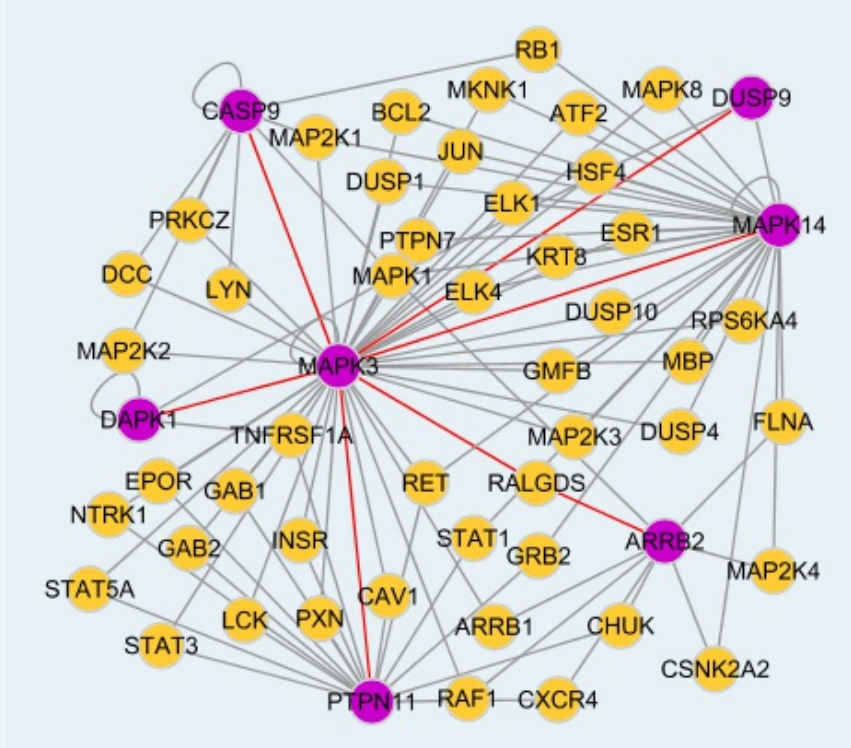
Omim ID: [601795](#)

Gene Ontology: [Hyperlink](#)

Gene Summary: The protein encoded by this gene is a member of the MAP kinase family. MAP kinases, also known as extracellular signal-regulated kinases (ERKs), act in a signaling cascade that regulates various cellular processes such as proliferation, differentiation, and cell cycle progression in response to a variety of extracellular signals. This kinase is activated by upstream kinases, resulting in its translocation to the nucleus where it phosphorylates nuclear targets. Alternatively spliced transcript variants encoding different protein isoforms have been described. [provided by RefSeq]

Other Designations: OTTHUMP00000174538,OTTHUMP00000174540,extracellular signal-regulated kinase 1,extracellular signal-related kinase 1

Interactome



Gene Pathway

[Acute myeloid leukemia](#) [Adherens junction](#) [Alzheimer's disease](#) [Axon guidance](#) [B cell receptor signaling pathway](#) [Bladder cancer](#) [Chemokine signaling pathway](#) [Chronic myeloid leukemia](#) [Colorectal cancer](#) [Dorso-ventral axis formation](#) [Endometrial cancer](#) [ErbB signaling pathway](#) [Fc epsilon RI signaling pathway](#) [Fc gamma R-mediated phagocytosis](#) [Focal adhesion](#) [Gap junction](#) [Glioma](#) [GnRH signaling pathway](#) [Insulin signaling pathway](#) [Long-term depression](#) [Long-term potentiation](#) [MAPK signaling pathway](#) [Melanogenesis](#) [Melanoma](#) [mTOR signaling pathway](#) [Natural killer cell mediated cytotoxicity](#) [Neurotrophin signaling pathway](#) [Non-small cell lung cancer](#) [Pancreatic cancer](#) [Pathways in cancer](#) [Prion diseases](#) [Prostate cancer](#) [Regulation of actin cytoskeleton](#) [Renal cell carcinoma](#) [T cell receptor signaling pathway](#) [TGF-beta signaling pathway](#) [Thyroid cancer](#) [Toll-like receptor signaling pathway](#) [Type II diabetes mellitus](#) [Vascular smooth muscle contraction](#) [VEGF signaling pathway](#)

Related Disease

[服務條款](#) | [隱私權政策](#) | [著作及商標](#) | [網站地圖](#)

©2016 亞諾法生技股份有限公司 Abnova Corporation. 版權所有.