



SZABO SCANDIC

Part of Europa Biosite

Produktinformation



Forschungsprodukte & Biochemikalien



Zellkultur & Verbrauchsmaterial



Diagnostik & molekulare Diagnostik



Laborgeräte & Service

Weitere Information auf den folgenden Seiten!
See the following pages for more information!



Lieferung & Zahlungsart

siehe unsere [Liefer- und Versandbedingungen](#)

Zuschläge

- Mindermengenzuschlag
- Trockeneiszuschlag
- Gefahrgutzuschlag
- Expressversand

SZABO-SCANDIC HandelsgmbH

Quellenstraße 110, A-1100 Wien

T. +43(0)1 489 3961-0

F. +43(0)1 489 3961-7

mail@szabo-scandic.com

www.szabo-scandic.com

[linkedin.com/company/szaboscandic](https://www.linkedin.com/company/szaboscandic) 

MAPK3 monoclonal antibody (M05), clone 3D6

Catalog # : H00005595-M05

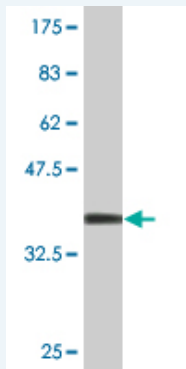
規格 : [100 ug]

List All

Specification

Product Description:	Mouse monoclonal antibody raised against a partial recombinant MAPK3.
Immunogen:	MAPK3 (AAH13992, 279 a.a. ~ 379 a.a) partial recombinant protein with GST tag. MW of the GST tag alone is 26 KDa.
Sequence:	NYLQSLPSKTKVAWAKLFPKSDSKALDLLDRMLTFNPNKRITVEEALHP YLEQYYDPTDEPVAEEPFTFAMELDDLPERLKLKELIFQETARFQPGVLEA P
Host:	Mouse
Reactivity:	Human, Mouse, Rat
Isotype:	IgG2a Kappa

Quality Control Testing: Antibody Reactive Against Recombinant Protein.



Western Blot detection against Immunogen (36.74 KDa) .

Storage Buffer: In 1x PBS, pH 7.4

Storage Instruction: Store at -20°C or lower. Aliquot to avoid repeated freezing and thawing.

MSDS: [Download](#)

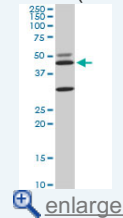
Datasheet: [Download](#)

Applications

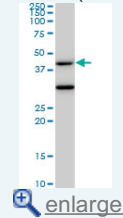
Western Blot (Cell lysate)

Application Image

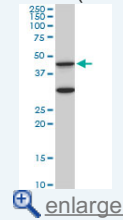
Western Blot (Cell lysate)



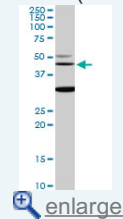
Western Blot (Cell lysate)



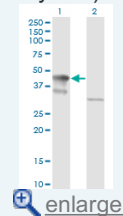
Western Blot (Cell lysate)



Western Blot (Cell lysate)

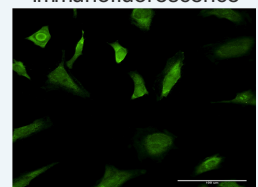


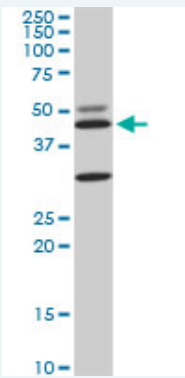
Western Blot (Transfected lysate)



Western Blot (Recombinant protein)

Immunofluorescence

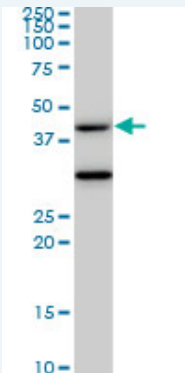




MAPK3 monoclonal antibody (M05), clone 3D6. Western Blot analysis of MAPK3 expression in PC-12(Cat # L012V1).

 [Protocol Download](#)

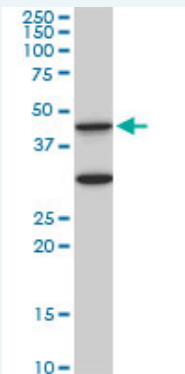
Western Blot (Cell lysate)



MAPK3 monoclonal antibody (M05), clone 3D6. Western Blot analysis of MAPK3 expression in HeLa S3 NE (Cat # L013V3).

 [Protocol Download](#)

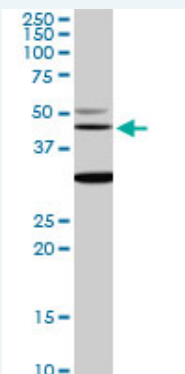
Western Blot (Cell lysate)



MAPK3 monoclonal antibody (M05), clone 3D6. Western Blot analysis of MAPK3 expression in Raw 264.7(Cat # L024V1).

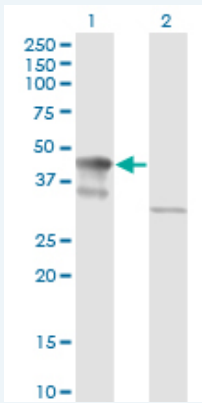
 [Protocol Download](#)

Western Blot (Cell lysate)



MAPK3 monoclonal antibody (M05), clone 3D6. Western Blot analysis of MAPK3 expression in NIH/3T3(Cat # L018V1).

Western Blot (Transfected lysate)



Western Blot analysis of MAPK3 expression in transfected 293T cell line by MAPK3 monoclonal antibody (M05), clone 3D6.

Lane 1: MAPK3 transfected lysate(43.1 KDa).

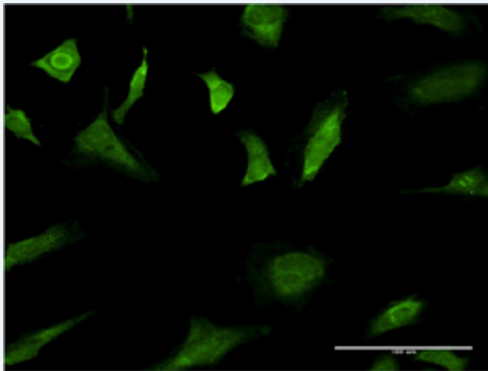
Lane 2: Non-transfected lysate.

 Protocol Download

Western Blot (Recombinant protein)

 Protocol Download

Immunofluorescence



 enlarge this image

Immunofluorescence of monoclonal antibody to MAPK3 on HeLa cell . [antibody concentration 10 ug/ml]

 Protocol Download

ELISA

Gene Information

Entrez GeneID: [5595](#)

GeneBank [BC013992](#)
Accession#:

Protein [AAH13992](#)
Accession#:

Gene Name: MAPK3

Gene Alias: ERK1,HS44KDAP,HUMKER1A,MGC20180,P44ERK1,P44MAPK,PRKM3

Gene Description: mitogen-activated protein kinase 3

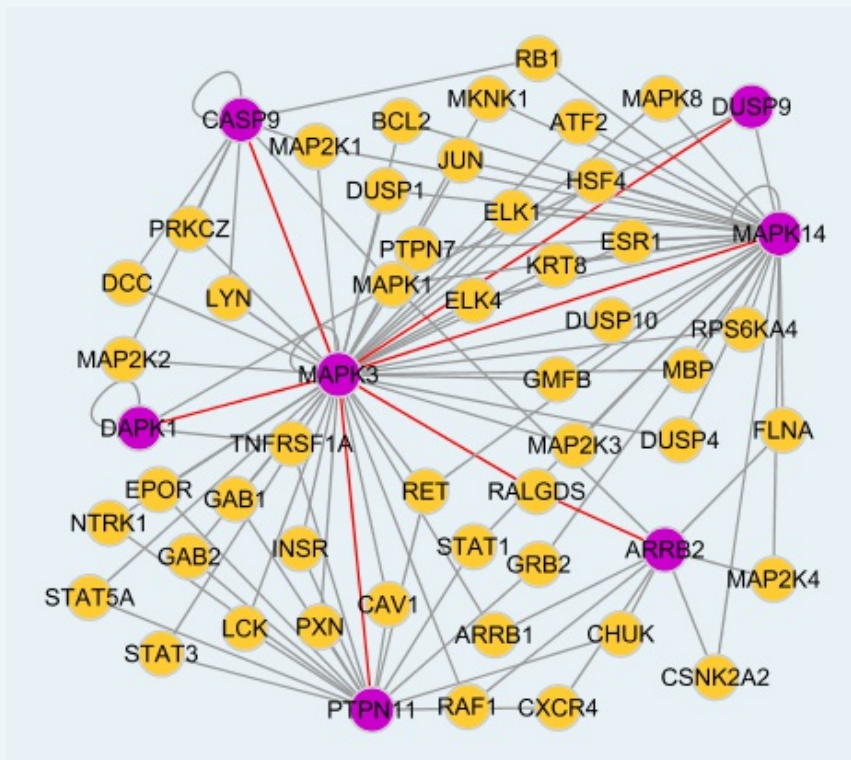
Omim ID: [601795](#)

Gene Ontology: [Hyperlink](#)

Gene Summary: The protein encoded by this gene is a member of the MAP kinase family. MAP kinases, also known as extracellular signal-regulated kinases (ERKs), act in a signaling cascade that regulates various cellular processes such as proliferation, differentiation, and cell cycle progression in response to a variety of extracellular signals. This kinase is activated by upstream kinases, resulting in its translocation to the nucleus where it phosphorylates nuclear targets. Alternatively spliced transcript variants encoding different protein isoforms have been described. [provided by RefSeq]

Other Designations: OTTHUMP00000174538,OTTHUMP00000174540,extracellular signal-regulated kinase 1,extracellular signal-related kinase 1

Interactome



Gene Pathway

[Acute myeloid leukemia](#) [Adherens junction](#) [Alzheimer's disease](#) [Axon guidance](#) [B cell receptor signaling pathway](#) [Bladder cancer](#) [Chemokine signaling pathway](#) [Chronic myeloid leukemia](#) [Colorectal cancer](#) [Dorso-ventral axis formation](#) [Endometrial cancer](#) [ErbB signaling pathway](#) [Fc epsilon RI signaling pathway](#) [Fc gamma R-mediated phagocytosis](#) [Focal adhesion](#) [Gap junction](#) [Glioma](#) [GnRH signaling pathway](#) [Insulin signaling pathway](#) [Long-term depression](#) [Long-term potentiation](#) [MAPK signaling pathway](#) [Melanogenesis](#) [Melanoma](#) [mTOR signaling pathway](#) [Natural killer cell mediated cytotoxicity](#) [Neurotrophin signaling pathway](#) [Non-small cell lung cancer](#) [Pancreatic cancer](#) [Pathways in cancer](#) [Prion diseases](#) [Prostate cancer](#) [Regulation of actin cytoskeleton](#) [Renal cell carcinoma](#) [T cell receptor signaling pathway](#) [TGF-beta signaling pathway](#) [Thyroid cancer](#) [Toll-like receptor signaling pathway](#) [Type II diabetes mellitus](#) [Vascular smooth muscle contraction](#) [VEGF signaling pathway](#)

Related Disease

[Asthma](#) [Asthma](#) [Autistic Disorder](#) [Disease Models, Animal](#) [Genetic Predisposition to Disease](#)