



SZABO SCANDIC

Part of Europa Biosite

Produktinformation



Forschungsprodukte & Biochemikalien



Zellkultur & Verbrauchsmaterial



Diagnostik & molekulare Diagnostik



Laborgeräte & Service

Weitere Information auf den folgenden Seiten!
See the following pages for more information!



Lieferung & Zahlungsart

siehe unsere [Liefer- und Versandbedingungen](#)

Zuschläge

- Mindermengenzuschlag
- Trockeneiszuschlag
- Gefahrgutzuschlag
- Expressversand

SZABO-SCANDIC HandelsgmbH

Quellenstraße 110, A-1100 Wien

T. +43(0)1 489 3961-0

F. +43(0)1 489 3961-7

mail@szabo-scandic.com

www.szabo-scandic.com

[linkedin.com/company/szaboscandic](https://www.linkedin.com/company/szaboscandic) 

MAPK6 monoclonal antibody (M01), clone 1G6

Catalog # : H00005597-M01

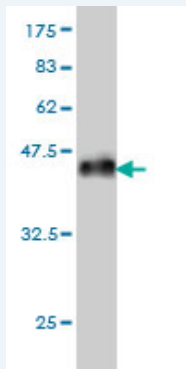
規格 : [100 ug]

[List All](#)

Specification

Product Description:	Mouse monoclonal antibody raised against a partial recombinant MAPK6.
Immunogen:	MAPK6 (AAH35492, 612 a.a. ~ 721 a.a) partial recombinant protein with GST tag. MW of the GST tag alone is 26 KDa.
Sequence:	EVRKDEQVEKENTYTSYLDKFFSRKEDTEMLETEPVEDGKLGGERGHEE GFLNNSGEFLFNKQLESIGIPQFHSPVGSPLKSIQATLTPSAMKSSPQIPH QTYSSILKHLN
Host:	Mouse
Reactivity:	Human
Isotype:	IgG2a Kappa

Quality Control Testing: Antibody Reactive Against Recombinant Protein.



Western Blot detection against Immunogen (37.84 KDa) .

Storage Buffer: In 1x PBS, pH 7.4

Storage Instruction: Store at -20°C or lower. Aliquot to avoid repeated freezing and thawing.

MSDS: [Download](#)

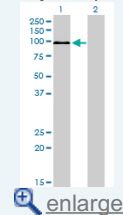
Datasheet: [Download](#)

Applications

Western Blot (Transfected lysate)

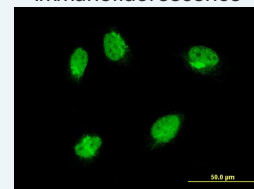
Application Image

Western Blot (Transfected lysate)

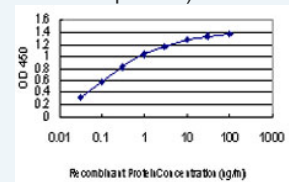


Western Blot (Recombinant protein)

Immunofluorescence



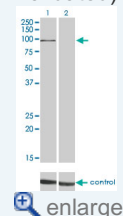
Sandwich ELISA (Recombinant protein)

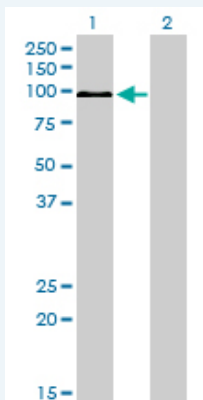


[enlarge](#)

ELISA

RNAi Knockdown (Antibody validated)





Western Blot analysis of MAPK6 expression in transfected 293T cell line by MAPK6 monoclonal antibody (M01), clone 1G6.

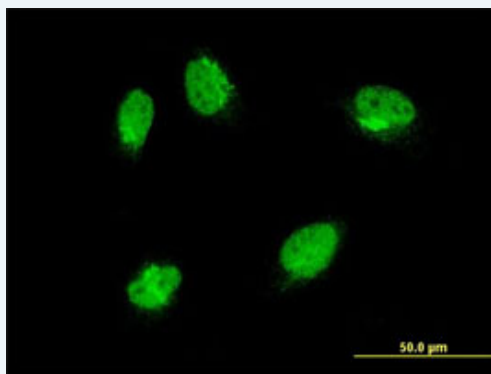
Lane 1: MAPK6 transfected lysate(82.7 KDa).
Lane 2: Non-transfected lysate.

[Protocol Download](#)

Western Blot (Recombinant protein)

[Protocol Download](#)

Immunofluorescence

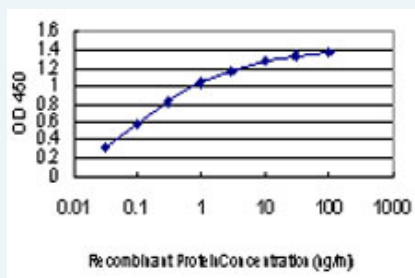


[enlarge this image](#)

Immunofluorescence of monoclonal antibody to MAPK6 on HeLa cell . [antibody concentration 10 ug/ml]

[Protocol Download](#)

Sandwich ELISA (Recombinant protein)

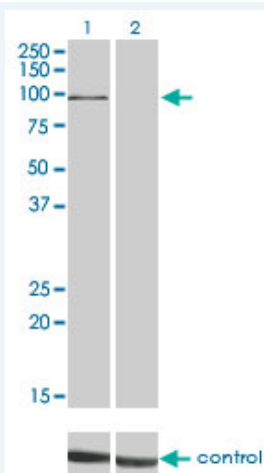


Detection limit for recombinant GST tagged MAPK6 is approximately 0.03ng/ml as a capture antibody.

[Protocol Download](#)

ELISA

RNAi Knockdown (Antibody validated)



Western blot analysis of MAPK6 over-expressed 293 cell line, cotransfected with MAPK6 Validated Chimera RNAi (Cat # H00005597-R01V) (Lane 2) or non-transfected control (Lane 1). Blot probed with MAPK6 monoclonal antibody (M01) clone 1G6 (Cat # H00005597-M01). GAPDH (36.1 kDa) used as specificity and loading control.

 [Protocol Download](#)

Gene Information

Entrez GeneID: [5597](#)

GeneBank [BC035492](#)

Accession#:

Protein [AAH35492](#)

Accession#:

Gene Name: MAPK6

Gene Alias: DKFZp686F03189,ERK3,HsT17250,PRKM6,p97MAPK

Gene mitogen-activated protein kinase 6

Description:

Omim ID: [602904](#)

Gene Ontology: [Hyperlink](#)

Gene Summary: The protein encoded by this gene is a member of the Ser/Thr protein kinase family, and is most closely related to mitogen-activated protein kinases (MAP kinases). MAP kinases also known as extracellular signal-regulated kinases (ERKs), are activated through protein phosphorylation cascades and act as integration points for multiple biochemical signals. This kinase is localized in the nucleus, and has been reported to be activated in fibroblasts upon treatment with serum or phorbol esters. [provided by RefSeq]

Other Designations: MAP kinase isoform p97,extracellular signal-regulated kinase 3,extracellular signal-regulated kinase, p97,protein kinase, mitogen-activated 5,protein kinase, mitogen-activated 6

Gene Pathway

[MAPK signaling pathway](#)