



SZABO SCANDIC

Part of Europa Biosite

Produktinformation



Forschungsprodukte & Biochemikalien



Zellkultur & Verbrauchsmaterial



Diagnostik & molekulare Diagnostik



Laborgeräte & Service

Weitere Information auf den folgenden Seiten!
See the following pages for more information!



Lieferung & Zahlungsart

siehe unsere [Liefer- und Versandbedingungen](#)

Zuschläge

- Mindermengenzuschlag
- Trockeneiszuschlag
- Gefahrgutzuschlag
- Expressversand

SZABO-SCANDIC HandelsgmbH

Quellenstraße 110, A-1100 Wien

T. +43(0)1 489 3961-0

F. +43(0)1 489 3961-7

mail@szabo-scandic.com

www.szabo-scandic.com

[linkedin.com/company/szaboscandic](https://www.linkedin.com/company/szaboscandic) 

MAPK8 monoclonal antibody (M08), clone 1E2

Catalog # : H00005599-M08

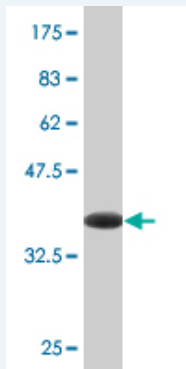
規格 : [100 ug]

[List All](#)

Specification

Product Description:	Mouse monoclonal antibody raised against a partial recombinant MAPK8.
Immunogen:	MAPK8 (NP_620637, 318 a.a. ~ 427 a.a) partial recombinant protein with GST tag. MW of the GST tag alone is 26 KDa.
Sequence:	HPYINWVYDPSEAEAPPPKIPDKQLDEREHTIEEWKELIYKEVMDLEERTK NGVIRGQPSPLGAAVINGSQHPSSSSSVNDVSSMSTDPTLASDPTDSSLEA AAGPLGCCR
Host:	Mouse
Reactivity:	Human
Isotype:	IgG2b Kappa

Quality Control Testing: Antibody Reactive Against Recombinant Protein.



Western Blot detection against Immunogen (38.21 KDa) .

Storage Buffer: In 1x PBS, pH 7.4

Storage Instruction: Store at -20°C or lower. Aliquot to avoid repeated freezing and thawing.

MSDS: [Download](#)

Datasheet: [Download](#)

Applications

Western Blot (Recombinant protein)

[Protocol Download](#)

ELISA

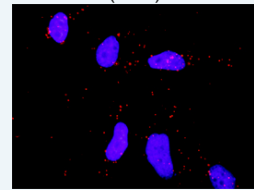
***In situ* Proximity Ligation Assay (Cell)**

Application Image

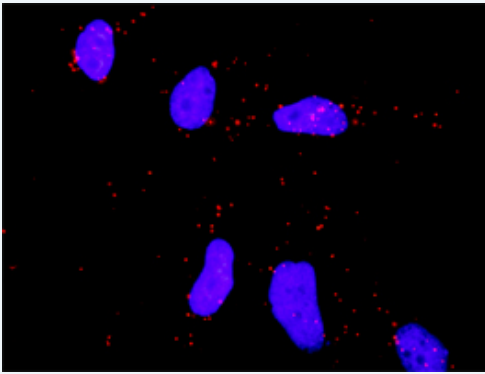
Western Blot (Recombinant protein)

ELISA

In situ Proximity Ligation Assay (Cell)



[enlarge](#)



Proximity Ligation Analysis of protein-protein interactions between CDC42 and MAPK8. HeLa cells were stained with anti-CDC42 rabbit purified polyclonal 1:1200 and anti-MAPK8 mouse monoclonal antibody 1:50. Each red dot represents the detection of protein-protein interaction complex, and nuclei were counterstained with DAPI (blue).

Gene Information

Entrez GeneID: [5599](#)

GeneBank Accession#: [NM_139049](#)

Protein Accession#: [NP_620637](#)

Gene Name: MAPK8

Gene Alias: JNK,JNK1,JNK1A2,JNK21B1/2,PRKM8,SAPK1

Gene Description: mitogen-activated protein kinase 8

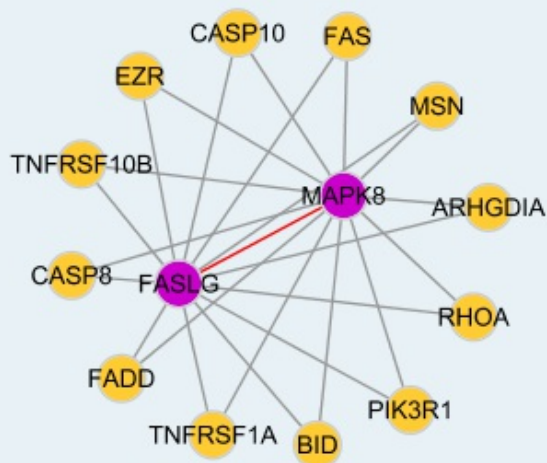
Omim ID: [601158](#)

Gene Ontology: [Hyperlink](#)

Gene Summary: The protein encoded by this gene is a member of the MAP kinase family. MAP kinases act as an integration point for multiple biochemical signals, and are involved in a wide variety of cellular processes such as proliferation, differentiation, transcription regulation and development. This kinase is activated by various cell stimuli, and targets specific transcription factors, and thus mediates immediate-early gene expression in response to cell stimuli. The activation of this kinase by tumor-necrosis factor alpha (TNF-alpha) is found to be required for TNF-alpha induced apoptosis. This kinase is also involved in UV radiation induced apoptosis, which is thought to be related to cytochrom c-mediated cell death pathway. Studies of the mouse counterpart of this gene suggested that this kinase play a key role in T cell proliferation, apoptosis and differentiation. Four alternatively spliced transcript variants encoding distinct isoforms have been reported. [provided by RefSeq]

Other Designations: JNK1 alpha protein kinase,JNK1 beta protein kinase,JUN N-terminal kinase,OTTHUMP00000019552,OTTHUMP00000019555,OTTHUMP00000019556,OTTHUMP00000019558,c-Jun N-terminal kinase 1,mitogen-activated protein kinase 8 isoform JNK1 alpha1,mitogen-activated protein

Interactome



Gene Pathway

[Adipocytokine signaling pathway](#)
[Colorectal cancer](#)
[Epithelial cell signaling in Helicobacter pylori infection](#)
[ErbB signaling pathway](#)
[Fc epsilon RI signaling pathway](#)
[Focal adhesion](#)
[GnRH signaling pathway](#)
[Insulin signaling pathway](#)
[MAPK signaling pathway](#)
[Neurotrophin signaling pathway](#)
[Pancreatic cancer](#)
[Pathways in cancer](#)
[Toll-like receptor signaling pathway](#)
[Type II diabetes mellitus](#)
[Wnt signaling pathway](#)

Related Disease

[Breast cancer](#)
[Breast Neoplasms](#)
[Cardiovascular Diseases](#)
[Diabetes Mellitus, Type 2](#)
[Edema](#)
[Genetic Predisposition to Disease](#)
[HIV Infections](#)

服務條款 | 隱私權政策 | 著作及商標 | 網站地圖

©2016 亞諾法生技股份有限公司 Abnova Corporation. 版權所有.