



# SZABO SCANDIC

Part of Europa Biosite

## Produktinformation



Forschungsprodukte & Biochemikalien



Zellkultur & Verbrauchsmaterial



Diagnostik & molekulare Diagnostik



Laborgeräte & Service

Weitere Information auf den folgenden Seiten!  
See the following pages for more information!



### Lieferung & Zahlungsart

siehe unsere [Liefer- und Versandbedingungen](#)

### Zuschläge

- Mindermengenzuschlag
- Trockeneiszuschlag
- Gefahrgutzuschlag
- Expressversand

### SZABO-SCANDIC HandelsgmbH

Quellenstraße 110, A-1100 Wien

T. +43(0)1 489 3961-0

F. +43(0)1 489 3961-7

[mail@szabo-scandic.com](mailto:mail@szabo-scandic.com)

[www.szabo-scandic.com](http://www.szabo-scandic.com)

[linkedin.com/company/szaboscandic](https://www.linkedin.com/company/szaboscandic) 

## MAPK8 monoclonal antibody (M10), clone 3F7

Catalog # : H00005599-M10

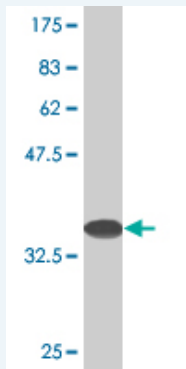
規格 : [ 100 ug ]

[List All](#)

### Specification

<b>Product Description:</b>	Mouse monoclonal antibody raised against a partial recombinant MAPK8.
<b>Immunogen:</b>	MAPK8 (NP_620637, 318 a.a. ~ 427 a.a) partial recombinant protein with GST tag. MW of the GST tag alone is 26 KDa.
<b>Sequence:</b>	HPYINWVYDPSEAEAPPPKIPDKQLDEREHTIEEWKELIYKEVMDLEERTK NGVIRGQPSPLGAAVINGSQHPSSSSSVNDVSSMSTDPTLASD TDSSLEA AAGPLGCCR
<b>Host:</b>	Mouse
<b>Reactivity:</b>	Human
<b>Isotype:</b>	IgG2a Kappa

**Quality Control Testing:** Antibody Reactive Against Recombinant Protein.



Western Blot detection against Immunogen (38.21 KDa) .

**Storage Buffer:** In 1x PBS, pH 7.4

**Storage Instruction:** Store at -20°C or lower. Aliquot to avoid repeated freezing and thawing.

**MSDS:** [Download](#)

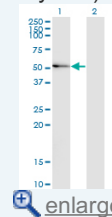
**Datasheet:** [Download](#)

### Applications

Western Blot (Transfected lysate)

### Application Image

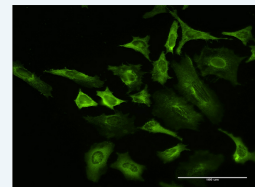
Western Blot (Transfected lysate)



[enlarge](#)

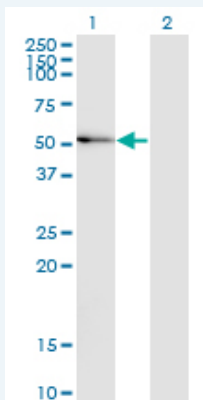
Western Blot (Recombinant protein)

Immunofluorescence



[enlarge](#)

ELISA



Western Blot analysis of MAPK8 expression in transfected 293T cell line by MAPK8 monoclonal antibody (M10), clone 3F7.

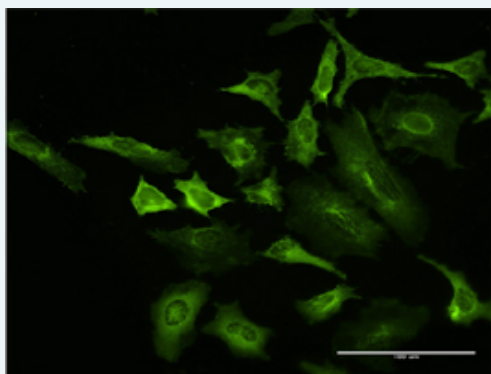
Lane 1: MAPK8 transfected lysate(48.3 KDa).  
Lane 2: Non-transfected lysate.

[Protocol Download](#)

### Western Blot (Recombinant protein)

[Protocol Download](#)

### Immunofluorescence



[enlarge this image](#)

Immunofluorescence of monoclonal antibody to MAPK8 on HeLa cell . [antibody concentration 10 ug/ml]

[Protocol Download](#)

### ELISA

### Gene Information

Entrez GeneID: [5599](#)

GeneBank [NM\\_139049](#)  
Accession#:

Protein [NP\\_620637](#)  
Accession#:

Gene Name: MAPK8

Gene Alias: JNK,JNK1,JNK1A2,JNK21B1/2,PRKM8,SAPK1

Gene Description: mitogen-activated protein kinase 8

Omim ID: [601158](#)

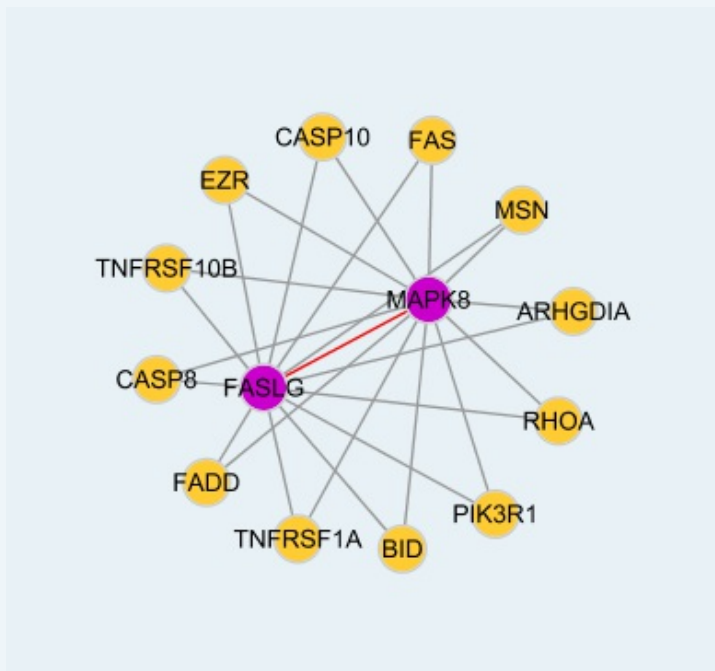
Gene Ontology: [Hyperlink](#)

Gene Summary: The protein encoded by this gene is a member of the MAP kinase family. MAP kinases act as an integration point for multiple biochemical

signals, and are involved in a wide variety of cellular processes such as proliferation, differentiation, transcription regulation and development. This kinase is activated by various cell stimuli, and targets specific transcription factors, and thus mediates immediate-early gene expression in response to cell stimuli. The activation of this kinase by tumor-necrosis factor alpha (TNF-alpha) is found to be required for TNF-alpha induced apoptosis. This kinase is also involved in UV radiation induced apoptosis, which is thought to be related to cytochrom c-mediated cell death pathway. Studies of the mouse counterpart of this gene suggested that this kinase play a key role in T cell proliferation, apoptosis and differentiation. Four alternatively spliced transcript variants encoding distinct isoforms have been reported. [provided by RefSeq]

**Other Designations:** JNK1 alpha protein kinase, JNK1 beta protein kinase, JUN N-terminal kinase, OTTHUMP00000019552, OTTHUMP00000019555, OTTHUMP00000019556, OTTHUMP00000019558, c-Jun N-terminal kinase 1, mitogen-activated protein kinase 8 isoform JNK1 alpha1, mitogen-activated protein

### Interactome



### Gene Pathway

[Adipocytokine signaling pathway](#) [Colorectal cancer](#)  
[Epithelial cell signaling in Helicobacter pylori infection](#) [ErbB signaling pathway](#)  
[Fc epsilon RI signaling pathway](#) [Focal adhesion](#) [GnRH signaling pathway](#)  
[Insulin signaling pathway](#) [MAPK signaling pathway](#) [Neurotrophin signaling pathway](#)  
[Pancreatic cancer](#) [Pathways in cancer](#) [Toll-like receptor signaling pathway](#)  
[Type II diabetes mellitus](#) [Wnt signaling pathway](#)

### Related Disease

[Breast cancer](#) [Breast Neoplasms](#) [Cardiovascular Diseases](#) [Diabetes Mellitus, Type 2](#)  
[Edema](#) [Genetic Predisposition to Disease](#) [HIV Infections](#)