



SZABO SCANDIC

Part of Europa Biosite

Produktinformation



Forschungsprodukte & Biochemikalien



Zellkultur & Verbrauchsmaterial



Diagnostik & molekulare Diagnostik



Laborgeräte & Service

Weitere Information auf den folgenden Seiten!
See the following pages for more information!



Lieferung & Zahlungsart

siehe unsere [Liefer- und Versandbedingungen](#)

Zuschläge

- Mindermengenzuschlag
- Trockeneiszuschlag
- Gefahrgutzuschlag
- Expressversand

SZABO-SCANDIC HandelsgmbH

Quellenstraße 110, A-1100 Wien

T. +43(0)1 489 3961-0

F. +43(0)1 489 3961-7

mail@szabo-scandic.com

www.szabo-scandic.com

[linkedin.com/company/szaboscandic](https://www.linkedin.com/company/szaboscandic) 

MAPK8 monoclonal antibody (M11), clone 2F11

Catalog # : H00005599-M11

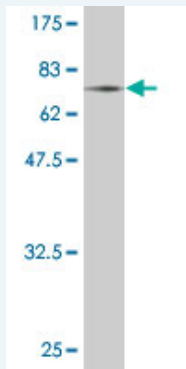
規格 : [100 ug]

[List All](#)

Specification

| | |
|-----------------------------|--|
| Product Description: | Mouse monoclonal antibody raised against a full length recombinant MAPK8. |
| Immunogen: | MAPK8 (NP_002741.1, 1 a.a. ~ 384 a.a) full-length recombinant protein with GST tag. MW of the GST tag alone is 26 KDa. |
| Sequence: | MSRSKRDNNFYVSVEIGDSTFTVLKRYQNLKPIGSGAQGIVCAAYDAILER NVAIKKLSRPFQNTAKRAYRELVLKMCVNHKNIIGLLNVFTPQKSLEEF QDVYVIMELMDANLCQVIQMELDHERMSYLLYQMLCGIKHLHSAGIIHRDL KPSNIVKSDCTLKILDFGLARTAGTSFMMTPYVVTRYRAPEVILGMGY KENVDLWSVGCIMGEMVCHKILFPGRDYIDQWNKIEQLGTPCEPFMKK LQPTVRTYVENRPKYAGYSFEKLPDVLFPADSEHNKLGKASQARDLLSK MLVIDASKRISVDEALQHPYINWYDPSEAEAPPKIPDKQLDEREHTIEE WKELIYKEVMDLEERTKNGVIRGQPSPLAQVQQ |
| Host: | Mouse |
| Reactivity: | Human |
| Isotype: | IgG2a Kappa |

Quality Control Testing: Antibody Reactive Against Recombinant Protein.



Western Blot detection against Immunogen (67.87 KDa) .

Storage Buffer: In 1x PBS, pH 7.4

Storage Instruction: Store at -20°C or lower. Aliquot to avoid repeated freezing and thawing.

MSDS: [Download](#)

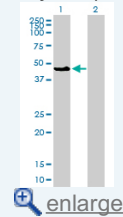
Datasheet: [Download](#)

Applications

Western Blot (Transfected lysate)

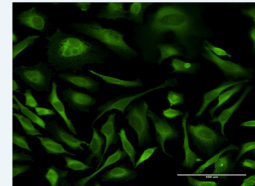
Application Image

Western Blot (Transfected lysate)

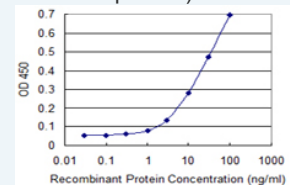


Western Blot (Recombinant protein)

Immunofluorescence

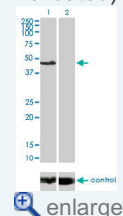


Sandwich ELISA (Recombinant protein)

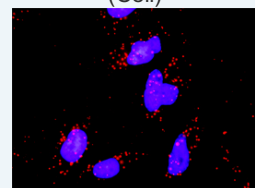


ELISA

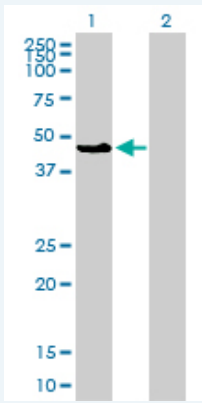
RNAi Knockdown (Antibody validated)



In situ Proximity Ligation Assay (Cell)



In situ Proximity Ligation Assay (Cell)



Western Blot analysis of MAPK8 expression in transfected 293T cell line by MAPK8 monoclonal antibody (M11), clone 2F11.

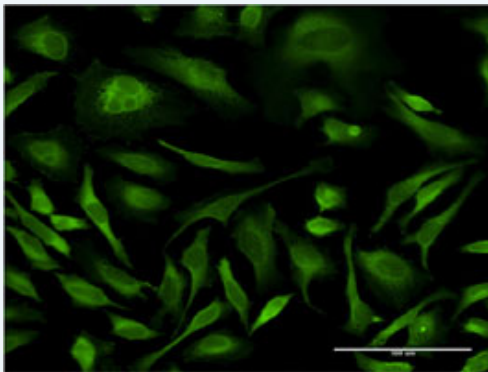
Lane 1: MAPK8 transfected lysate(48.3 KDa).
Lane 2: Non-transfected lysate.

[Protocol Download](#)

Western Blot (Recombinant protein)

[Protocol Download](#)

Immunofluorescence

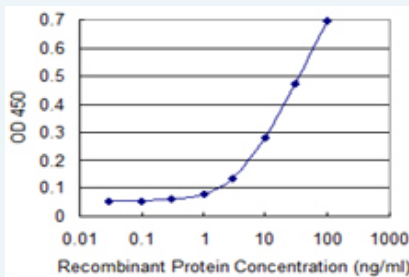


[enlarge this image](#)

Immunofluorescence of monoclonal antibody to MAPK8 on HeLa cell . [antibody concentration 10 ug/ml]

[Protocol Download](#)

Sandwich ELISA (Recombinant protein)

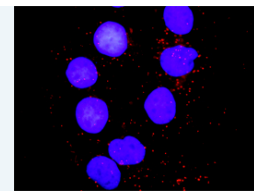


Detection limit for recombinant GST tagged MAPK8 is 1 ng/ml as a capture antibody.

[Protocol Download](#)

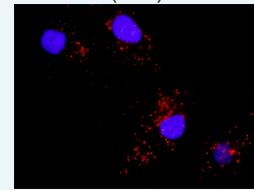
ELISA

RNAi Knockdown (Antibody validated)

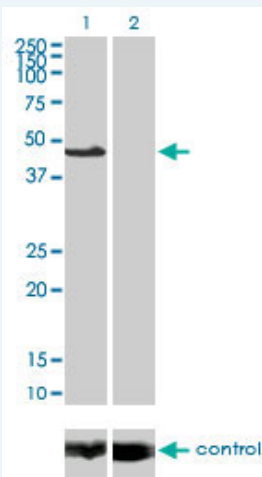


[enlarge](#)

In situ Proximity Ligation Assay (Cell)



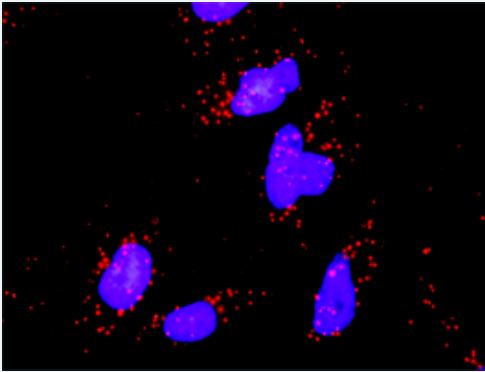
[enlarge](#)



Western blot analysis of MAPK8 over-expressed 293 cell line, cotransfected with MAPK8 Validated Chimera RNAi (Cat # H00005599-R01V) (Lane 2) or non-transfected control (Lane 1). Blot probed with MAPK8 monoclonal antibody (M11) clone 2F11 (Cat # H00005599-M11). GAPDH (36.1 kDa) used as specificity and loading control.

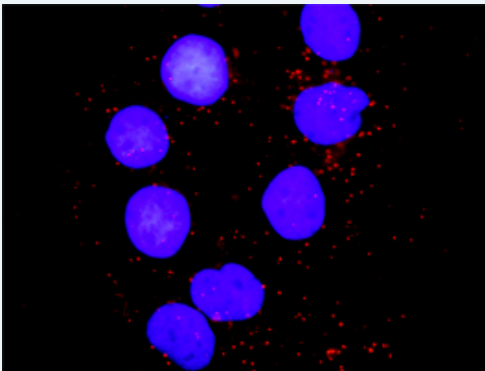
 [Protocol Download](#)

***In situ* Proximity Ligation Assay (Cell)**



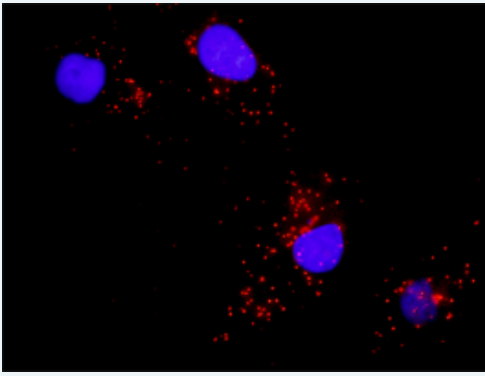
Proximity Ligation Analysis of protein-protein interactions between CRK and MAPK8. HeLa cells were stained with anti-CRK rabbit purified polyclonal 1:1200 and anti-MAPK8 mouse monoclonal antibody 1:50. Each red dot represents the detection of protein-protein interaction complex, and nuclei were counterstained with DAPI (blue).

***In situ* Proximity Ligation Assay (Cell)**



Proximity Ligation Analysis of protein-protein interactions between PXN and MAPK8. Huh7 cells were stained with anti-PXN rabbit purified polyclonal 1:1200 and anti-MAPK8 mouse monoclonal antibody 1:50. Each red dot represents the detection of protein-protein interaction complex, and nuclei were counterstained with DAPI (blue).

***In situ* Proximity Ligation Assay (Cell)**



Proximity Ligation Analysis of protein-protein interactions between BAD and MAPK8. Mahlavu cells were stained with anti-BAD rabbit purified polyclonal 1:1200 and anti-MAPK8 mouse monoclonal antibody 1:50. Each red dot represents the detection of protein-protein interaction complex, and nuclei were counterstained with DAPI (blue).

Gene Information

Entrez GeneID: [5599](#)

GeneBank Accession#: [NM_002750.1](#)

Protein Accession#: [NP_002741.1](#)

Gene Name: MAPK8

Gene Alias: JNK,JNK1,JNK1A2,JNK21B1/2,PRKM8,SAPK1

Gene Description: mitogen-activated protein kinase 8

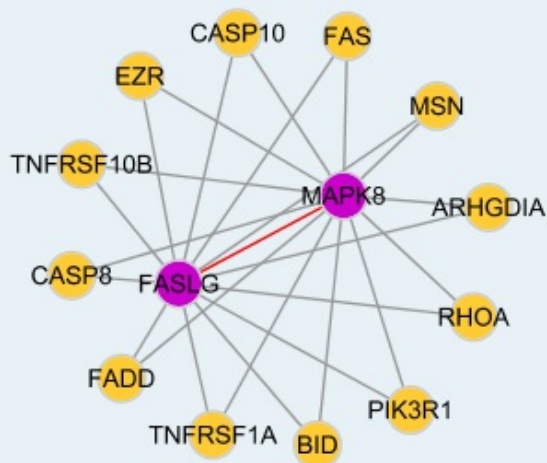
Omim ID: [601158](#)

Gene Ontology: [Hyperlink](#)

Gene Summary: The protein encoded by this gene is a member of the MAP kinase family. MAP kinases act as an integration point for multiple biochemical signals, and are involved in a wide variety of cellular processes such as proliferation, differentiation, transcription regulation and development. This kinase is activated by various cell stimuli, and targets specific transcription factors, and thus mediates immediate-early gene expression in response to cell stimuli. The activation of this kinase by tumor-necrosis factor alpha (TNF-alpha) is found to be required for TNF-alpha induced apoptosis. This kinase is also involved in UV radiation induced apoptosis, which is thought to be related to cytochrom c-mediated cell death pathway. Studies of the mouse counterpart of this gene suggested that this kinase play a key role in T cell proliferation, apoptosis and differentiation. Four alternatively spliced transcript variants encoding distinct isoforms have been reported. [provided by RefSeq]

Other Designations: JNK1 alpha protein kinase,JNK1 beta protein kinase,JUN N-terminal kinase,OTTHUMP00000019552,OTTHUMP00000019555,OTTHUMP00000019556,OTTHUMP00000019558,c-Jun N-terminal kinase 1,mitogen-activated protein kinase 8 isoform JNK1 alpha1,mitogen-activated protein

Interactome



Gene Pathway

[Adipocytokine signaling pathway](#)
[Colorectal cancer](#)
[Epithelial cell signaling in Helicobacter pylori infection](#)
[ErbB signaling pathway](#)
[Fc epsilon RI signaling pathway](#)
[Focal adhesion](#)
[GnRH signaling pathway](#)
[Insulin signaling pathway](#)
[MAPK signaling pathway](#)
[Neurotrophin signaling pathway](#)
[Pancreatic cancer](#)
[Pathways in cancer](#)
[Toll-like receptor signaling pathway](#)
[Type II diabetes mellitus](#)
[Wnt signaling pathway](#)

Related Disease

[Breast cancer](#)
[Breast Neoplasms](#)
[Cardiovascular Diseases](#)
[Diabetes Mellitus, Type 2](#)
[Edema](#)
[Genetic Predisposition to Disease](#)
[HIV Infections](#)

服務條款 | 隱私權政策 | 著作及商標 | 網站地圖

©2016 亞諾法生技股份有限公司 Abnova Corporation. 版權所有.