



# SZABO SCANDIC

Part of Europa Biosite

## Produktinformation



Forschungsprodukte & Biochemikalien



Zellkultur & Verbrauchsmaterial



Diagnostik & molekulare Diagnostik



Laborgeräte & Service

Weitere Information auf den folgenden Seiten!  
See the following pages for more information!



### Lieferung & Zahlungsart

siehe unsere [Liefer- und Versandbedingungen](#)

### Zuschläge

- Mindermengenzuschlag
- Trockeneiszuschlag
- Gefahrgutzuschlag
- Expressversand

### SZABO-SCANDIC HandelsgmbH

Quellenstraße 110, A-1100 Wien

T. +43(0)1 489 3961-0

F. +43(0)1 489 3961-7

[mail@szabo-scandic.com](mailto:mail@szabo-scandic.com)

[www.szabo-scandic.com](http://www.szabo-scandic.com)

[linkedin.com/company/szaboscandic](https://www.linkedin.com/company/szaboscandic) 

## MAPK8 (Human) IP-WB Antibody Pair

Catalog # : H00005599-PW4

規格 : [ 1 Set ]

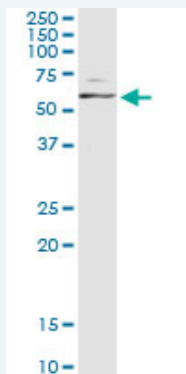
[List All](#)

### Specification

**Product Description:** This IP-WB antibody pair set comes with one antibody for immunoprecipitation and another to detect the precipitated protein in western blot.

**Reactivity:** Human

**Quality Control Testing:** Immunoprecipitation-Western Blot (IP-WB)



Immunoprecipitation of MAPK8 transfected lysate using mouse monoclonal anti-MAPK8 and Protein A Magnetic Bead ([U0007](#)), and immunoblotted with rabbit polyclonal anti-MAPK8.

**Supplied Product:** Antibody pair set content:  
1. Antibody pair for IP: mouse monoclonal anti-MAPK8 (300 ug)  
2. Antibody pair for WB: rabbit polyclonal anti-MAPK8 (50 ul)

**Storage Instruction:** Store reagents of the antibody pair set at -20°C or lower. Please aliquot to avoid repeated freeze thaw cycle. Reagents should be returned to -20°C storage immediately after use.

**MSDS:**  [Download](#)

### Applications

**Immunoprecipitation-Western Blot**

 [Protocol Download](#)

### Gene Information

**Entrez GeneID:** [5599](#)

**Gene Name:** MAPK8

**Gene Alias:** JNK, JNK1, JNK1A2, JNK21B1/2, PRKM8, SAPK1

**Gene Description:** mitogen-activated protein kinase 8

**Omim ID:** [601158](#)

**Gene Ontology:** [Hyperlink](#)

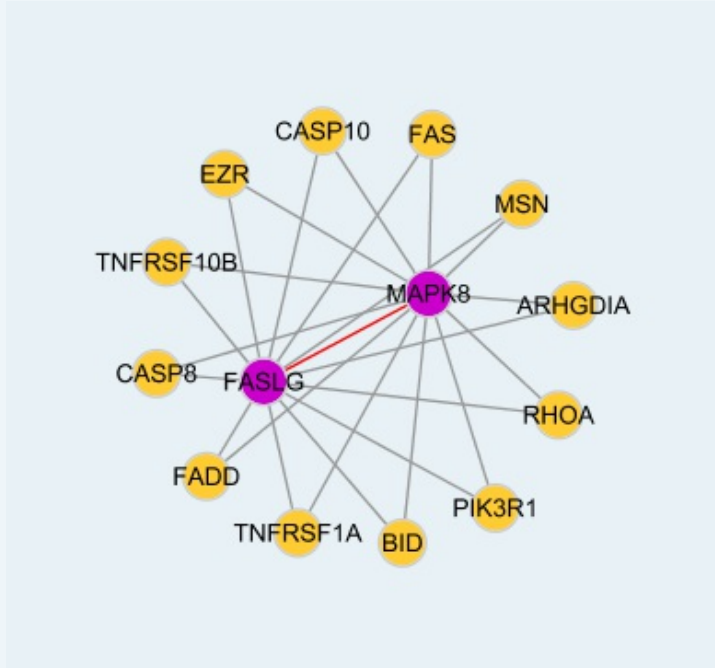
### Application Image

Immunoprecipitation-Western Blot

**Gene Summary:** The protein encoded by this gene is a member of the MAP kinase family. MAP kinases act as an integration point for multiple biochemical signals, and are involved in a wide variety of cellular processes such as proliferation, differentiation, transcription regulation and development. This kinase is activated by various cell stimuli, and targets specific transcription factors, and thus mediates immediate-early gene expression in response to cell stimuli. The activation of this kinase by tumor-necrosis factor alpha (TNF-alpha) is found to be required for TNF-alpha induced apoptosis. This kinase is also involved in UV radiation induced apoptosis, which is thought to be related to cytochrom c-mediated cell death pathway. Studies of the mouse counterpart of this gene suggested that this kinase play a key role in T cell proliferation, apoptosis and differentiation. Four alternatively spliced transcript variants encoding distinct isoforms have been reported. [provided by RefSeq]

**Other Designations:** JNK1 alpha protein kinase, JNK1 beta protein kinase, JUN N-terminal kinase, OTTHUMP00000019552, OTTHUMP00000019555, OTTHUMP00000019556, OTTHUMP00000019558, c-Jun N-terminal kinase 1, mitogen-activated protein kinase 8 isoform JNK1 alpha1, mitogen-activated protein

### Interactome



### Gene Pathway

[Adipocytokine signaling pathway](#) [Colorectal cancer](#)  
[Epithelial cell signaling in Helicobacter pylori infection](#) [ErbB signaling pathway](#)  
[Fc epsilon RI signaling pathway](#) [Focal adhesion](#) [GnRH signaling pathway](#)  
[Insulin signaling pathway](#) [MAPK signaling pathway](#) [Neurotrophin signaling pathway](#)  
[Pancreatic cancer](#) [Pathways in cancer](#) [Toll-like receptor signaling pathway](#)  
[Type II diabetes mellitus](#) [Wnt signaling pathway](#)

### Related Disease

[Breast cancer](#) [Breast Neoplasms](#) [Cardiovascular Diseases](#) [Diabetes Mellitus, Type 2](#)  
[Edema](#) [Genetic Predisposition to Disease](#) [HIV Infections](#)