



SZABO SCANDIC

Part of Europa Biosite

Produktinformation



Forschungsprodukte & Biochemikalien



Zellkultur & Verbrauchsmaterial



Diagnostik & molekulare Diagnostik



Laborgeräte & Service

Weitere Information auf den folgenden Seiten!
See the following pages for more information!



Lieferung & Zahlungsart

siehe unsere [Liefer- und Versandbedingungen](#)

Zuschläge

- Mindermengenzuschlag
- Trockeneiszuschlag
- Gefahrgutzuschlag
- Expressversand

SZABO-SCANDIC HandelsgmbH

Quellenstraße 110, A-1100 Wien

T. +43(0)1 489 3961-0

F. +43(0)1 489 3961-7

mail@szabo-scandic.com

www.szabo-scandic.com

[linkedin.com/company/szaboscandic](https://www.linkedin.com/company/szaboscandic) 

MAPK11 MaxPab mouse polyclonal antibody (B01) MaxPab®

Catalog # : H00005600-B01

規格 : [50 uL]

[List All](#)

Specification

Product Description: Mouse polyclonal antibody raised against a full-length human MAPK11 protein.

Immunogen: MAPK11 (NP_002742.3, 1 a.a. ~ 364 a.a) full-length human protein.

Sequence:
 MSGPRAGFYRQELNKTWVEPQRLQGLRPVGSAYDARLR
 QKVAVKKLSRPFQSLIHARRTYRELRLLKHLKHENVIGLLDVFTPATSIED
 FSEVYLVTTLMGADLNNIVKQALSDEHVQFLVYQLLRGLKYIHSAGIIHR
 DLKPSNVAVNEDCELRLDFGLARQADEEMTGYVATRWYRAPEIMLNWM
 HYNQTVDIWSVGCIMAELLQGKALFPGSDYIDQLKRIMEVVGTPSPEVLA
 KISSEHARTYIQSLPPMPQKDLSSIFRGANPLAIDLGRMLVLDSDQRVSA
 AEALAHAYFSQYHDPEDPEAPEPYDESVEAKERTLEEWKELTYQEVLSF
 KPPEPPKPPGSLEIEQ

Host: Mouse

Reactivity: Human

Quality Control Testing: Antibody reactive against mammalian transfected lysate.

Storage Buffer: No additive

Storage Instruction: Store at -20°C or lower. Aliquot to avoid repeated freezing and thawing.

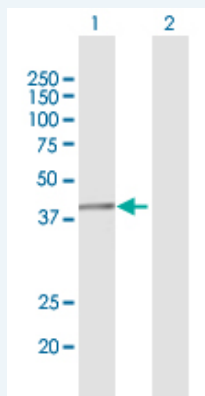
Note: For IHC and IF applications, antibody purification with Protein A will be needed prior to use.

MSDS: [Download](#)

Datasheet: [Download](#)

Applications

Western Blot (Transfected lysate)

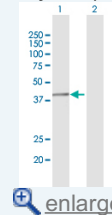


Western Blot analysis of MAPK11 expression in transfected 293T cell line (H00005600-T01) by MAPK11 MaxPab polyclonal antibody.

Lane 1: MAPK11 transfected lysate(40.04 KDa).

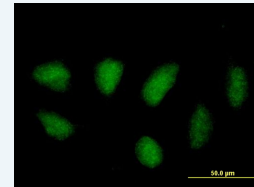
Application Image

Western Blot (Transfected lysate)

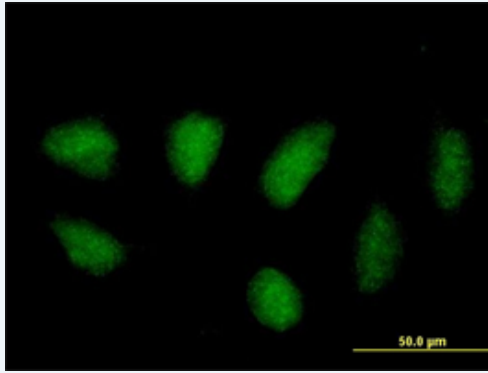


[enlarge](#)

Immunofluorescence



[enlarge](#)

Immunofluorescence
 enlarge this image

Immunofluorescence of purified MaxPab antibody to MAPK11 on HeLa cell. [antibody concentration 10 ug/ml]

Gene Information

Entrez GeneID: [5600](#)

GeneBank Accession#: [NM_002751.5](#)

Protein Accession#: [NP_002742.3](#)

Gene Name: MAPK11

Gene Alias: P38B,P38BETA2,PRKM11,SAPK2,SAPK2B,p38-2,p38Beta

Gene Description: mitogen-activated protein kinase 11

Omim ID: [602898](#)

Gene Ontology: [Hyperlink](#)

Gene Summary: The protein encoded by this gene is a member of the MAP kinase family. MAP kinases act as an integration point for multiple biochemical signals, and are involved in a wide variety of cellular processes such as proliferation, differentiation, transcription regulation, and development. This kinase is most closely related to p38 MAP kinase, both of which can be activated by proinflammatory cytokines and environmental stress. This kinase is activated through its phosphorylation by MAP kinase kinases (MKKs), preferably by MKK6. Transcription factor ATF2/CREB2 has been shown to be a substrate of this kinase. [provided by RefSeq]

Other Designations: OTTHUMP00000196655,mitogen-activated protein kinase p38 beta,mitogen-activated protein kinase p38-2,stress-activated protein kinase-2,stress-activated protein kinase-2b

Gene Pathway

[Amyotrophic lateral sclerosis \(ALS\)](#) [Epithelial cell signaling in Helicobacter pylori infection](#)
[Fc epsilon RI signaling pathway](#) [GnRH signaling pathway](#)
[Leukocyte transendothelial migration](#) [MAPK signaling pathway](#)
[Neurotrophin signaling pathway](#) [T cell receptor signaling pathway](#)
[Toll-like receptor signaling pathway](#) [VEGF signaling pathway](#)

Related Disease

[Cardiovascular Diseases](#) [Diabetes Mellitus, Type 2](#) [Edema](#) [HIV Infections](#)

[服務條款](#) | [隱私權政策](#) | [著作及商標](#) | [網站地圖](#)

©2016 亞諾法生技股份有限公司 Abnova Corporation. 版權所有.