



SZABO SCANDIC

Part of Europa Biosite

Produktinformation



Forschungsprodukte & Biochemikalien



Zellkultur & Verbrauchsmaterial



Diagnostik & molekulare Diagnostik



Laborgeräte & Service

Weitere Information auf den folgenden Seiten!
See the following pages for more information!



Lieferung & Zahlungsart

siehe unsere [Liefer- und Versandbedingungen](#)

Zuschläge

- Mindermengenzuschlag
- Trockeneiszuschlag
- Gefahrgutzuschlag
- Expressversand

SZABO-SCANDIC HandelsgmbH

Quellenstraße 110, A-1100 Wien

T. +43(0)1 489 3961-0

F. +43(0)1 489 3961-7

mail@szabo-scandic.com

www.szabo-scandic.com

[linkedin.com/company/szaboscandic](https://www.linkedin.com/company/szaboscandic) 

MAPK11 purified MaxPab rabbit polyclonal antibody (D01P) MaxPab®

Catalog # : H00005600-D01P

規格 : [100 ug]

[List All](#)

Specification

Product Description: Rabbit polyclonal antibody raised against a full-length human MAPK11 protein.

Immunogen: MAPK11 (NP_002742.3, 1 a.a. ~ 364 a.a) full-length human protein.

Sequence:
 MSGPRAGFYRQELNKTWVEPQRLQGLRPVGSAYDARLR
 QKVAVKKLSRPFQSLIHARRTYRELRLKHLKHENVIGLLDVF
 TPATSIDFSEVYLVTTLMGADLNNIVKQALSDEHVQFLVYQLLRGLKYIHSAGIIHR
 DLKPSNVAVNEDCELRLDFGLARQADEEMTGYVATRWYRAPEIMLNWM
 HYNQTVDIWSVGCIMAELLQGKALFPGSDYIDQLKRIMEVVGTPSPEVLA
 KISSEHARTYIQSLPPMPQKDLSSIFRGANPLAIDLGRMLVLDSDQRVSA
 AEALAHAYFSQYHDPEDPEAPEYDESVEAKERTLEEWKELTYQEVLSF
 KPPEPPKPPGSLEIEQ

Host: Rabbit

Reactivity: Human

Quality Control Testing: Antibody reactive against mammalian transfected lysate.

Storage Buffer: In 1x PBS, pH 7.4

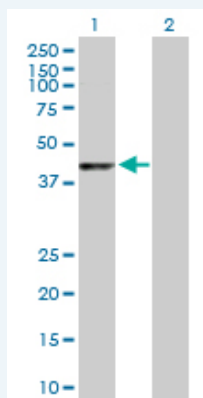
Storage Instruction: Store at -20°C or lower. Aliquot to avoid repeated freezing and thawing.

MSDS:  [Download](#)

Datasheet:  [Download](#)

Applications

Western Blot (Transfected lysate)



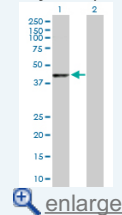
Western Blot analysis of MAPK11 expression in transfected 293T cell line ([H00005600-T02](#)) by MAPK11 MaxPab polyclonal antibody.


Lane 1: MAPK11 transfected lysate(41.40 KDa).

Lane 2: Non-transfected lysate.

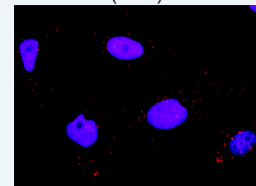
Application Image

Western Blot (Transfected lysate)



 [enlarge](#)

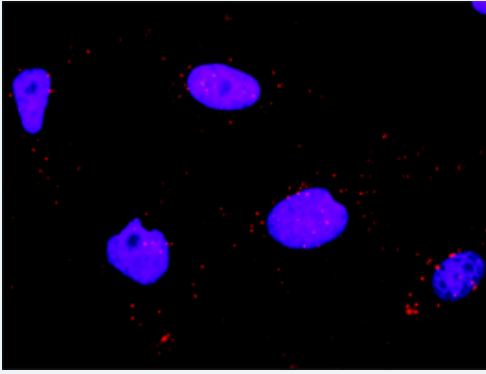
In situ Proximity Ligation Assay (Cell)



 [enlarge](#)

 [Protocol Download](#)

In situ Proximity Ligation Assay (Cell)



Proximity Ligation Analysis of protein-protein interactions between MAPK11 and MAP3K7IP1. HeLa cells were stained with anti-MAPK11 rabbit purified polyclonal 1:1200 and anti-MAP3K7IP1 mouse monoclonal antibody 1:50. Each red dot represents the detection of protein-protein interaction complex, and nuclei were counterstained with DAPI (blue).

Gene Information

Entrez GeneID: [5600](#)

GeneBank Accession#: [NM_002751.5](#)

Protein Accession#: [NP_002742.3](#)

Gene Name: MAPK11

Gene Alias: P38B,P38BETA2,PRKM11,SAPK2,SAPK2B,p38-2,p38Beta

Gene Description: mitogen-activated protein kinase 11

Omim ID: [602898](#)

Gene Ontology: [Hyperlink](#)

Gene Summary: The protein encoded by this gene is a member of the MAP kinase family. MAP kinases act as an integration point for multiple biochemical signals, and are involved in a wide variety of cellular processes such as proliferation, differentiation, transcription regulation, and development. This kinase is most closely related to p38 MAP kinase, both of which can be activated by proinflammatory cytokines and environmental stress. This kinase is activated through its phosphorylation by MAP kinase kinases (MKKs), preferably by MKK6. Transcription factor ATF2/CREB2 has been shown to be a substrate of this kinase. [provided by RefSeq]

Other Designations: OTTHUMP00000196655,mitogen-activated protein kinase p38 beta,mitogen-activated protein kinase p38-2,stress-activated protein kinase-2,stress-activated protein kinase-2b

Gene Pathway

[Amyotrophic lateral sclerosis \(ALS\)](#) [Epithelial cell signaling in Helicobacter pylori infection](#)
[Fc epsilon RI signaling pathway](#) [GnRH signaling pathway](#)
[Leukocyte transendothelial migration](#) [MAPK signaling pathway](#)
[Neurotrophin signaling pathway](#) [T cell receptor signaling pathway](#)
[Toll-like receptor signaling pathway](#) [VEGF signaling pathway](#)

Related Disease

[Cardiovascular Diseases](#) [Diabetes Mellitus, Type 2](#) [Edema](#) [HIV Infections](#)

[服務條款](#) | [隱私權政策](#) | [著作及商標](#) | [網站地圖](#)

©2016 亞諾法生技股份有限公司 Abnova Corporation. 版權所有.