



SZABO SCANDIC

Part of Europa Biosite

Produktinformation



Forschungsprodukte & Biochemikalien



Zellkultur & Verbrauchsmaterial



Diagnostik & molekulare Diagnostik



Laborgeräte & Service

Weitere Information auf den folgenden Seiten!
See the following pages for more information!



Lieferung & Zahlungsart

siehe unsere [Liefer- und Versandbedingungen](#)

Zuschläge

- Mindermengenzuschlag
- Trockeneiszuschlag
- Gefahrgutzuschlag
- Expressversand

SZABO-SCANDIC HandelsgmbH

Quellenstraße 110, A-1100 Wien

T. +43(0)1 489 3961-0

F. +43(0)1 489 3961-7

mail@szabo-scandic.com

www.szabo-scandic.com

[linkedin.com/company/szaboscandic](https://www.linkedin.com/company/szaboscandic) 

MAPK11 monoclonal antibody (M03), clone 1F9

Catalog # : H00005600-M03

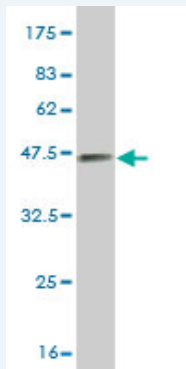
規格 : [100 ug]

[List All](#)

Specification

Product Description:	Mouse monoclonal antibody raised against a partial recombinant MAPK11.
Immunogen:	MAPK11 (AAH27933, 255 a.a. ~ 364 a.a) partial recombinant protein with GST tag. MW of the GST tag alone is 26 KDa.
Sequence:	ARTYIQLSLPPMPQKDLSSIFRGANPLAIDLLGRMLVLDSDQRVSAEALA HAYFSQYHDPEDPEPEAEPEYDESVEAKERTLEEWKELTYQEVLVLSFKPPEP PKPPGSLEIEQ
Host:	Mouse
Reactivity:	Human
Isotype:	IgG2a Kappa

Quality Control Testing: Antibody Reactive Against Recombinant Protein.



Western Blot detection against Immunogen (37.73 KDa) .

Storage Buffer: In 1x PBS, pH 7.4

Storage Instruction: Store at -20°C or lower. Aliquot to avoid repeated freezing and thawing.

MSDS: [Download](#)

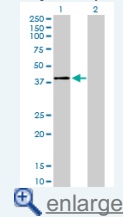
Datasheet: [Download](#)

Applications

Western Blot (Transfected lysate)

Application Image

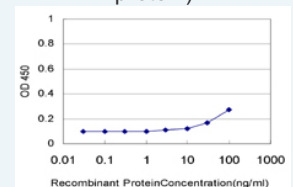
Western Blot (Transfected lysate)



[enlarge](#)

Western Blot (Recombinant protein)

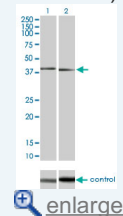
Sandwich ELISA (Recombinant protein)



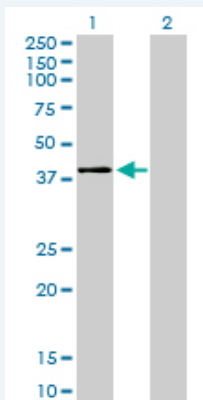
[enlarge](#)

ELISA

RNAi Knockdown (Antibody validated)



[enlarge](#)



Western Blot analysis of MAPK11 expression in transfected 293T cell line by MAPK11 monoclonal antibody (M03), clone 1F9.

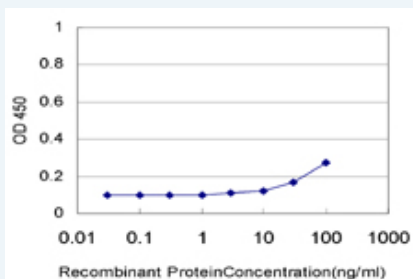
Lane 1: MAPK11 transfected lysate(41.4 KDa).
Lane 2: Non-transfected lysate.

[Protocol Download](#)

Western Blot (Recombinant protein)

[Protocol Download](#)

Sandwich ELISA (Recombinant protein)

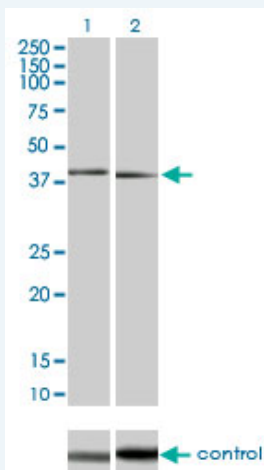


Detection limit for recombinant GST tagged MAPK11 is approximately 10ng/ml as a capture antibody.

[Protocol Download](#)

ELISA

RNAi Knockdown (Antibody validated)



Western blot analysis of MAPK11 over-expressed 293 cell line, cotransfected with MAPK11 Validated Chimera RNAi (Cat # H00005600-R01V) (Lane 2) or non-transfected control (Lane 1). Blot probed with MAPK11 monoclonal antibody (M03) clone 1F9 (Cat # H00005600-M03). GAPDH (36.1 kDa) used as specificity and loading control.

[Protocol Download](#)

Gene Information

Entrez GeneID: [5600](#)

**GeneBank
Accession#:** [BC027933](#)

**Protein
Accession#:** [AAH27933](#)

Gene Name: MAPK11

Gene Alias: P38B,P38BETA2,PRKM11,SAPK2,SAPK2B,p38-2,p38Beta

**Gene
Description:** mitogen-activated protein kinase 11

Omim ID: [602898](#)

Gene Ontology: [Hyperlink](#)

Gene Summary: The protein encoded by this gene is a member of the MAP kinase family. MAP kinases act as an integration point for multiple biochemical signals, and are involved in a wide variety of cellular processes such as proliferation, differentiation, transcription regulation, and development. This kinase is most closely related to p38 MAP kinase, both of which can be activated by proinflammatory cytokines and environmental stress. This kinase is activated through its phosphorylation by MAP kinase kinases (MKKs), preferably by MKK6. Transcription factor ATF2/CREB2 has been shown to be a substrate of this kinase. [provided by RefSeq]

**Other
Designations:** OTTHUMP00000196655,mitogen-activated protein kinase p38 beta,mitogen-activated protein kinase p38-2,stress-activated protein kinase-2,stress-activated protein kinase-2b

Gene Pathway

[Amyotrophic lateral sclerosis \(ALS\)](#) [Epithelial cell signaling in Helicobacter pylori infection](#)
[Fc epsilon RI signaling pathway](#) [GnRH signaling pathway](#)
[Leukocyte transendothelial migration](#) [MAPK signaling pathway](#)
[Neurotrophin signaling pathway](#) [T cell receptor signaling pathway](#)
[Toll-like receptor signaling pathway](#) [VEGF signaling pathway](#)

Related Disease

[Cardiovascular Diseases](#) [Diabetes Mellitus, Type 2](#) [Edema](#) [HIV Infections](#)