



# SZABO SCANDIC

Part of Europa Biosite

## Produktinformation



Forschungsprodukte & Biochemikalien



Zellkultur & Verbrauchsmaterial



Diagnostik & molekulare Diagnostik



Laborgeräte & Service

Weitere Information auf den folgenden Seiten!  
See the following pages for more information!



### Lieferung & Zahlungsart

siehe unsere [Liefer- und Versandbedingungen](#)

### Zuschläge

- Mindermengenzuschlag
- Trockeneiszuschlag
- Gefahrgutzuschlag
- Expressversand

### SZABO-SCANDIC HandelsgmbH

Quellenstraße 110, A-1100 Wien

T. +43(0)1 489 3961-0

F. +43(0)1 489 3961-7

[mail@szabo-scandic.com](mailto:mail@szabo-scandic.com)

[www.szabo-scandic.com](http://www.szabo-scandic.com)

[linkedin.com/company/szaboscandic](https://www.linkedin.com/company/szaboscandic) 

## MAPK11 293T Cell Transient Overexpression Lysate(Denatured)

Catalog # : H00005600-T02

規格 : [ 100 uL ]

[List All](#)

### Specification

**Transfected Cell Line:** 293T

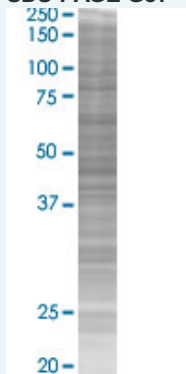
**Plasmid:** pCMV-MAPK11 full-length

**Host:** Human

**Theoretical MW (kDa):** 41.4

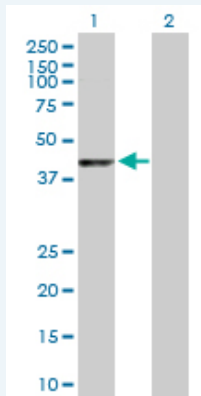
**Quality Control Testing:** Transient overexpression cell lysate was tested with Anti-MAPK11 antibody ([H00005600-D01P](#)) by Western Blots.

#### SDS-PAGE Gel



MAPK11 transfected lysate.

#### Western Blot



Lane 1: MAPK11 transfected lysate ( 41.40 KDa)

Lane 2: Non-transfected lysate.

**Storage Buffer:** 1X Sample Buffer (50 mM Tris-HCl, 2% SDS, 10% glycerol, 300 mM 2-mercaptoethanol, 0.01% Bromophenol blue)

**Storage Instruction:** Store at -80°C. Aliquot to avoid repeated freezing and thawing.

**MSDS:**  [Download](#)

### Applications

### Application Image

Western Blot

## Western Blot

### Gene Information

Entrez GeneID: [5600](#)

GeneBank Accession#: [NM\\_002751.5](#)

Protein Accession#: [NP\\_002742.3](#)

Gene Name: MAPK11

Gene Alias: P38B,P38BETA2,PRKM11,SAPK2,SAPK2B,p38-2,p38Beta

Gene Description: mitogen-activated protein kinase 11

Omim ID: [602898](#)

Gene Ontology: [Hyperlink](#)

**Gene Summary:** The protein encoded by this gene is a member of the MAP kinase family. MAP kinases act as an integration point for multiple biochemical signals, and are involved in a wide variety of cellular processes such as proliferation, differentiation, transcription regulation, and development. This kinase is most closely related to p38 MAP kinase, both of which can be activated by proinflammatory cytokines and environmental stress. This kinase is activated through its phosphorylation by MAP kinase kinases (MKKs), preferably by MKK6. Transcription factor ATF2/CREB2 has been shown to be a substrate of this kinase. [provided by RefSeq]

**Other Designations:** OTTHUMP00000196655,mitogen-activated protein kinase p38 beta,mitogen-activated protein kinase p38-2,stress-activated protein kinase-2,stress-activated protein kinase-2b

### Gene Pathway

[Amyotrophic lateral sclerosis \(ALS\)](#) [Epithelial cell signaling in Helicobacter pylori infection](#)  
[Fc epsilon RI signaling pathway](#) [GnRH signaling pathway](#)  
[Leukocyte transendothelial migration](#) [MAPK signaling pathway](#)  
[Neurotrophin signaling pathway](#) [T cell receptor signaling pathway](#)  
[Toll-like receptor signaling pathway](#) [VEGF signaling pathway](#)

### Related Disease

[Cardiovascular Diseases](#) [Diabetes Mellitus, Type 2](#) [Edema](#) [HIV Infections](#)