



# SZABO SCANDIC

Part of Europa Biosite

## Produktinformation



Forschungsprodukte & Biochemikalien



Zellkultur & Verbrauchsmaterial



Diagnostik & molekulare Diagnostik



Laborgeräte & Service

Weitere Information auf den folgenden Seiten!  
See the following pages for more information!



### Lieferung & Zahlungsart

siehe unsere [Liefer- und Versandbedingungen](#)

### Zuschläge

- Mindermengenzuschlag
- Trockeneiszuschlag
- Gefahrgutzuschlag
- Expressversand

### SZABO-SCANDIC HandelsgmbH

Quellenstraße 110, A-1100 Wien

T. +43(0)1 489 3961-0

F. +43(0)1 489 3961-7

[mail@szabo-scandic.com](mailto:mail@szabo-scandic.com)

[www.szabo-scandic.com](http://www.szabo-scandic.com)

[linkedin.com/company/szaboscandic](https://www.linkedin.com/company/szaboscandic) 



## MAPK9 MaxPab rabbit polyclonal antibody (D01) MaxPab®

Catalog # : H00005601-D01

規格 : [ 100 uL ]

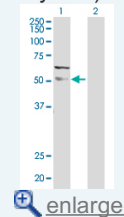
[List All](#)


### Specification

<b>Product Description:</b>	Rabbit polyclonal antibody raised against a full-length human MAPK9 protein.
<b>Immunogen:</b>	MAPK9 (NP_002743.3, 1 a.a. ~ 424 a.a) full-length human protein.
<b>Sequence:</b>	MSDSKCD SQFY SVQVADSTFTVLKRYQQLKPIGSGAQGIVCAAFD TVLG INVAVK KLSRPFQ NQTHAKRAYREL VLLKCVNHKNISLLNVFT PQKLEEF QDVYLV MELMDANLCQVIHMELDHERMSYLLYQMLCGIKHLHSAGIIHRDL KPSNIVKSDCTLKILDFGLARTACTNFMMPYV VTRYRRAPEVILGMGY KENVDIWSVGCIMGELVKGCVIFQGT DHIDQWNKVIEQLGTPSAEFMKKL QPTVRNYVENRPKYPGIKFEELFPDWIFPSESERDKIKTSQARDLLSKML VIDPKRISVDEALRHPYITVWYDPAEAEAPPPQIYDAQLEEREHAIEEWK ELIYKEVMDWEERSKNGVVKDQPSDAAVSSNATPSQSSSINDISSMSTEQ TLASDTDSSLDASTGPLEGCR
<b>Host:</b>	Rabbit
<b>Reactivity:</b>	Human
<b>Quality Control Testing:</b>	Antibody reactive against mammalian transfected lysate.
<b>Storage Buffer:</b>	No additive
<b>Storage Instruction:</b>	Store at -20°C or lower. Aliquot to avoid repeated freezing and thawing.
<b>MSDS:</b>	 <a href="#">Download</a>
<b>Datasheet:</b>	 <a href="#">Download</a>

### Application Image

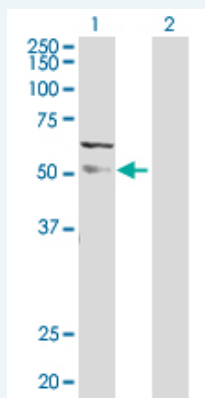
Western Blot (Transfected lysate)



 [enlarge](#)

### Applications

#### Western Blot (Transfected lysate)



Western Blot analysis of MAPK9 expression in transfected 293T cell line ([H00005601-T01](#)) by MAPK9 MaxPab polyclonal antibody.

Lane 1: MAPK9 transfected lysate(48.10 kDa).

Lane 2: Non-transfected lysate.

## Gene Information

**Entrez GeneID:** [5601](#)

**GeneBank Accession#:** [NM\\_002752.3](#)

**Protein Accession#:** [NP\\_002743.3](#)

**Gene Name:** MAPK9

**Gene Alias:** JNK-55, JNK2, JNK2A, JNK2ALPHA, JNK2B, JNK2BETA, PRKM9, SAPK, p54a, p54aSAPK

**Gene Description:** mitogen-activated protein kinase 9

**Omim ID:** [602896](#)

**Gene Ontology:** [Hyperlink](#)

**Gene Summary:** The protein encoded by this gene is a member of the MAP kinase family. MAP kinases act as an integration point for multiple biochemical signals, and are involved in a wide variety of cellular processes such as proliferation, differentiation, transcription regulation and development. This kinase targets specific transcription factors, and thus mediates immediate-early gene expression in response to various cell stimuli. It is most closely related to MAPK8, both of which are involved in UV radiation induced apoptosis, thought to be related to the cytochrome c-mediated cell death pathway. This gene and MAPK8 are also known as c-Jun N-terminal kinases. This kinase blocks the ubiquitination of tumor suppressor p53, and thus it increases the stability of p53 in nonstressed cells. Studies of this gene's mouse counterpart suggest a key role in T-cell differentiation. Several alternatively spliced transcript variants encoding distinct isoforms have been reported. [provided by RefSeq]

**Other Designations:** Jun kinase, MAP kinase 9, c-Jun N-terminal kinase 2, c-Jun kinase 2, mitogen-activated protein kinase 9 isoform JNK2 alpha2, stress-activated protein kinase JNK2

## Gene Pathway

[Adipocytokine signaling pathway Colorectal cancer](#)  
[Epithelial cell signaling in Helicobacter pylori infection](#) [ErbB signaling pathway](#)  
[Fc epsilon RI signaling pathway](#) [Focal adhesion](#) [GnRH signaling pathway](#)  
[Insulin signaling pathway](#) [MAPK signaling pathway](#) [Neurotrophin signaling pathway](#)  
[Pancreatic cancer](#) [Pathways in cancer](#) [T cell receptor signaling pathway](#)  
[Toll-like receptor signaling pathway](#) [Type II diabetes mellitus](#) [Wnt signaling pathway](#)

## Related Disease

[Breast cancer](#) [Breast Neoplasms](#) [Genetic Predisposition to Disease](#) [HIV Infections](#)  
[Tobacco Use Disorder](#)