



SZABO SCANDIC

Part of Europa Biosite

Produktinformation



Forschungsprodukte & Biochemikalien



Zellkultur & Verbrauchsmaterial



Diagnostik & molekulare Diagnostik



Laborgeräte & Service

Weitere Information auf den folgenden Seiten!
See the following pages for more information!



Lieferung & Zahlungsart

siehe unsere [Liefer- und Versandbedingungen](#)

Zuschläge

- Mindermengenzuschlag
- Trockeneiszuschlag
- Gefahrgutzuschlag
- Expressversand

SZABO-SCANDIC HandelsgmbH

Quellenstraße 110, A-1100 Wien

T. +43(0)1 489 3961-0

F. +43(0)1 489 3961-7

mail@szabo-scandic.com

www.szabo-scandic.com

[linkedin.com/company/szaboscandic](https://www.linkedin.com/company/szaboscandic) 



MAPK10 monoclonal antibody (M03), clone 3A3-1A8

Catalog # : H00005602-M03

規格 : [100 ug]

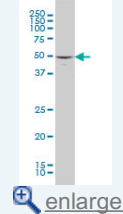
[List All](#)

Specification

Product Description:	Mouse monoclonal antibody raised against a full length recombinant MAPK10.
Immunogen:	MAPK10 (AAH65516.1, 1 a.a. ~ 319 a.a) full-length recombinant protein with GST tag. MW of the GST tag alone is 26 KDa.
Sequence:	MELMDANLCQVIQMELDHERMSYLLYQMLCGIKHLHSAGIIHRDLKPSNIVKSDCTLKILDFGLARTAGTSFMMTPYVVTRYRRAPEVILGMGYKENVDIWSVGCIMGEMVRHKILFPGRDYIDQWNKVEQLGTPCFEFMKKLQPTVRNYVENRPKYAGLTFPKLFPDSLFPADSEHNKLGASQARDLLSKMLVIDPAKRISVDDALQHPYINWYDPAEVEAPPPQIYDKQLDEREHTIEEWKELIYK EVMNSEEKTKNGVVKGQPSPSGAAVNSSESLPPSSSVNDISSMSTDQTLASDTDSSLEASAGPLGCCR
Host:	Mouse
Reactivity:	Human
Isotype:	IgG1 Kappa
Quality Control Testing:	Antibody Reactive Against Recombinant Protein.
Storage Buffer:	In 1x PBS, pH 7.4
Storage Instruction:	Store at -20°C or lower. Aliquot to avoid repeated freezing and thawing.
MSDS:	 Download
Datasheet:	 Download

Application Image

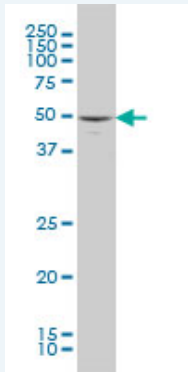
Western Blot (Cell lysate)



ELISA

Applications

Western Blot (Cell lysate)



MAPK10 monoclonal antibody (M03), clone 3A3-1A8 Western Blot analysis of MAPK10 expression in A-431 (Cat # L015V1).

 [Protocol Download](#)

ELISA

Gene Information

Entrez GeneID: [5602](#)

GeneBank
Accession#: [BC065516](#)

Protein
Accession#: [AAH65516.1](#)

Gene Name: MAPK10

Gene Alias: [FLJ12099](#),[FLJ33785](#),[JNK3](#),[JNK3A](#),[MGC50974](#),[PRKM10](#),[p493F12](#),[p54bS](#)
[APK](#)

Gene
Description: mitogen-activated protein kinase 10

Omim ID: [602897](#), [606369](#)

Gene Ontology: [Hyperlink](#)

Gene Summary: The protein encoded by this gene is a member of the MAP kinase family. MAP kinases act as an integration point for multiple biochemical signals, and are involved in a wide variety of cellular processes such as proliferation, differentiation, transcription regulation and development. This protein is a neuronal-specific form of c-Jun N-terminal kinases (JNKs). Through its phosphorylation and nuclear localization, this kinase plays regulatory roles in the signaling pathways during neuronal apoptosis. Beta-arrestin 2, a receptor-regulated MAP kinase scaffold protein, is found to interact with, and stimulate the phosphorylation of this kinase by MAP kinase kinase 4 (MKK4). Cyclin-dependent kinase 5 can phosphorylate, and inhibit the activity of this kinase, which may be important in preventing neuronal apoptosis. Four alternatively spliced transcript variants encoding distinct isoforms have been reported.
[provided by RefSeq]

Other
Designations: JNK3 alpha protein kinase,MAP
kinase,[OTTHUMP00000161180](#),[OTTHUMP00000161182](#),[OTTHUMP00000161183](#),c-Jun N-terminal kinase 3,c-Jun kinase 3,stress activated protein kinase JNK3,stress activated protein kinase beta

Gene Pathway

[Adipocytokine signaling pathway](#) [Colorectal cancer](#)
[Epithelial cell signaling in Helicobacter pylori infection](#) [ErbB signaling pathway](#)
[Fc epsilon RI signaling pathway](#) [Focal adhesion](#) [GnRH signaling pathway](#)
[Insulin signaling pathway](#) [MAPK signaling pathway](#) [Neurotrophin signaling pathway](#)
[Pancreatic cancer](#) [Pathways in cancer](#) [Toll-like receptor signaling pathway](#)
[Type II diabetes mellitus](#) [Wnt signaling pathway](#)

Related Disease

[HIV Infections](#)