



# SZABO SCANDIC

Part of Europa Biosite

## Produktinformation



Forschungsprodukte & Biochemikalien



Zellkultur & Verbrauchsmaterial



Diagnostik & molekulare Diagnostik



Laborgeräte & Service

Weitere Information auf den folgenden Seiten!  
See the following pages for more information!



### Lieferung & Zahlungsart

siehe unsere [Liefer- und Versandbedingungen](#)

### Zuschläge

- Mindermengenzuschlag
- Trockeneiszuschlag
- Gefahrgutzuschlag
- Expressversand

### SZABO-SCANDIC HandelsgmbH

Quellenstraße 110, A-1100 Wien

T. +43(0)1 489 3961-0

F. +43(0)1 489 3961-7

[mail@szabo-scandic.com](mailto:mail@szabo-scandic.com)

[www.szabo-scandic.com](http://www.szabo-scandic.com)

[linkedin.com/company/szaboscandic](https://www.linkedin.com/company/szaboscandic) 

## MAPK13 purified MaxPab rabbit polyclonal antibody (D01P) MaxPab®

Catalog # : H00005603-D01P

規格 : [ 100 ug ]

[List All](#)

### Specification

**Product Description:** Rabbit polyclonal antibody raised against a full-length human MAPK13 protein.

**Immunogen:** MAPK13 (NP\_002745.1, 1 a.a. ~ 365 a.a) full-length human protein.

**Sequence:**  
 MSLIRKKGFYKQDVNKTAWELPKTYVSPTHVGSAGYGSVCSAIDKRSGE  
 KVAIKKLSRPFQSEIFAKRAYRELLLLKHMQHENVIGLLDVFTPASSLRNF  
 YDFYLVMPFMQTDLQKIMGMEFSEEKIYLVYQMLKGLKYIHSAGVVHR  
 DLKPGNLAVNEDCELKILDFGLARHADAEMTGYYVTRWYRAPEVILSWM  
 HYNQTVDIWSVGCIMAEMLTGKTLFKGKDYLDQLTQILKVTGVPGTEFV  
 QKLNDKAAKSYIQLPQTPRKDFQLFPRASPQAADLLEKMLELDVDKR  
 LTAQALTHPFFEPFRDPEEETEAQQPFDDSLEHEKLTVDEWKQHIIYKEI  
 VNFSPARKDSRRRRSGMKL

**Host:** Rabbit

**Reactivity:** Human

**Quality Control Testing:** Antibody reactive against mammalian transfected lysate.

**Storage Buffer:** In 1x PBS, pH 7.4

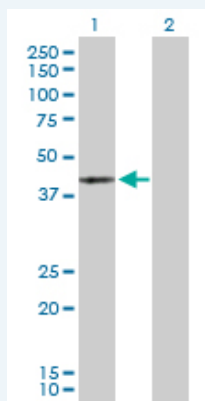
**Storage Instruction:** Store at -20°C or lower. Aliquot to avoid repeated freezing and thawing.

**MSDS:** [Download](#)

**Datasheet:** [Download](#)

### Applications

#### Western Blot (Transfected lysate)



Western Blot analysis of MAPK13 expression in transfected 293T cell line ([H00005603-T02](#)) by MAPK13 MaxPab polyclonal antibody.

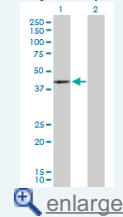
Lane 1: MAPK13 transfected lysate(42.10 KDa).

Lane 2: Non-transfected lysate.

[Protocol Download](#)

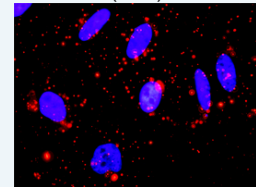
### Application Image

#### Western Blot (Transfected lysate)



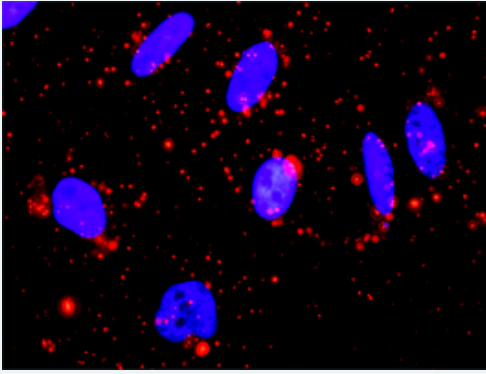
[enlarge](#)

#### In situ Proximity Ligation Assay (Cell)



[enlarge](#)

## In situ Proximity Ligation Assay (Cell)



Proximity Ligation Analysis of protein-protein interactions between MAPK13 and MAPKAPK3. HeLa cells were stained with anti-MAPK13 rabbit purified polyclonal 1:1200 and anti-MAPKAPK3 mouse monoclonal antibody 1:50. Each red dot represents the detection of protein-protein interaction complex, and nuclei were counterstained with DAPI (blue).

---

### Gene Information

**Entrez GeneID:** [5603](#)

**GeneBank Accession#:** [NM\\_002754.3](#)

**Protein Accession#:** [NP\\_002745.1](#)

**Gene Name:** MAPK13

**Gene Alias:** MGC99536,PRKM13,SAPK4,p38delta

**Gene Description:** mitogen-activated protein kinase 13

**Omim ID:** [602899](#)

**Gene Ontology:** [Hyperlink](#)

**Gene Summary:** The protein encoded by this gene is a member of the MAP kinase family. MAP kinases act as an integration point for multiple biochemical signals, and are involved in a wide variety of cellular processes such as proliferation, differentiation, transcription regulation and development. This kinase is closely related to p38 MAP kinase, both of which can be activated by proinflammatory cytokines and cellular stress. MAP kinase kinases 3, and 6 can phosphorylate and activate this kinase. Transcription factor ATF2, and microtubule dynamics regulator stathmin have been shown to be the substrates of this kinase. [provided by RefSeq]

**Other Designations:** OTTHUMP00000016282,mitogen-activated protein kinase p38 delta,stress-activated protein kinase 4

---

### Gene Pathway

[Amyotrophic lateral sclerosis \(ALS\)](#) [Epithelial cell signaling in Helicobacter pylori infection](#) [Fc epsilon RI signaling pathway](#) [GnRH signaling pathway](#) [Leukocyte transendothelial migration](#) [MAPK signaling pathway](#) [Neurotrophin signaling pathway](#) [T cell receptor signaling pathway](#) [Toll-like receptor signaling pathway](#) [VEGF signaling pathway](#)

---

### Related Disease

[Cardiovascular Diseases](#) [Diabetes Mellitus, Type 2](#) [Edema](#) [HIV Infections](#)

