



# SZABO SCANDIC

Part of Europa Biosite

## Produktinformation



Forschungsprodukte & Biochemikalien



Zellkultur & Verbrauchsmaterial



Diagnostik & molekulare Diagnostik



Laborgeräte & Service

Weitere Information auf den folgenden Seiten!  
See the following pages for more information!



### Lieferung & Zahlungsart

siehe unsere [Liefer- und Versandbedingungen](#)

### Zuschläge

- Mindermengenzuschlag
- Trockeneiszuschlag
- Gefahrgutzuschlag
- Expressversand

### SZABO-SCANDIC HandelsgmbH

Quellenstraße 110, A-1100 Wien

T. +43(0)1 489 3961-0

F. +43(0)1 489 3961-7

[mail@szabo-scandic.com](mailto:mail@szabo-scandic.com)

[www.szabo-scandic.com](http://www.szabo-scandic.com)

[linkedin.com/company/szaboscandic](https://www.linkedin.com/company/szaboscandic) 

## MAP2K1 monoclonal antibody (M01), clone 1B5

Catalog # : H00005604-M01

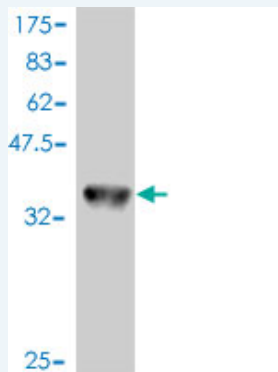
規格 : [ 100 ug ]

[List All](#)

### Specification

|                             |   |
|-----------------------------|---|
| <b>Product Description:</b> | Mouse monoclonal antibody raised against a partial recombinant MAP2K1.  |
| <b>Immunogen:</b>           | MAP2K1 (NP_002746, 294 a.a. ~ 393 a.a) partial recombinant protein with GST tag. MW of the GST tag alone is 26 KDa. |
| <b>Sequence:</b>            | GRPLSSYGMDSRPPMAIFELLDYVNEPPPKLPSGVFSLEFQDFVNKCLIK<br>NPAERADLKQLMVHAFIKRSDAEEVDFAGWLCSTIGLNQPSTPTHAAGV             |
| <b>Host:</b>                | Mouse   |
| <b>Reactivity:</b>          | Human   |
| <b>Isotype:</b>             | IgG1 kappa  |

**Quality Control Testing:** Antibody Reactive Against Recombinant Protein.



Western Blot detection against Immunogen (36.63 KDa) .

**Storage Buffer:** In 1x PBS, pH 7.4

**Storage Instruction:** Store at -20°C or lower. Aliquot to avoid repeated freezing and thawing.

**MSDS:** [Download](#)

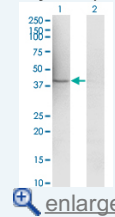
**Datasheet:** [Download](#)

### Applications

Western Blot (Transfected lysate)

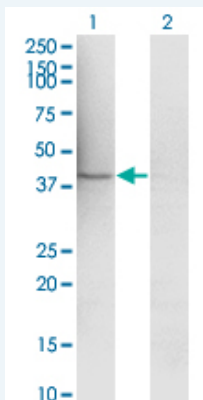
### Application Image

Western Blot (Transfected lysate)



Western Blot (Recombinant protein)

ELISA



Western Blot analysis of MAP2K1 expression in transfected 293T cell line by MAP2K1 monoclonal antibody (M01), clone 1B5.

Lane 1: MAP2K1 transfected lysate (Predicted MW: 43.439 KDa).  
Lane 2: Non-transfected lysate.

 [Protocol Download](#)

### Western Blot (Recombinant protein)

 [Protocol Download](#)

### ELISA

### Gene Information

Entrez GeneID: [5604](#)

GeneBank Accession#: [NM\\_002755](#)

Protein Accession#: [NP\\_002746](#)

Gene Name: MAP2K1

Gene Alias: MAPKK1,MEK1,MKK1,PRKMK1

Gene Description: mitogen-activated protein kinase kinase 1

Omim ID: [176872](#)

Gene Ontology: [Hyperlink](#)

**Gene Summary:** The protein encoded by this gene is a member of the dual specificity protein kinase family, which acts as a mitogen-activated protein (MAP) kinase kinase. MAP kinases, also known as extracellular signal-regulated kinases (ERKs), act as an integration point for multiple biochemical signals. This protein kinase lies upstream of MAP kinases and stimulates the enzymatic activity of MAP kinases upon wide variety of extra- and intracellular signals. As an essential component of MAP kinase signal transduction pathway, this kinase is involved in many cellular processes such as proliferation, differentiation, transcription regulation and development. [provided by RefSeq]

Other Designations: protein kinase, mitogen-activated, kinase 1 (MAP kinase kinase 1)

### Gene Pathway

[Acute myeloid leukemia B cell receptor signaling pathway](#) [Bladder cancer Chemokine signaling pathway](#) [Chronic myeloid leukemia](#) [Colorectal cancer](#) [Dorso-ventral axis formation](#) [Endometrial cancer](#) [ErbB signaling pathway](#) [Fc epsilon RI signaling pathway](#) [Fc gamma R-mediated phagocytosis](#) [Focal adhesion](#)

[Gap junction](#) [Glioma](#) [GnRH signaling pathway](#) [Insulin signaling pathway](#)  
[Long-term depression](#) [Long-term potentiation](#) [MAPK signaling pathway](#) [Melanogenesis](#)  
[Melanoma](#) [Natural killer cell mediated cytotoxicity](#) [Neurotrophin signaling pathway](#)  
[Non-small cell lung cancer](#) [Pancreatic cancer](#) [Pathways in cancer](#) [Prion diseases](#)  
[Prostate cancer](#) [Regulation of actin cytoskeleton](#) [Renal cell carcinoma](#)  
[T cell receptor signaling pathway](#) [Thyroid cancer](#) [Toll-like receptor signaling pathway](#)  
[Vascular smooth muscle contraction](#) [VEGF signaling pathway](#)

#### **Related Disease**

---

[Abnormalities, Multiple](#) [Adenocarcinoma](#) [Carcinoma, Non-Small-Cell Lung](#)  
[Carcinoma, Squamous Cell](#) [Cognition Disorders](#) [Developmental Disabilities](#)  
[Ectodermal Dysplasia](#) [Genetic Predisposition to Disease](#) [Glioma](#) [Heart Defects, Congenital](#)  
[LEOPARD Syndrome](#) [Lung Neoplasms](#) [Mental Retardation](#) [Noonan Syndrome](#)  
[Pancreatic Neoplasms](#) [Skin Abnormalities Syndrome](#)

---

[服務條款](#) | [隱私權政策](#) | [著作及商標](#) | [網站地圖](#)

©2016 亞諾法生技股份有限公司 Abnova Corporation. 版權所有.