



# SZABO SCANDIC

Part of Europa Biosite

## Produktinformation



Forschungsprodukte & Biochemikalien



Zellkultur & Verbrauchsmaterial



Diagnostik & molekulare Diagnostik



Laborgeräte & Service

Weitere Information auf den folgenden Seiten!  
See the following pages for more information!



### Lieferung & Zahlungsart

siehe unsere [Liefer- und Versandbedingungen](#)

### Zuschläge

- Mindermengenzuschlag
- Trockeneiszuschlag
- Gefahrgutzuschlag
- Expressversand

### SZABO-SCANDIC HandelsgmbH

Quellenstraße 110, A-1100 Wien

T. +43(0)1 489 3961-0

F. +43(0)1 489 3961-7

[mail@szabo-scandic.com](mailto:mail@szabo-scandic.com)

[www.szabo-scandic.com](http://www.szabo-scandic.com)

[linkedin.com/company/szaboscandic](https://www.linkedin.com/company/szaboscandic) 

# MAP2K2 purified MaxPab rabbit polyclonal antibody (D01P) MaxPab®

Catalog # : H00005605-D01P

規格 : [ 100 ug ]

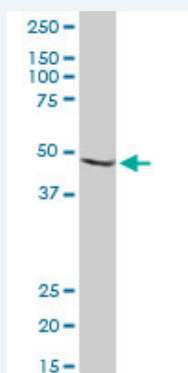
[List All](#)

## Specification

<b>Product Description:</b>	Rabbit polyclonal antibody raised against a full-length human MAP2K2 protein.
<b>Immunogen:</b>	MAP2K2 (NP_109587.1, 1 a.a. ~ 400 a.a) full-length human protein.
<b>Sequence:</b>	MLARRKPVLPALNTINPTIAEGPSPTSEGASEANLVDLQKKLEELDEQQ KKRLEAFLTQKAKVGELKDDDFERISELGAGNGGVTKVQHRPSGLIMA RKLHLLEIKPAIRNQIIRELQVLHECNSPYIVGFYGFYSDGEISICMEHMDG GSLDQVLKEAKRIPEEILGKVSIAVLRGLAYLREKHQIMHRDVKPSNILVNS RGEIKLCDFGVSGQLIDSMANSFVGTRSYMAPERLQGTHYSVQSDIWSM GLSLVELAVGRYPPIPPDAKELEAIFGRPVVDGEEGEPHSISPRPRPPGR PVSFGHMDSRPAMAIFELLDYVNEPPPPLPNGVFTPDFQEFVNKCLIKNP AERADLKMLTNHTFIKRSEVEEVDFAFWLCKTLRLNQPGTPTRTAV
<b>Host:</b>	Rabbit
<b>Reactivity:</b>	Human
<b>Quality Control Testing:</b>	Antibody reactive against mammalian transfected lysate.
<b>Storage Buffer:</b>	In 1x PBS, pH 7.4
<b>Storage Instruction:</b>	Store at -20°C or lower. Aliquot to avoid repeated freezing and thawing.
<b>MSDS:</b>	<a href="#">Download</a>
<b>Datasheet:</b>	<a href="#">Download</a>

## Applications

### Western Blot (Tissue lysate)



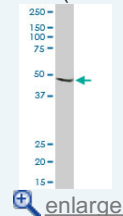
MAP2K2 MaxPab rabbit polyclonal antibody. Western Blot analysis of MAP2K2 expression in human kidney.

[Protocol Download](#)

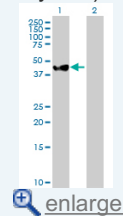
### Western Blot (Transfected lysate)

## Application Image

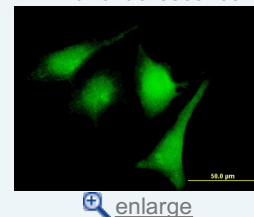
### Western Blot (Tissue lysate)

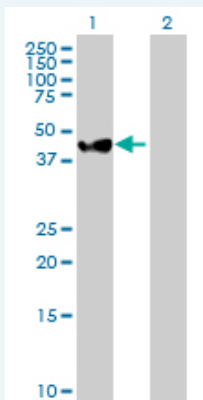


### Western Blot (Transfected lysate)



### Immunofluorescence



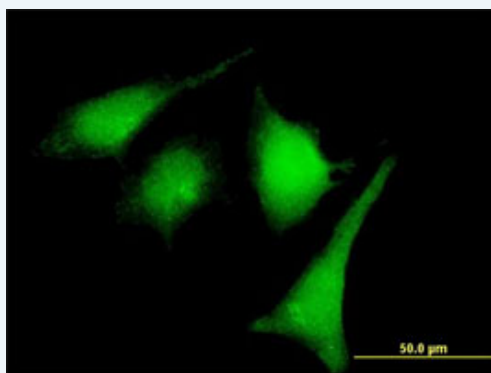


Western Blot analysis of MAP2K2 expression in transfected 293T cell line ([H00005605-T01](#)) by MAP2K2 MaxPab polyclonal antibody.

Lane 1: MAP2K2 transfected lysate(44.40 KDa).  
Lane 2: Non-transfected lysate.

[Protocol Download](#)

### Immunofluorescence



enlarge this image

Immunofluorescence of purified MaxPab rabbit antibody to MAP2K2 on HeLa cell. [antibody concentration 10 ug/ml]

[Protocol Download](#)

### Gene Information

Entrez GeneID: [5605](#)

GeneBank [NM\\_030662](#)  
Accession#:

Protein [NP\\_109587.1](#)  
Accession#:

Gene Name: MAP2K2

Gene Alias: FLJ26075,MAPKK2,MEK2,MKK2,PRKMK2

Gene Description: mitogen-activated protein kinase kinase 2

Omim ID: [115150](#), [601263](#)

Gene Ontology: [Hyperlink](#)

**Gene Summary:** The protein encoded by this gene is a dual specificity protein kinase that belongs to the MAP kinase kinase family. This kinase is known to play a critical role in mitogen growth factor signal transduction. It phosphorylates and thus activates MAPK1/ERK2 and MAPK2/ERK3. The activation of this kinase itself is dependent on the Ser/Thr phosphorylation by MAP kinase kinase kinases. Mutations in this gene cause cardiofaciocutaneous syndrome (CFC syndrome), a disease characterized by heart defects, mental retardation, and distinctive facial

features similar to those found in Noonan syndrome. The inhibition or degradation of this kinase is also found to be involved in the pathogenesis of Yersinia and anthrax. A pseudogene, which is located on chromosome 7, has been identified for this gene. [provided by RefSeq

**Other Designations:** ERK activator kinase 2,MAP kinase kinase 2,MAPK/ERK kinase 2,dual specificity mitogen-activated protein kinase kinase 2,mitogen-activated protein kinase kinase 2, p45

### Gene Pathway

[Acute myeloid leukemia](#) [B cell receptor signaling pathway](#) [Bladder cancer](#)  
[Chronic myeloid leukemia](#) [Endometrial cancer](#) [ErbB signaling pathway](#)  
[Fc epsilon RI signaling pathway](#) [Gap junction](#) [Glioma](#) [GnRH signaling pathway](#)  
[Insulin signaling pathway](#) [Long-term depression](#) [Long-term potentiation](#)  
[MAPK signaling pathway](#) [Melanogenesis](#) [Melanoma](#) [Natural killer cell mediated cytotoxicity](#)  
[Neurotrophin signaling pathway](#) [Non-small cell lung cancer](#) [Pathways in cancer](#)  
[Prion diseases](#) [Prostate cancer](#) [Regulation of actin cytoskeleton](#) [Renal cell carcinoma](#)  
[T cell receptor signaling pathway](#) [Thyroid cancer](#) [Toll-like receptor signaling pathway](#)  
[Vascular smooth muscle contraction](#) [VEGF signaling pathway](#)

### Related Disease

[Abnormalities, Multiple Ectodermal Dysplasia](#) [Genetic Predisposition to Disease](#) [Glioma](#)  
[Heart Defects, Congenital](#) [LEOPARD Syndrome](#) [Mental Retardation](#) [Noonan Syndrome](#)  
[Skin Abnormalities Syndrome](#)

[服務條款](#) | [隱私權政策](#) | [著作及商標](#) | [網站地圖](#)

©2016 亞諾法生技股份有限公司 Abnova Corporation. 版權所有.