



SZABO SCANDIC

Part of Europa Biosite

Produktinformation



Forschungsprodukte & Biochemikalien



Zellkultur & Verbrauchsmaterial



Diagnostik & molekulare Diagnostik



Laborgeräte & Service

Weitere Information auf den folgenden Seiten!
See the following pages for more information!



Lieferung & Zahlungsart

siehe unsere [Liefer- und Versandbedingungen](#)

Zuschläge

- Mindermengenzuschlag
- Trockeneiszuschlag
- Gefahrgutzuschlag
- Expressversand

SZABO-SCANDIC HandelsgmbH

Quellenstraße 110, A-1100 Wien

T. +43(0)1 489 3961-0

F. +43(0)1 489 3961-7

mail@szabo-scandic.com

www.szabo-scandic.com

[linkedin.com/company/szaboscandic](https://www.linkedin.com/company/szaboscandic) 

MAP2K2 monoclonal antibody (M11), clone 8D10

Catalog # : H00005605-M11

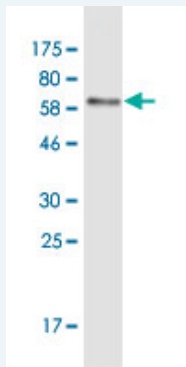
規格 : [100 ug]

[List All](#)

Specification

| | |
|-----------------------------|---|
| Product Description: | Mouse monoclonal antibody raised against a partial recombinant MAP2K2. |
| Immunogen: | MAP2K2 (AAH00471, 1 a.a. ~ 360 a.a) partial recombinant protein with GST tag. MW of the GST tag alone is 26 KDa. |
| Sequence: | MLARRKPVLPALTINPTIAEGPSPTSEGASEANLVDLQKKLEELDEQQ KKRLEAFLTQKAKVGELKDDDFERISELGAGNGGVVTKVQHRPSGLIMA RKLHLEIKPAIRNQIIRELQVLHECNSPYIVGFYGFYSDGEISICMEHMDG GSLDQVLKEAKRIPEEILGKVSIAVLRGLAYLREKHQIMHRDVKPSNILVNS RGEIKLCDFGVSGQLIDSMANSFVGTRSYMAPERLQGTHYSVQSDIWSM GLSLVELAVGRYPIPPPDAAKELEAIFGRPVDGEEGEPHSISPRPRPPGR PVSGHGMDSRPAMAIFELLDYVNEPPPKLPNGVFTPDFQEFVNKCLIKNP AERADL |
| Host: | Mouse |
| Reactivity: | Human |
| Isotype: | IgG2b Kappa |

Quality Control Testing: Antibody Reactive Against Recombinant Protein.



Western Blot detection against Immunogen (65.23 KDa) .

Storage Buffer: In 1x PBS, pH 7.4

Storage Instruction: Store at -20°C or lower. Aliquot to avoid repeated freezing and thawing.

MSDS: [Download](#)

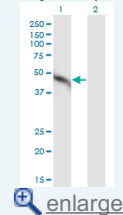
Datasheet: [Download](#)

Applications

Western Blot (Transfected lysate)

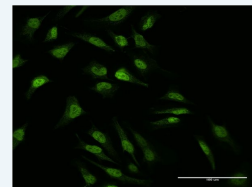
Application Image

Western Blot (Transfected lysate)

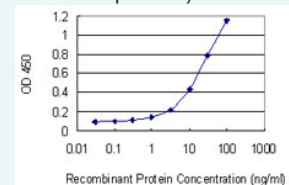


Western Blot (Recombinant protein)

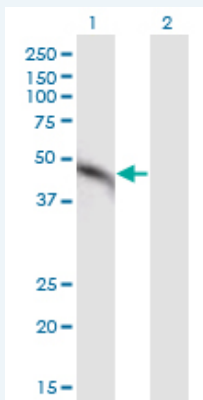
Immunofluorescence



Sandwich ELISA (Recombinant protein)



ELISA



Western Blot analysis of MAP2K2 expression in transfected 293T cell line by MAP2K2 monoclonal antibody (M11), clone 8D10.

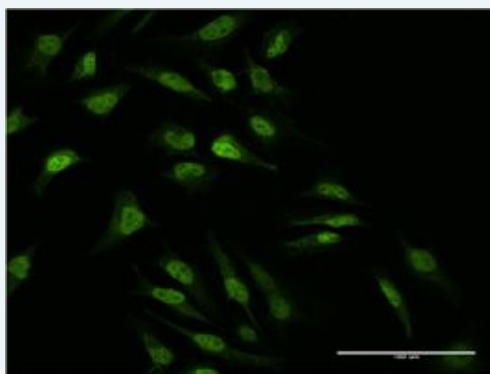
Lane 1: MAP2K2 transfected lysate (Predicted MW: 44.4 KDa).
Lane 2: Non-transfected lysate.

[Protocol Download](#)

Western Blot (Recombinant protein)

[Protocol Download](#)

Immunofluorescence

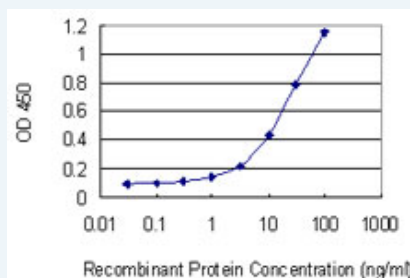


[enlarge this image](#)

Immunofluorescence of monoclonal antibody to MAP2K2 on HeLa cell . [antibody concentration 10 ug/ml]

[Protocol Download](#)

Sandwich ELISA (Recombinant protein)



Detection limit for recombinant GST tagged MAP2K2 is 0.3 ng/ml as a capture antibody.

[Protocol Download](#)

ELISA

Gene Information

Entrez GeneID: [5605](#)

GeneBank [BC000471](#)

Accession#:

Protein [AAH00471](#)

Accession#:

Gene Name: MAP2K2

Gene Alias: FLJ26075,MAPKK2,MEK2,MKK2,PRKMK2

Gene Description: mitogen-activated protein kinase kinase 2

Omim ID: [115150](#), [601263](#)

Gene Ontology: [Hyperlink](#)

Gene Summary: The protein encoded by this gene is a dual specificity protein kinase that belongs to the MAP kinase kinase family. This kinase is known to play a critical role in mitogen growth factor signal transduction. It phosphorylates and thus activates MAPK1/ERK2 and MAPK2/ERK3. The activation of this kinase itself is dependent on the Ser/Thr phosphorylation by MAP kinase kinase kinases. Mutations in this gene cause cardiofaciocutaneous syndrome (CFC syndrome), a disease characterized by heart defects, mental retardation, and distinctive facial features similar to those found in Noonan syndrome. The inhibition or degradation of this kinase is also found to be involved in the pathogenesis of Yersinia and anthrax. A pseudogene, which is located on chromosome 7, has been identified for this gene. [provided by RefSeq]

Other Designations: ERK activator kinase 2,MAP kinase kinase 2,MAPK/ERK kinase 2,dual specificity mitogen-activated protein kinase kinase 2,mitogen-activated protein kinase kinase 2, p45

Gene Pathway

[Acute myeloid leukemia](#) [B cell receptor signaling pathway](#) [Bladder cancer](#)
[Chronic myeloid leukemia](#) [Endometrial cancer](#) [ErbB signaling pathway](#)
[Fc epsilon RI signaling pathway](#) [Gap junction](#) [Glioma](#) [GnRH signaling pathway](#)
[Insulin signaling pathway](#) [Long-term depression](#) [Long-term potentiation](#)
[MAPK signaling pathway](#) [Melanogenesis](#) [Melanoma](#) [Natural killer cell mediated cytotoxicity](#)
[Neurotrophin signaling pathway](#) [Non-small cell lung cancer](#) [Pathways in cancer](#)
[Prion diseases](#) [Prostate cancer](#) [Regulation of actin cytoskeleton](#) [Renal cell carcinoma](#)
[T cell receptor signaling pathway](#) [Thyroid cancer](#) [Toll-like receptor signaling pathway](#)
[Vascular smooth muscle contraction](#) [VEGF signaling pathway](#)

Related Disease

[Abnormalities, Multiple](#) [Ectodermal Dysplasia](#) [Genetic Predisposition to Disease](#) [Glioma](#)
[Heart Defects, Congenital](#) [LEOPARD Syndrome](#) [Mental Retardation](#) [Noonan Syndrome](#)
[Skin Abnormalities](#) [Syndrome](#)

[服務條款](#) | [隱私權政策](#) | [著作及商標](#) | [網站地圖](#)

©2016 亞諾法生技股份有限公司 Abnova Corporation. 版權所有.