



SZABO SCANDIC

Part of Europa Biosite

Produktinformation



Forschungsprodukte & Biochemikalien



Zellkultur & Verbrauchsmaterial



Diagnostik & molekulare Diagnostik



Laborgeräte & Service

Weitere Information auf den folgenden Seiten!
See the following pages for more information!



Lieferung & Zahlungsart

siehe unsere [Liefer- und Versandbedingungen](#)

Zuschläge

- Mindermengenzuschlag
- Trockeneiszuschlag
- Gefahrgutzuschlag
- Expressversand

SZABO-SCANDIC HandelsgmbH

Quellenstraße 110, A-1100 Wien

T. +43(0)1 489 3961-0

F. +43(0)1 489 3961-7

mail@szabo-scandic.com

www.szabo-scandic.com

[linkedin.com/company/szaboscandic](https://www.linkedin.com/company/szaboscandic) 

MAP2K3 MaxPab mouse polyclonal antibody (B01) MaxPab®

Catalog # : H00005606-B01

規格 : [50 uL]

[List All](#)

Specification

Product Description: Mouse polyclonal antibody raised against a full-length human MAP2K3 protein.

Immunogen: MAP2K3 (NP_659731.1, 1 a.a. ~ 347 a.a) full-length human protein.

Sequence:
 MESPASSQPASMPQSKGKSKRKKDLRISCMSKPPAPNPTPPRNLDLSDRTF
 ITIGDRNFVEADDLVTISELGRGAYGVWEKVRHAQSGTIMAVKRIRATVN
 SSEQKRLMLDLINMRTVDCFYTVTFYGALFREGDVVICMELMDTSLDK
 FYRKVLKDNMTIPEDILGEIAVSIVRALEHLHSLKLSVIHRDVKPSNVLINKEG
 HVKMCDFGISGYLVDSVAKTMDAGCKPYMAPERINPELNQKGYNVKSDV
 WSLGITMIEMAILRFPYESWGTPFQQLKQVVEEPPQLPADRFSPFVD
 FTAQCLRKNPAERMSYLELMEHPFFTLHKT KKT DIAAFVKEILGEDS

Host: Mouse

Reactivity: Human

Quality Control Testing: Antibody reactive against mammalian transfected lysate.

Storage Buffer: No additive

Storage Instruction: Store at -20°C or lower. Aliquot to avoid repeated freezing and thawing.

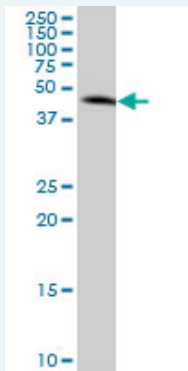
Note: For IHC and IF applications, antibody purification with Protein A will be needed prior to use.

MSDS:  [Download](#)

Datasheet:  [Download](#)

Applications

Western Blot (Cell lysate)



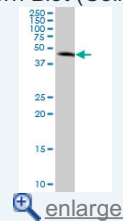
MAP2K3 MaxPab polyclonal antibody. Western Blot analysis of MAP2K3 expression in A-431.

 [Protocol Download](#)

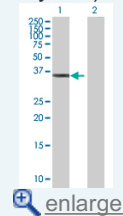
Western Blot (Transfected lysate)

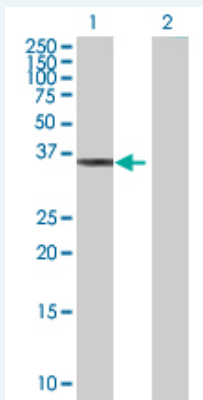
Application Image

Western Blot (Cell lysate)




Western Blot (Transfected lysate)





Western Blot analysis of MAP2K3 expression in transfected 293T cell line ([H00005606-T01](#)) by MAP2K3 MaxPab polyclonal antibody.

Lane 1: MAP2K3 transfected lysate(38.17 KDa).
Lane 2: Non-transfected lysate.

 [Protocol Download](#)

Gene Information

Entrez GeneID: [5606](#)

GeneBank Accession#: [NM_145109.1](#)

Protein Accession#: [NP_659731.1](#)

Gene Name: MAP2K3

Gene Alias: MAPKK3,MEK3,MKK3,PRKMK3

Gene Description: mitogen-activated protein kinase kinase 3

Omim ID: [602315](#)

Gene Ontology: [Hyperlink](#)

Gene Summary: The protein encoded by this gene is a dual specificity protein kinase that belongs to the MAP kinase kinase family. This kinase is activated by mitogenic and environmental stress, and participates in the MAP kinase-mediated signaling cascade. It phosphorylates and thus activates MAPK14/p38-MAPK. This kinase can be activated by insulin, and is necessary for the expression of glucose transporter. Expression of RAS oncogene is found to result in the accumulation of the active form of this kinase, which thus leads to the constitutive activation of MAPK14, and confers oncogenic transformation of primary cells. The inhibition of this kinase is involved in the pathogenesis of Yersinia pseudotuberculosis. Multiple alternatively spliced transcript variants that encode distinct isoforms have been reported for this gene. [provided by RefSeq]

Other Designations: MAP kinase kinase 3,MAPK/ERK kinase 3,OTTHUMP00000166044,dual specificity mitogen activated protein kinase kinase 3

Gene Pathway

[Amyotrophic lateral sclerosis \(ALS\) Fc epsilon RI signaling pathway](#)
[GnRH signaling pathway](#) [MAPK signaling pathway](#) [Toll-like receptor signaling pathway](#)

