



# SZABO SCANDIC

Part of Europa Biosite

## Produktinformation



Forschungsprodukte & Biochemikalien



Zellkultur & Verbrauchsmaterial



Diagnostik & molekulare Diagnostik



Laborgeräte & Service

Weitere Information auf den folgenden Seiten!  
See the following pages for more information!



### Lieferung & Zahlungsart

siehe unsere [Liefer- und Versandbedingungen](#)

### Zuschläge

- Mindermengenzuschlag
- Trockeneiszuschlag
- Gefahrgutzuschlag
- Expressversand

### SZABO-SCANDIC HandelsgmbH

Quellenstraße 110, A-1100 Wien

T. +43(0)1 489 3961-0

F. +43(0)1 489 3961-7

[mail@szabo-scandic.com](mailto:mail@szabo-scandic.com)

[www.szabo-scandic.com](http://www.szabo-scandic.com)

[linkedin.com/company/szaboscandic](https://www.linkedin.com/company/szaboscandic) 

## MAP2K3 purified MaxPab rabbit polyclonal antibody (D01P) MaxPab®

Catalog # : H00005606-D01P

規格 : [ 100 ug ]

[List All](#)

### Specification

**Product Description:** Rabbit polyclonal antibody raised against a full-length human MAP2K3 protein.

**Immunogen:** MAP2K3 (NP\_659731.1, 1 a.a. ~ 347 a.a) full-length human protein.

**Sequence:**  
 MESPASSQPASMPQSKGKSKRKKDLRISCMSKPPAPNPTPPRNLDLSDRTF  
 ITIGDRNFEVEADDLVTISELGRGAYGVWEKVRHAQSGTIMAVKRIRATVN  
 SQEQKRLMLDLINMRTVDCFYTVTFYGALFREGDVVICMELMDTSLDK  
 FYRKVLDKNMTIPEDILGEIAVSIVRALEHLHSLKLSVIHRDVKPSNVLINKEG  
 HVKMCDFGISGYLVDSVAKTMDAGCKPYMAPERINPELNQKGYNVKSDV  
 WSLGITMIEMAILRFPYESWGTPFQQLKQVVEEPPQLPADRFSPFVD  
 FTAQCLRKNPAERMSYLELMEHPFFTLHKTKKTDIAAFVKEILGEDS

**Host:** Rabbit

**Reactivity:** Human

**Quality Control Testing:** Antibody reactive against mammalian transfected lysate.

**Storage Buffer:** In 1x PBS, pH 7.4

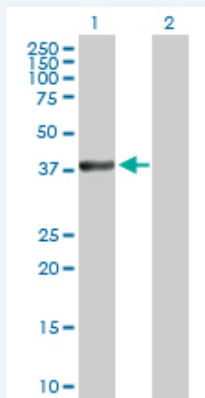
**Storage Instruction:** Store at -20°C or lower. Aliquot to avoid repeated freezing and thawing.

**MSDS:** [Download](#)

**Datasheet:** [Download](#)

### Applications

#### Western Blot (Transfected lysate)



Western Blot analysis of MAP2K3 expression in transfected 293T cell line (H00005606-T01) by MAP2K3 MaxPab polyclonal antibody.

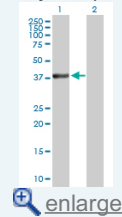
Lane 1: MAP2K3 transfected lysate(39.30 KDa).

Lane 2: Non-transfected lysate.

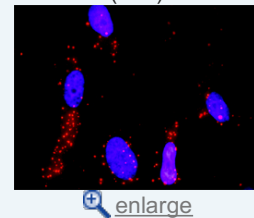
[Protocol Download](#)

### Application Image

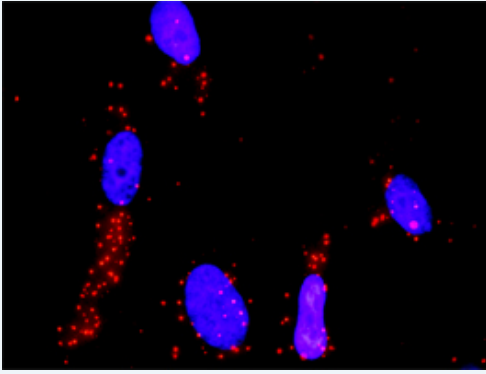
#### Western Blot (Transfected lysate)



#### In situ Proximity Ligation Assay (Cell)



## In situ Proximity Ligation Assay (Cell)



Proximity Ligation Analysis of protein-protein interactions between MAP2K3 and MAP3K4. HeLa cells were stained with anti-MAP2K3 rabbit purified polyclonal 1:1200 and anti-MAP3K4 mouse monoclonal antibody 1:50. Each red dot represents the detection of protein-protein interaction complex, and nuclei were counterstained with DAPI (blue).

### Gene Information

Entrez GeneID: [5606](#)

GeneBank [NM\\_145109.1](#)  
Accession#:

Protein [NP\\_659731.1](#)  
Accession#:

Gene Name: MAP2K3

Gene Alias: MAPKK3,MEK3,MKK3,PRKMK3

Gene Description: mitogen-activated protein kinase kinase 3

Omim ID: [602315](#)

Gene Ontology: [Hyperlink](#)

**Gene Summary:** The protein encoded by this gene is a dual specificity protein kinase that belongs to the MAP kinase kinase family. This kinase is activated by mitogenic and environmental stress, and participates in the MAP kinase-mediated signaling cascade. It phosphorylates and thus activates MAPK14/p38-MAPK. This kinase can be activated by insulin, and is necessary for the expression of glucose transporter. Expression of RAS oncogene is found to result in the accumulation of the active form of this kinase, which thus leads to the constitutive activation of MAPK14, and confers oncogenic transformation of primary cells. The inhibition of this kinase is involved in the pathogenesis of Yersinia pseudotuberculosis. Multiple alternatively spliced transcript variants that encode distinct isoforms have been reported for this gene. [provided by RefSeq]

Other Designations: MAP kinase kinase 3,MAPK/ERK kinase 3,OTTHUMP00000166044,dual specificity mitogen activated protein kinase kinase 3

### Gene Pathway

[Amyotrophic lateral sclerosis \(ALS\) Fc epsilon RI signaling pathway](#)  
[GnRH signaling pathway](#) [MAPK signaling pathway](#) [Toll-like receptor signaling pathway](#)