



SZABO SCANDIC

Part of Europa Biosite

Produktinformation



Forschungsprodukte & Biochemikalien



Zellkultur & Verbrauchsmaterial



Diagnostik & molekulare Diagnostik



Laborgeräte & Service

Weitere Information auf den folgenden Seiten!
See the following pages for more information!



Lieferung & Zahlungsart

siehe unsere [Liefer- und Versandbedingungen](#)

Zuschläge

- Mindermengenzuschlag
- Trockeneiszuschlag
- Gefahrgutzuschlag
- Expressversand

SZABO-SCANDIC HandelsgmbH

Quellenstraße 110, A-1100 Wien

T. +43(0)1 489 3961-0

F. +43(0)1 489 3961-7

mail@szabo-scandic.com

www.szabo-scandic.com

[linkedin.com/company/szaboscandic](https://www.linkedin.com/company/szaboscandic) 

MAP2K3 293T Cell Transient Overexpression Lysate(Denatured)

Catalog # : H00005606-T01

規格 : [100 uL]

[List All](#)

Specification

Transfected Cell Line: 293T

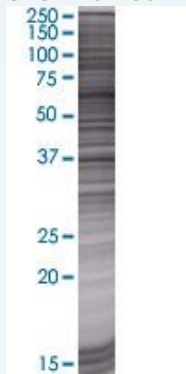
Plasmid: pCMV-MAP2K3 full-length

Host: Human

Theoretical MW (kDa): 38.28

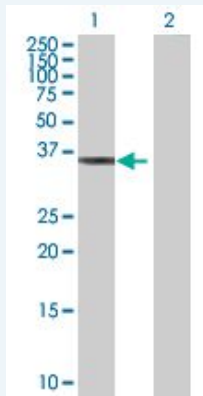
Quality Control Testing: Transient overexpression cell lysate was tested with Anti-MAP2K3 antibody ([H00005606-B01](#)) by Western Blots.

SDS-PAGE Gel



MAP2K3 transfected lysate.

Western Blot



Lane 1: MAP2K3 transfected lysate (38.28 KDa)

Lane 2: Non-transfected lysate.

Storage Buffer: 1X Sample Buffer (50 mM Tris-HCl, 2% SDS, 10% glycerol, 300 mM 2-mercaptoethanol, 0.01% Bromophenol blue)

Storage Instruction: Store at -80°C. Aliquot to avoid repeated freezing and thawing.

MSDS:  [Download](#)

Applications

Application Image

Western Blot

Western Blot

Gene Information

Entrez GeneID: [5606](#)

GeneBank Accession#: [NM_145109.1](#)

Protein Accession#: [NP_659731.1](#)

Gene Name: MAP2K3

Gene Alias: MAPKK3,MEK3,MKK3,PRKMK3

Gene Description: mitogen-activated protein kinase kinase 3

Omim ID: [602315](#)

Gene Ontology: [Hyperlink](#)

Gene Summary: The protein encoded by this gene is a dual specificity protein kinase that belongs to the MAP kinase kinase family. This kinase is activated by mitogenic and environmental stress, and participates in the MAP kinase-mediated signaling cascade. It phosphorylates and thus activates MAPK14/p38-MAPK. This kinase can be activated by insulin, and is necessary for the expression of glucose transporter. Expression of RAS oncogene is found to result in the accumulation of the active form of this kinase, which thus leads to the constitutive activation of MAPK14, and confers oncogenic transformation of primary cells. The inhibition of this kinase is involved in the pathogenesis of Yersinia pseudotuberculosis. Multiple alternatively spliced transcript variants that encode distinct isoforms have been reported for this gene. [provided by RefSeq]

Other Designations: MAP kinase kinase 3,MAPK/ERK kinase 3,OTTHUMP00000166044,dual specificity mitogen activated protein kinase kinase 3

Gene Pathway

[Amyotrophic lateral sclerosis \(ALS\) Fc epsilon RI signaling pathway](#)
[GnRH signaling pathway](#) [MAPK signaling pathway](#) [Toll-like receptor signaling pathway](#)

[服務條款](#) | [隱私權政策](#) | [著作及商標](#) | [網站地圖](#)

©2016 亞諾法生技股份有限公司 Abnova Corporation. 版權所有.