



# SZABO SCANDIC

Part of Europa Biosite

## Produktinformation



Forschungsprodukte & Biochemikalien



Zellkultur & Verbrauchsmaterial



Diagnostik & molekulare Diagnostik



Laborgeräte & Service

Weitere Information auf den folgenden Seiten!  
See the following pages for more information!



### Lieferung & Zahlungsart

siehe unsere [Liefer- und Versandbedingungen](#)

### Zuschläge

- Mindermengenzuschlag
- Trockeneiszuschlag
- Gefahrgutzuschlag
- Expressversand

### SZABO-SCANDIC HandelsgmbH

Quellenstraße 110, A-1100 Wien

T. +43(0)1 489 3961-0

F. +43(0)1 489 3961-7

[mail@szabo-scandic.com](mailto:mail@szabo-scandic.com)

[www.szabo-scandic.com](http://www.szabo-scandic.com)

[linkedin.com/company/szaboscandic](https://www.linkedin.com/company/szaboscandic) 

## MAP2K6 polyclonal antibody (A01)

Catalog # : H00005608-A01

規格 : [ 50 uL ]

List All

### Specification

**Product Description:** Mouse polyclonal antibody raised against a partial recombinant MAP2K6.

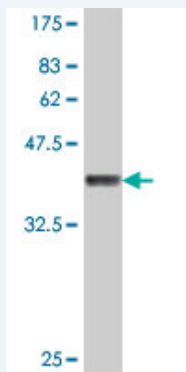
**Immunogen:** MAP2K6 (AAH12009, 231 a.a. ~ 334 a.a) partial recombinant protein with GST tag.

**Sequence:** QKGYSVKSDIWSLGITMIELAILRFPYDSWGTPFQQLKQVVEEPSQLPA DKFSAEFVDFTSQCLKKNSKERPTYPELMQHPFFTLHESKGTDVASFVK LILGD

**Host:** Mouse

**Reactivity:** Human

**Quality Control Testing:** Antibody Reactive Against Recombinant Protein.



Western Blot detection against Immunogen (37.55 KDa) .

**Storage Buffer:** 50 % glycerol

**Storage Instruction:** Store at -20°C or lower. Aliquot to avoid repeated freezing and thawing.

**MSDS:** [Download](#)

**Datasheet:** [Download](#)

### Applications

**Western Blot (Recombinant protein)**

[Protocol Download](#)

**ELISA**

### Gene Information

**Entrez GeneID:** [5608](#)

**GeneBank Accession#:** [BC012009](#)

### Application Image

Western Blot (Recombinant protein)

ELISA

**Protein Accession#:** [AAH12009](#)

**Gene Name:** MAP2K6

**Gene Alias:** MAPKK6,MEK6,MKK6,PRKMK6,SAPKK3

**Gene Description:** mitogen-activated protein kinase kinase 6

**Omim ID:** [601254](#)

**Gene Ontology:** [Hyperlink](#)

**Gene Summary:** This gene encodes a member of the dual specificity protein kinase family, which functions as a mitogen-activated protein (MAP) kinase kinase. MAP kinases, also known as extracellular signal-regulated kinases (ERKs), act as an integration point for multiple biochemical signals. This protein phosphorylates and activates p38 MAP kinase in response to inflammatory cytokines or environmental stress. As an essential component of p38 MAP kinase mediated signal transduction pathway, this gene is involved in many cellular processes such as stress induced cell cycle arrest, transcription activation and apoptosis. [provided by RefSeq]

**Other Designations:** protein kinase, mitogen-activated, kinase 6 (MAP kinase kinase 6)

#### Gene Pathway

[Amyotrophic lateral sclerosis \(ALS\) Fc epsilon RI signaling pathway](#)  
[GnRH signaling pathway](#) [MAPK signaling pathway](#) [Toll-like receptor signaling pathway](#)

#### Related Disease

[Cardiovascular Diseases](#) [Diabetes Mellitus, Type 2](#) [Edema](#) [Huntington Disease](#)  
[Huntington disease](#)