



SZABO SCANDIC

Part of Europa Biosite

Produktinformation



Forschungsprodukte & Biochemikalien



Zellkultur & Verbrauchsmaterial



Diagnostik & molekulare Diagnostik



Laborgeräte & Service

Weitere Information auf den folgenden Seiten!
See the following pages for more information!



Lieferung & Zahlungsart

siehe unsere [Liefer- und Versandbedingungen](#)

Zuschläge

- Mindermengenzuschlag
- Trockeneiszuschlag
- Gefahrgutzuschlag
- Expressversand

SZABO-SCANDIC HandelsgmbH

Quellenstraße 110, A-1100 Wien

T. +43(0)1 489 3961-0

F. +43(0)1 489 3961-7

mail@szabo-scandic.com

www.szabo-scandic.com

[linkedin.com/company/szaboscandic](https://www.linkedin.com/company/szaboscandic) 

MAP2K6 MaxPab mouse polyclonal antibody (B01) MaxPab®

Catalog # : H00005608-B01

規格 : [50 uL]

List All

Specification

Product Description: Mouse polyclonal antibody raised against a full-length human MAP2K6 protein.

Immunogen: MAP2K6 (NP_002749.2, 1 a.a. ~ 334 a.a) full-length human protein.

Sequence:
 MSQSKGKKRNPGLKIPKEAFEQPQTSSTPPRDLDSKACISIGNQNFEVKA
 DDLEPIMELGRGAYGVVEKMRHVPSGQIMAVKRIRATVNSQEQKRLMD
 LDISMRTVDCPFTVTTFYGALFREGDWICMELMDTSLDKFYKQVIDKGG
 TIPEDILGKIAVSIVKALEHLHSLKSVIHRDVKPSNMLINALGQVKMCDG
 GYLVDVSAKTIDAGCKPYMAPERINPELNQKGYSVKSDIWSLGITMIELAIL
 RFPYDSWGTPTFQQLKQVVEEPPQLPADKFSAEFVDFTSQCLKKSKE
 RPTYPELMQHPFFTLHESKGTDVASFVKLILGD

Host: Mouse

Reactivity: Human

Quality Control Testing: Antibody reactive against mammalian transfected lysate.

Storage Buffer: No additive

Storage Instruction: Store at -20°C or lower. Aliquot to avoid repeated freezing and thawing.

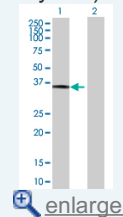
Note: For IHC and IF applications, antibody purification with Protein A will be needed prior to use.


MSDS:  [Download](#)

Datasheet:  [Download](#)

Application Image

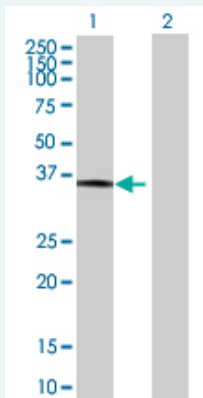
Western Blot (Transfected lysate)



 enlarge

Applications

Western Blot (Transfected lysate)



Western Blot analysis of MAP2K6 expression in transfected 293T cell line (H00005608-T01) by MAP2K6 MaxPab polyclonal antibody.

Lane 1: MAP2K6 transfected lysate(36.74 KDa).

Lane 2: Non-transfected lysate.

Gene Information

Entrez GeneID: [5608](#)

GeneBank Accession#: [NM_002758.3](#)

Protein Accession#: [NP_002749.2](#)

Gene Name: MAP2K6

Gene Alias: MAPKK6,MEK6,MKK6,PRKMK6,SAPKK3

Gene Description: mitogen-activated protein kinase kinase 6

Omim ID: [601254](#)

Gene Ontology: [Hyperlink](#)

Gene Summary: This gene encodes a member of the dual specificity protein kinase family, which functions as a mitogen-activated protein (MAP) kinase kinase. MAP kinases, also known as extracellular signal-regulated kinases (ERKs), act as an integration point for multiple biochemical signals. This protein phosphorylates and activates p38 MAP kinase in response to inflammatory cytokines or environmental stress. As an essential component of p38 MAP kinase mediated signal transduction pathway, this gene is involved in many cellular processes such as stress induced cell cycle arrest, transcription activation and apoptosis. [provided by RefSeq]

Other Designations: protein kinase, mitogen-activated, kinase 6 (MAP kinase kinase 6)

Gene Pathway

[Amyotrophic lateral sclerosis \(ALS\) Fc epsilon RI signaling pathway](#)
[GnRH signaling pathway](#) [MAPK signaling pathway](#) [Toll-like receptor signaling pathway](#)

Related Disease

[Cardiovascular Diseases](#) [Diabetes Mellitus, Type 2](#) [Edema](#) [Huntington Disease](#)
[Huntington disease](#)
