



# SZABO SCANDIC

Part of Europa Biosite

## Produktinformation



Forschungsprodukte & Biochemikalien



Zellkultur & Verbrauchsmaterial



Diagnostik & molekulare Diagnostik



Laborgeräte & Service

Weitere Information auf den folgenden Seiten!  
See the following pages for more information!



### Lieferung & Zahlungsart

siehe unsere [Liefer- und Versandbedingungen](#)

### Zuschläge

- Mindermengenzuschlag
- Trockeneiszuschlag
- Gefahrgutzuschlag
- Expressversand

### SZABO-SCANDIC HandelsgmbH

Quellenstraße 110, A-1100 Wien

T. +43(0)1 489 3961-0

F. +43(0)1 489 3961-7

[mail@szabo-scandic.com](mailto:mail@szabo-scandic.com)

[www.szabo-scandic.com](http://www.szabo-scandic.com)

[linkedin.com/company/szaboscandic](https://www.linkedin.com/company/szaboscandic) 

## MAP2K6 purified MaxPab rabbit polyclonal antibody (D01P) MaxPab®

Catalog # : H00005608-D01P

規格 : [ 100 ug ]

[List All](#)

### Specification

**Product Description:** Rabbit polyclonal antibody raised against a full-length human MAP2K6 protein.

**Immunogen:** MAP2K6 (NP\_002749.2, 1 a.a. ~ 334 a.a) full-length human protein.

**Sequence:**  
 MSQSKGKKRNPGLKIPKEAFEQPQTSSTPPRDLDSKACISIGNQNFEVKA  
 DDLEPIMELGRGAYGVVEKMRHVPSGQIMAVKRIRATVNSQEQKRLMD  
 LDISMRTVDCPFTVTFYGALFREGDWICMELMDTSLDKFYKQVIDKGQ  
 TIPEDILGKIAVSIVKALEHLHSLKSVIHRDVKPSNMLINALGQVKMCDGIS  
 GYLVDVAKTIDAGCKPYMAPERINPELNQKGYSVKSDIWSLGITMIELAIL  
 RFPYDSWGTPTFQQLKQVVEEPPQLPADKFSAEFVDFTSQCLKKSKE  
 RPTYPELMQHPFFTLHESKGTDVASFVKLILGD

**Host:** Rabbit

**Reactivity:** Human

**Quality Control Testing:** Antibody reactive against mammalian transfected lysate.

**Storage Buffer:** In 1x PBS, pH 7.4

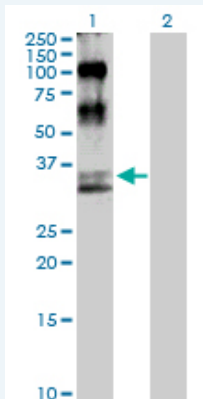
**Storage Instruction:** Store at -20°C or lower. Aliquot to avoid repeated freezing and thawing.

**MSDS:** [Download](#)

**Datasheet:** [Download](#)

### Applications

#### Western Blot (Transfected lysate)



Western Blot analysis of MAP2K6 expression in transfected 293T cell line (H00005608-T01) by MAP2K6 MaxPab polyclonal antibody.

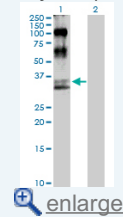
Lane 1: MAP2K6 transfected lysate(37.50 KDa).

Lane 2: Non-transfected lysate.

[Protocol Download](#)

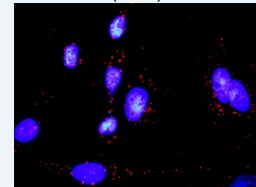
### Application Image

#### Western Blot (Transfected lysate)



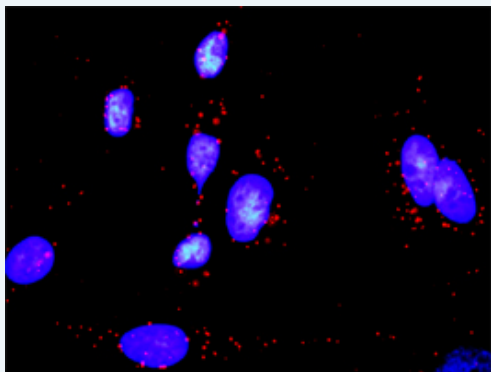
[enlarge](#)

#### In situ Proximity Ligation Assay (Cell)



[enlarge](#)

## In situ Proximity Ligation Assay (Cell)



Proximity Ligation Analysis of protein-protein interactions between MAP2K6 and GADD45A. HeLa cells were stained with anti-MAP2K6 rabbit purified polyclonal 1:1200 and anti-GADD45A mouse monoclonal antibody 1:50. Each red dot represents the detection of protein-protein interaction complex, and nuclei were counterstained with DAPI (blue).

### Gene Information

Entrez GeneID: [5608](#)

GeneBank [NM\\_002758.3](#)  
Accession#:

Protein [NP\\_002749.2](#)  
Accession#:

Gene Name: MAP2K6

Gene Alias: MAPKK6,MEK6,MKK6,PRKMK6,SAPKK3

Gene Description: mitogen-activated protein kinase kinase 6

Omim ID: [601254](#)

Gene Ontology: [Hyperlink](#)

**Gene Summary:** This gene encodes a member of the dual specificity protein kinase family, which functions as a mitogen-activated protein (MAP) kinase kinase. MAP kinases, also known as extracellular signal-regulated kinases (ERKs), act as an integration point for multiple biochemical signals. This protein phosphorylates and activates p38 MAP kinase in response to inflammatory cytokines or environmental stress. As an essential component of p38 MAP kinase mediated signal transduction pathway, this gene is involved in many cellular processes such as stress induced cell cycle arrest, transcription activation and apoptosis. [provided by RefSeq]

Other Designations: protein kinase, mitogen-activated, kinase 6 (MAP kinase kinase 6)

### Gene Pathway

[Amyotrophic lateral sclerosis \(ALS\) Fc epsilon RI signaling pathway](#)  
[GnRH signaling pathway](#) [MAPK signaling pathway](#) [Toll-like receptor signaling pathway](#)

### Related Disease

[Cardiovascular Diseases](#) [Diabetes Mellitus, Type 2](#) [Edema](#) [Huntington Disease](#)  
[Huntington disease](#)

