



# SZABO SCANDIC

Part of Europa Biosite

## Produktinformation



Forschungsprodukte & Biochemikalien



Zellkultur & Verbrauchsmaterial



Diagnostik & molekulare Diagnostik



Laborgeräte & Service

Weitere Information auf den folgenden Seiten!  
See the following pages for more information!



### Lieferung & Zahlungsart

siehe unsere [Liefer- und Versandbedingungen](#)

### Zuschläge

- Mindermengenzuschlag
- Trockeneiszuschlag
- Gefahrgutzuschlag
- Expressversand

### SZABO-SCANDIC HandelsgmbH

Quellenstraße 110, A-1100 Wien

T. +43(0)1 489 3961-0

F. +43(0)1 489 3961-7

[mail@szabo-scandic.com](mailto:mail@szabo-scandic.com)

[www.szabo-scandic.com](http://www.szabo-scandic.com)

[linkedin.com/company/szaboscandic](https://www.linkedin.com/company/szaboscandic) 



## MAP2K6 monoclonal antibody (M02), clone 2F2

Catalog # : H00005608-M02

規格 : [ 100 ug ]

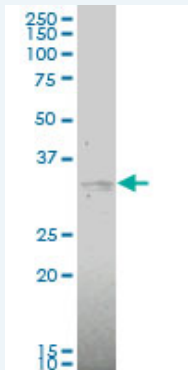
[List All](#)

### Specification

|                                 |  |
|---------------------------------|--|
| <b>Product Description:</b>     | Mouse monoclonal antibody raised against a partial recombinant MAP2K6.   |
| <b>Immunogen:</b>               | MAP2K6 (AAH12009, 231 a.a. ~ 334 a.a) partial recombinant protein with GST tag. MW of the GST tag alone is 26 KDa. |
| <b>Sequence:</b>                | QKGYSVKSDIWSLGITMIELAILRFPYDSWGTPFQQLKQVVEEPSPQLPA<br>DKFSAEFVDFTSQCLKKNSKERPTYPELMQHPFFTLHESKGTDVASFVK<br>LILGD   |
| <b>Host:</b>                    | Mouse  |
| <b>Reactivity:</b>              | Human  |
| <b>Isotype:</b>                 | IgG2a Kappa  |
| <b>Quality Control Testing:</b> | Antibody Reactive Against Recombinant Protein.   |
| <b>Storage Buffer:</b>          | In 1x PBS, pH 7.4  |
| <b>Storage Instruction:</b>     | Store at -20°C or lower. Aliquot to avoid repeated freezing and thawing.   |
| <b>MSDS:</b>                    |  <a href="#">Download</a>       |
| <b>Datasheet:</b>               |  <a href="#">Download</a>       |

### Applications

#### Western Blot (Cell lysate)



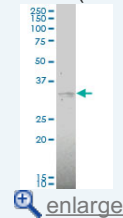
MAP2K6 monoclonal antibody (M02), clone 2F2 Western Blot analysis of MAP2K6 expression in COLO 320 HSR ( Cat # L020V1 ).

 [Protocol Download](#)

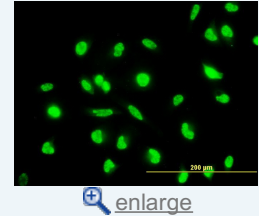
#### Immunofluorescence

### Application Image

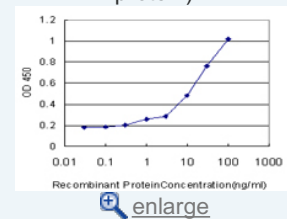
#### Western Blot (Cell lysate)



#### Immunofluorescence

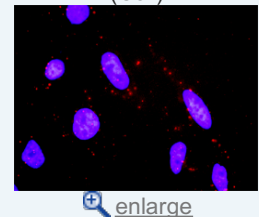


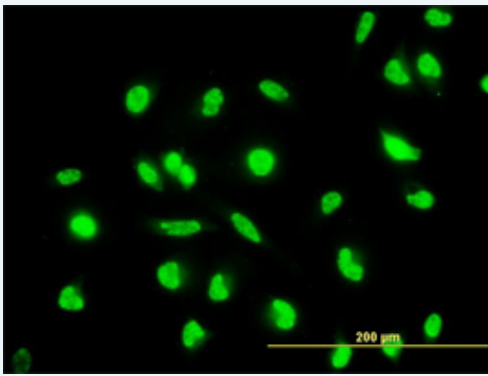
#### Sandwich ELISA (Recombinant protein)



#### ELISA

#### In situ Proximity Ligation Assay (Cell)



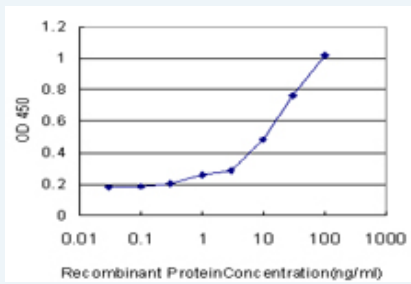


[enlarge this image](#)

Immunofluorescence of monoclonal antibody to MAP2K6 on HeLa cell. [antibody concentration 10 ug/ml]

[Protocol Download](#)

### Sandwich ELISA (Recombinant protein)

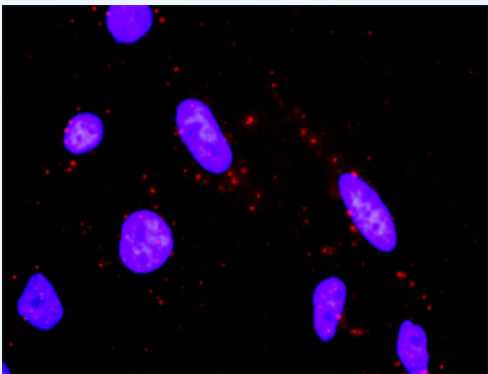


Detection limit for recombinant GST tagged MAP2K6 is approximately 0.3ng/ml as a capture antibody.

[Protocol Download](#)

### ELISA

### *In situ* Proximity Ligation Assay (Cell)



Proximity Ligation Analysis of protein-protein interactions between MAP2K3 and MAP2K6. HeLa cells were stained with anti-MAP2K3 rabbit purified polyclonal 1:1200 and anti-MAP2K6 mouse monoclonal antibody 1:50. Each red dot represents the detection of protein-protein interaction complex, and nuclei were counterstained with DAPI (blue).

### Gene Information

Entrez GeneID: [5608](#)

GeneBank [BC012009](#)  
Accession#:

Protein [AAH12009](#)  
Accession#:

Gene Name: MAP2K6

Gene Alias: MAPKK6, MEK6, MKK6, PRKMK6, SAPKK3

Gene mitogen-activated protein kinase kinase 6

**Description:**

**Omim ID:** [601254](#)

**Gene Ontology:** [Hyperlink](#)

**Gene Summary:** This gene encodes a member of the dual specificity protein kinase family, which functions as a mitogen-activated protein (MAP) kinase kinase. MAP kinases, also known as extracellular signal-regulated kinases (ERKs), act as an integration point for multiple biochemical signals. This protein phosphorylates and activates p38 MAP kinase in response to inflammatory cytokines or environmental stress. As an essential component of p38 MAP kinase mediated signal transduction pathway, this gene is involved in many cellular processes such as stress induced cell cycle arrest, transcription activation and apoptosis. [provided by RefSeq]

**Other Designations:** protein kinase, mitogen-activated, kinase 6 (MAP kinase kinase 6)

**Gene Pathway**

[Amyotrophic lateral sclerosis \(ALS\) Fc epsilon RI signaling pathway](#)  
[GnRH signaling pathway](#) [MAPK signaling pathway](#) [Toll-like receptor signaling pathway](#)

**Related Disease**

[Cardiovascular Diseases](#) [Diabetes Mellitus, Type 2](#) [Edema](#) [Huntington Disease](#)  
[Huntington disease](#)

[服務條款](#) | [隱私權政策](#) | [著作及商標](#) | [網站地圖](#)

©2016 亞諾法生技股份有限公司 Abnova Corporation. 版權所有.