



SZABO SCANDIC

Part of Europa Biosite

Produktinformation



Forschungsprodukte & Biochemikalien



Zellkultur & Verbrauchsmaterial



Diagnostik & molekulare Diagnostik



Laborgeräte & Service

Weitere Information auf den folgenden Seiten!
See the following pages for more information!



Lieferung & Zahlungsart

siehe unsere [Liefer- und Versandbedingungen](#)

Zuschläge

- Mindermengenzuschlag
- Trockeneiszuschlag
- Gefahrgutzuschlag
- Expressversand

SZABO-SCANDIC HandelsgmbH

Quellenstraße 110, A-1100 Wien

T. +43(0)1 489 3961-0

F. +43(0)1 489 3961-7

mail@szabo-scandic.com

www.szabo-scandic.com

[linkedin.com/company/szaboscandic](https://www.linkedin.com/company/szaboscandic) 

PRKY purified MaxPab mouse polyclonal antibody (B01P) MaxPab®

Catalog # : H00005616-B01P

規格 : [50 ug]

[List All](#)

Specification

Product Description: Mouse polyclonal antibody raised against a full-length human PRKY protein.

Immunogen: PRKY (NP_002751.1, 1 a.a. ~ 277 a.a) full-length human protein.

Sequence:
 MEAPGPAQAAAAESNSREVTEDAADWAPALCPSPEARSPEAPAYRLQD
 CDALVTMGTGTFGRVHLVKEKTAHFFALKVMSIPDVIRRKQEQHVHNE
 KSVLKEVSHPFILIRLFWTWHEERFLYMLMEYVPGGELFSYLRNRGHFSS
 TTGLFYSAEIIICAIEYLHSKEIVYRDLKPENILLDRDGHKLTDFGFAKKLVD
 RTWTLCGTPEYLAPEVIQSKGHGRAVDWWALGILIFEMLSGFPPFFDDN
 PFGIYQKILAGKLYFPRHLDFHVKTGRMM

Host: Mouse

Reactivity: Human

Quality Control Testing: Antibody reactive against mammalian transfected lysate.

Storage Buffer: In 1x PBS, pH 7.4

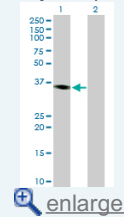
Storage Instruction: Store at -20°C or lower. Aliquot to avoid repeated freezing and thawing.

MSDS:  [Download](#)

Datasheet:  [Download](#)

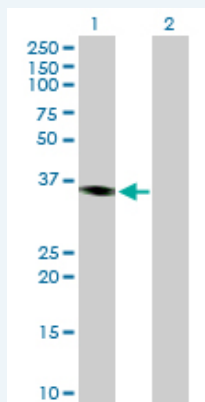
Application Image

Western Blot (Transfected lysate)



Applications

Western Blot (Transfected lysate)



Western Blot analysis of PRKY expression in transfected 293T cell line (H00005616-T01) by PRKY MaxPab polyclonal antibody.

Lane 1: PRKY transfected lysate(30.47 KDa).
 Lane 2: Non-transfected lysate.

 [Protocol Download](#)

Gene Information

Entrez GeneID: [5616](#)

GeneBank Accession#: [NM_002760.3](#)

Protein Accession#: [NP_002751.1](#)

Gene Name: PRKY

Gene Alias: -

Gene Description: protein kinase, Y-linked

Omim ID: [400008](#)

Gene Ontology: [Hyperlink](#)

Gene Summary: This gene is similar to the protein kinase, X-linked gene in the pseudoautosomal region of the X chromosome. The gene is classified as a transcribed pseudogene because it has lost a coding exon that results in all transcripts being candidates for nonsense-mediated decay (NMD) and unlikely to express a protein. Abnormal recombination between this gene and a related gene on chromosome X is a frequent cause of XX males and XY females. [provided by RefSeq]

Other Designations: OTTHUMP00000033227

Gene Pathway

[Apoptosis](#) [Calcium signaling pathway](#) [Chemokine signaling pathway](#) [Gap junction](#) [GnRH signaling pathway](#) [Hedgehog signaling pathway](#) [Insulin signaling pathway](#) [Long-term potentiation](#) [MAPK signaling pathway](#) [Melanogenesis](#) [Olfactory transduction](#) [Prion diseases](#) [Taste transduction](#) [Vascular smooth muscle contraction](#) [Vibrio cholerae infection](#) [Wnt signaling pathway](#)

Related Disease

[Genetic Predisposition to Disease](#)