



SZABO SCANDIC

Part of Europa Biosite

Produktinformation



Forschungsprodukte & Biochemikalien



Zellkultur & Verbrauchsmaterial



Diagnostik & molekulare Diagnostik



Laborgeräte & Service

Weitere Information auf den folgenden Seiten!
See the following pages for more information!



Lieferung & Zahlungsart

siehe unsere [Liefer- und Versandbedingungen](#)

Zuschläge

- Mindermengenzuschlag
- Trockeneiszuschlag
- Gefahrgutzuschlag
- Expressversand

SZABO-SCANDIC HandelsgmbH

Quellenstraße 110, A-1100 Wien

T. +43(0)1 489 3961-0

F. +43(0)1 489 3961-7

mail@szabo-scandic.com

www.szabo-scandic.com

[linkedin.com/company/szaboscandic](https://www.linkedin.com/company/szaboscandic) 

PRKY 293T Cell Transient Overexpression Lysate(Denatured)

Catalog # : H00005616-T01

規格 : [100 uL]

List All

Specification

Transfected Cell Line: 293T

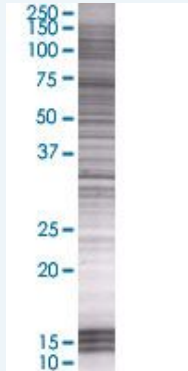
Plasmid: pCMV-PRKY full-length

Host: Human

Theoretical MW (kDa): 30.58

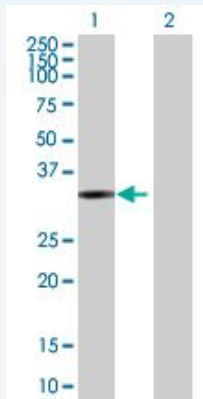
Quality Control Testing: Transient overexpression cell lysate was tested with Anti-PRKY antibody (H00005616-B01) by Western Blots.

SDS-PAGE Gel



PRKY transfected lysate.

Western Blot



Lane 1: PRKY transfected lysate (30.58 KDa)

Lane 2: Non-transfected lysate.

Storage Buffer: 1X Sample Buffer (50 mM Tris-HCl, 2% SDS, 10% glycerol, 300 mM 2-mercaptoethanol, 0.01% Bromophenol blue)

Storage Instruction: Store at -80°C. Aliquot to avoid repeated freezing and thawing.

MSDS:  [Download](#)

Applications

Application Image

Western Blot

Western Blot

Gene Information

Entrez GeneID: [5616](#)

GeneBank Accession#: [NM_002760.3](#)

Protein Accession#: [NP_002751.1](#)

Gene Name: PRKY

Gene Alias: -

Gene Description: protein kinase, Y-linked

Omim ID: [400008](#)

Gene Ontology: [Hyperlink](#)

Gene Summary: This gene is similar to the protein kinase, X-linked gene in the pseudoautosomal region of the X chromosome. The gene is classified as a transcribed pseudogene because it has lost a coding exon that results in all transcripts being candidates for nonsense-mediated decay (NMD) and unlikely to express a protein. Abnormal recombination between this gene and a related gene on chromosome X is a frequent cause of XX males and XY females. [provided by RefSeq]

Other Designations: OTTHUMP00000033227

Gene Pathway

[Apoptosis](#) [Calcium signaling pathway](#) [Chemokine signaling pathway](#) [Gap junction](#) [GnRH signaling pathway](#) [Hedgehog signaling pathway](#) [Insulin signaling pathway](#) [Long-term potentiation](#) [MAPK signaling pathway](#) [Melanogenesis](#) [Olfactory transduction](#) [Prion diseases](#) [Taste transduction](#) [Vascular smooth muscle contraction](#) [Vibrio cholerae infection](#) [Wnt signaling pathway](#)

Related Disease

[Genetic Predisposition to Disease](#)