



SZABO SCANDIC

Part of Europa Biosite

Produktinformation



Forschungsprodukte & Biochemikalien



Zellkultur & Verbrauchsmaterial



Diagnostik & molekulare Diagnostik



Laborgeräte & Service

Weitere Information auf den folgenden Seiten!
See the following pages for more information!



Lieferung & Zahlungsart

siehe unsere [Liefer- und Versandbedingungen](#)

Zuschläge

- Mindermengenzuschlag
- Trockeneiszuschlag
- Gefahrgutzuschlag
- Expressversand

SZABO-SCANDIC HandelsgmbH

Quellenstraße 110, A-1100 Wien

T. +43(0)1 489 3961-0

F. +43(0)1 489 3961-7

mail@szabo-scandic.com

www.szabo-scandic.com

[linkedin.com/company/szaboscandic](https://www.linkedin.com/company/szaboscandic) 



PRL purified MaxPab rabbit polyclonal antibody (D01P) MaxPab®

Catalog # : H00005617-D01P

規格 : [100 ug]

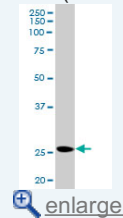
[List All](#)

Specification

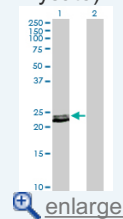
Product Description:	Rabbit polyclonal antibody raised against a full-length human PRL protein.
Immunogen:	PRL (AAH15850.1, 1 a.a. ~ 227 a.a) full-length human protein.
Sequence:	MNIKGSPWKGSLLLLLVSNLLLCQSVAPLPICPGGAARCQVTLRDLFDRA VVLSHYIHNLSEMSEFDKRYTHGRGFITKAINSCHTSSLATPEDKEQAQ QMNQKDFLSLIVSILRSWNEPLYHLVTEVRGMQEAPEAILSKAVEIEEQTK RLLEGMELVSVHPETKENEIYPVWSGLPSLQMADEESRLSAYYNLLHC LRRDSHKIDNYLKLLKCRHHNNNC
Host:	Rabbit
Reactivity:	Human, Mouse
Quality Control Testing:	Antibody reactive against mammalian transfected lysate.
Storage Buffer:	In 1x PBS, pH 7.4
Storage Instruction:	Store at -20°C or lower. Aliquot to avoid repeated freezing and thawing.
MSDS:	 Download
Datasheet:	 Download

Application Image

Western Blot (Tissue lysate)

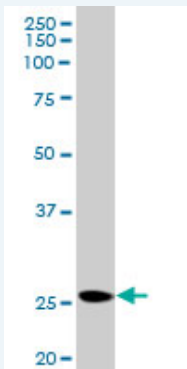


Western Blot (Transfected lysate)



Applications

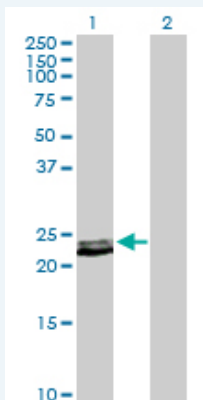
Western Blot (Tissue lysate)



PRL MaxPab rabbit polyclonal antibody. Western Blot analysis of PRL expression in mouse testis.

 [Protocol Download](#)

Western Blot (Transfected lysate)



Western Blot analysis of PRL expression in transfected 293T cell line ([H00005617-T01](#)) by PRL MaxPab polyclonal antibody.

Lane 1: PRL transfected lysate(25.90 KDa).
Lane 2: Non-transfected lysate.

 [Protocol Download](#)

Gene Information

Entrez GeneID: [5617](#)

GeneBank [NM_000948](#)
Accession#:

Protein [AAH15850.1](#)
Accession#:

Gene Name: PRL

Gene Alias: -

Gene prolactin
Description:

Omim ID: [176760](#)

Gene Ontology: [Hyperlink](#)

Other OTTHUMP00000017727
Designations:

Gene Pathway

[Cytokine-cytokine receptor interaction](#) [Jak-STAT signaling pathway](#)
[Neuroactive ligand-receptor interaction](#)

Related Disease

[Abortion, Habitual](#) [Abortion, Spontaneous](#) [Arthritis, Juvenile Rheumatoid](#)
[Arthritis, Rheumatoid](#) [Asperger Syndrome](#) [Autistic Disorder](#) [Autoimmune Diseases](#)
[Breast cancer](#) [Breast Neoplasms](#) [Disease Progression](#) [Fibroadenoma](#)
[Genetic Predisposition to Disease](#) [Hepatitis C](#) [Hyperparathyroidism, Secondary](#)
[Infertility, Female](#) [Lupus Erythematosus, Systemic](#) [Lymphoma, Non-Hodgkin](#)
[Mental Disorders](#) [Multiple Sclerosis](#)

... see more