



SZABO SCANDIC

Part of Europa Biosite

Produktinformation



Forschungsprodukte & Biochemikalien



Zellkultur & Verbrauchsmaterial



Diagnostik & molekulare Diagnostik



Laborgeräte & Service

Weitere Information auf den folgenden Seiten!
See the following pages for more information!



Lieferung & Zahlungsart

siehe unsere [Liefer- und Versandbedingungen](#)

Zuschläge

- Mindermengenzuschlag
- Trockeneiszuschlag
- Gefahrgutzuschlag
- Expressversand

SZABO-SCANDIC HandelsgmbH

Quellenstraße 110, A-1100 Wien

T. +43(0)1 489 3961-0

F. +43(0)1 489 3961-7

mail@szabo-scandic.com

www.szabo-scandic.com

[linkedin.com/company/szaboscandic](https://www.linkedin.com/company/szaboscandic) 

PRL monoclonal antibody (M04), clone 1A8

Catalog # : H00005617-M04

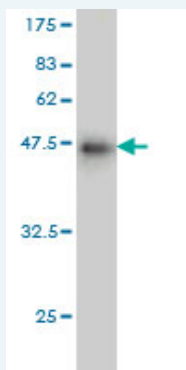
規格 : [100 ug]

[List All](#)

Specification

Product Description:	Mouse monoclonal antibody raised against a full length recombinant PRL.
Immunogen:	PRL (AAH15850, 29 a.a. ~ 227 a.a) full-length recombinant protein with GST tag. MW of the GST tag alone is 26 KDa.
Sequence:	LPICPGGAARCQVTLRDLFDRAVLSHYIHNLSSEMFSEFDKRYTHGRG FITKAINSCHTSSLATPEDKEQAQMQNPKDFLSLIVSILRSWNEPLYHLVT EVRGMQEAPAILSKAVEIEEQTKRLLGEMELVSVQVHPETKENEIYPVWS GLPSLQMADEESRLSAYYNLLHCLRRDSHKIDNYLKLLKCRHHNNNC
Host:	Mouse
Reactivity:	Human
Isotype:	IgG2a Kappa

Quality Control Testing: Antibody Reactive Against Recombinant Protein.



Western Blot detection against Immunogen (47.63 KDa) .

Storage Buffer: In 1x PBS, pH 7.4

Storage Instruction: Store at -20°C or lower. Aliquot to avoid repeated freezing and thawing.

MSDS: [Download](#)

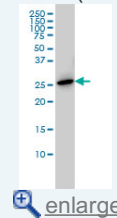
Datasheet: [Download](#)

Applications

Western Blot (Cell lysate)

Application Image

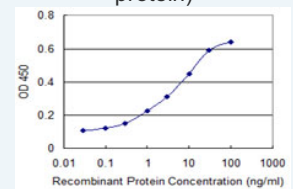
Western Blot (Cell lysate)



[enlarge](#)

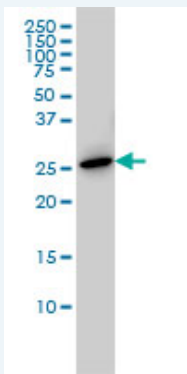
Western Blot (Recombinant protein)

Sandwich ELISA (Recombinant protein)



[enlarge](#)

ELISA



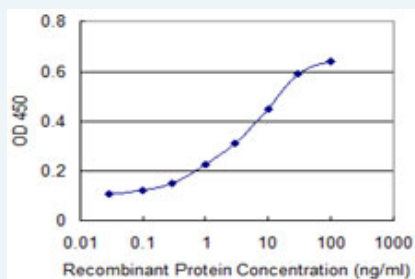
PRL monoclonal antibody (M04), clone 1A8 Western Blot analysis of PRL expression in Hela S3 NE (Cat # L013V3).

[Protocol Download](#)

Western Blot (Recombinant protein)

[Protocol Download](#)

Sandwich ELISA (Recombinant protein)



Detection limit for recombinant GST tagged PRL is approximately 0.3ng/ml as a capture antibody.

[Protocol Download](#)

ELISA

Gene Information

Entrez GeneID: [5617](#)

GeneBank [BC015850](#)

Accession#:

Protein [AAH15850](#)

Accession#:

Gene Name: PRL

Gene Alias: -

Gene prolactin

Description:

Omim ID: [176760](#)

Gene Ontology: [Hyperlink](#)

Other OTTHUMP00000017727

Designations:

Gene Pathway

[Cytokine-cytokine receptor interaction](#) [Jak-STAT signaling pathway](#)

[Neuroactive ligand-receptor interaction](#)

Related Disease

[Abortion](#), [Habitual Abortion](#), [Spontaneous Arthritis](#), [Juvenile Rheumatoid Arthritis](#), [Rheumatoid Asperger Syndrome](#), [Autistic Disorder](#), [Autoimmune Diseases](#), [Breast cancer](#), [Breast Neoplasms](#), [Disease Progression](#), [Fibroadenoma](#), [Genetic Predisposition to Disease](#), [Hepatitis C](#), [Hyperparathyroidism](#), [Secondary Infertility](#), [Female Lupus Erythematosus](#), [Systemic Lymphoma](#), [Non-Hodgkin Mental Disorders](#), [Multiple Sclerosis](#)

[... see more](#)

[服務條款](#) | [隱私權政策](#) | [著作及商標](#) | [網站地圖](#)

©2016 亞諾法生技股份有限公司 Abnova Corporation. 版權所有.