



SZABO SCANDIC

Part of Europa Biosite

Produktinformation



Forschungsprodukte & Biochemikalien



Zellkultur & Verbrauchsmaterial



Diagnostik & molekulare Diagnostik



Laborgeräte & Service

Weitere Information auf den folgenden Seiten!
See the following pages for more information!



Lieferung & Zahlungsart

siehe unsere [Liefer- und Versandbedingungen](#)

Zuschläge

- Mindermengenzuschlag
- Trockeneiszuschlag
- Gefahrgutzuschlag
- Expressversand

SZABO-SCANDIC HandelsgmbH

Quellenstraße 110, A-1100 Wien

T. +43(0)1 489 3961-0

F. +43(0)1 489 3961-7

mail@szabo-scandic.com

www.szabo-scandic.com

[linkedin.com/company/szaboscandic](https://www.linkedin.com/company/szaboscandic) 

PRLR monoclonal antibody (M02), clone 1E4

Catalog # : H00005618-M02

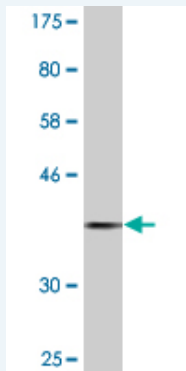
規格 : [100 ug]

[List All](#)

Specification

Product Description:	Mouse monoclonal antibody raised against a partial recombinant PRLR.
Immunogen:	PRLR (NP_000940.1, 371 a.a. ~ 479 a.a) partial recombinant protein with GST tag. MW of the GST tag alone is 26 KDa.
Sequence:	PSTFYDPEVIEKPENPETTHTWDPQCISMEGKIPYFHAGGSKCSTWPLP QPSQHNPSSYHNITDVCELAVGPAGAPATLLNEAGKDALKSSQTIKSRE EGKATQQREV
Host:	Mouse
Reactivity:	Human
Isotype:	IgG2b Kappa

Quality Control Testing: Antibody Reactive Against Recombinant Protein.



Western Blot detection against Immunogen (37.73 KDa) .

Storage Buffer: In 1x PBS, pH 7.4

Storage Instruction: Store at -20°C or lower. Aliquot to avoid repeated freezing and thawing.

MSDS: [Download](#)

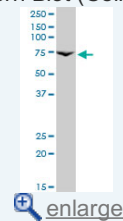
Datasheet: [Download](#)

Applications

Western Blot (Cell lysate)

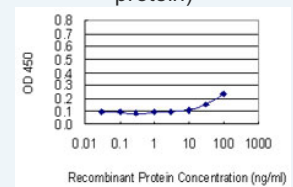
Application Image

Western Blot (Cell lysate)



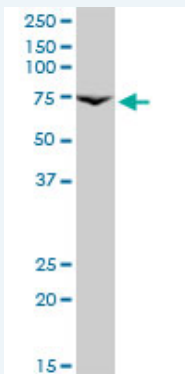
Western Blot (Recombinant protein)

Sandwich ELISA (Recombinant protein)



[enlarge](#)

ELISA



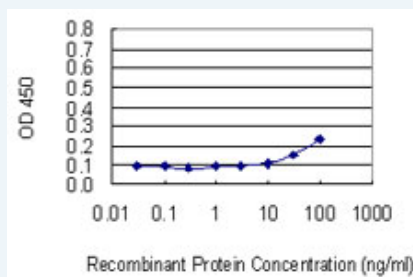
PRLR monoclonal antibody (M02), clone 1E4. Western Blot analysis of PRLR expression in A-431(Cat # L015V1).

[Protocol Download](#)

Western Blot (Recombinant protein)

[Protocol Download](#)

Sandwich ELISA (Recombinant protein)



Detection limit for recombinant GST tagged PRLR is 10 ng/ml as a capture antibody.

[Protocol Download](#)

ELISA

Gene Information

Entrez GeneID: [5618](#)

GeneBank [NM_000949](#)

Accession#:

Protein [NP_000940.1](#)

Accession#:

Gene Name: PRLR

Gene Alias: hPRLrI

Gene Description: prolactin receptor

Omim ID: [176761](#)

Gene Ontology: [Hyperlink](#)

Other Designations: OTTHUMP00000115998,delta 4-SF1b truncated prolactin receptor,delta 4-delta 7/11 truncated prolactin receptor,hPRL receptor,prolactin receptor delta 7/11,secreted prolactin binding protein

Gene Pathway

[Cytokine-cytokine receptor interaction](#) [Jak-STAT signaling pathway](#)
[Neuroactive ligand-receptor interaction](#)

Related Disease

[Abortion, Habitual](#) [Asperger Syndrome](#) [Autistic Disorder](#) [Autoimmune Diseases](#)
[Breast cancer](#) [Breast Neoplasms](#) [Fibroadenoma](#) [Genetic Predisposition to Disease](#)
[Infertility, Female](#) [Lupus Erythematosus, Systemic](#) [Lymphoma, Non-Hodgkin](#)
[Mental Disorders](#) [Multiple Sclerosis](#) [Obesity](#) [Ovarian Failure, Premature](#)
[Polycystic Ovary Syndrome](#) [Primary Ovarian Insufficiency](#) [Prostate cancer](#)
[Prostatic Neoplasms](#)

[... see more](#)

[服務條款](#) | [隱私權政策](#) | [著作及商標](#) | [網站地圖](#)

©2016 亞諾法生技股份有限公司 Abnova Corporation. 版權所有.