



SZABO SCANDIC

Part of Europa Biosite

Produktinformation



Forschungsprodukte & Biochemikalien



Zellkultur & Verbrauchsmaterial



Diagnostik & molekulare Diagnostik



Laborgeräte & Service

Weitere Information auf den folgenden Seiten!
See the following pages for more information!



Lieferung & Zahlungsart

siehe unsere [Liefer- und Versandbedingungen](#)

Zuschläge

- Mindermengenzuschlag
- Trockeneiszuschlag
- Gefahrgutzuschlag
- Expressversand

SZABO-SCANDIC HandelsgmbH

Quellenstraße 110, A-1100 Wien

T. +43(0)1 489 3961-0

F. +43(0)1 489 3961-7

mail@szabo-scandic.com

www.szabo-scandic.com

[linkedin.com/company/szaboscandic](https://www.linkedin.com/company/szaboscandic) 

PROC (Human) Matched Antibody Pair

Catalog # : H00005624-AP51

規格 : [1 Set]

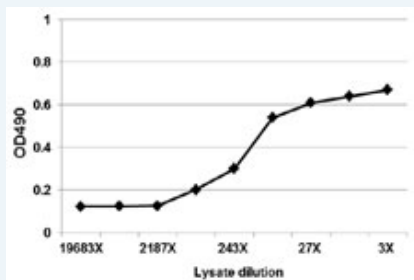
[List All](#)

Specification

Product Description: This antibody pair set comes with matched antibody pair to detect and quantify protein level of human PROC.

Reactivity: Human

Quality Control Testing: Standard curve using PROC 293T overexpression lysate (non-denatured) as an analyte.



Sandwich ELISA detection sensitivity ranging from approximately 729x to 9x dilution of the PROC 293T overexpression lysate (non-denatured).

Supplied Product: Antibody pair set content:
 1. Capture antibody: mouse monoclonal anti-PROC, IgG1 Kappa (100 ug)
 2. Detection antibody: rabbit purified polyclonal anti-PROC (50 ug)
 *Reagents are sufficient for at least 3-5 x 96 well plates using recommended protocols.

Storage Instruction: Store reagents of the antibody pair set at -20°C or lower. Please aliquot to avoid repeated freeze thaw cycle. Reagents should be returned to -20°C storage immediately after use.

MSDS:  [Download](#)

Applications

ELISA Pair (Transfected lysate)

 [Protocol Download](#)

Gene Information

Entrez GeneID: [5624](#)

Gene Name: PROC

Gene Alias: PC,PROC1

Gene Description: protein C (inactivator of coagulation factors Va and VIIIa)

Omim ID: [176860](#)

Gene Ontology: [Hyperlink](#)

Application Image

ELISA Pair (Transfected lysate)

Gene Summary: The PROC gene encodes protein C (EC 3.4.21.69), a vitamin K-dependent plasma glycoprotein that is a key component of the anticoagulant system. Protein C is cleaved to its activated form, 'activated protein C' (APC) on endothelial cells by the thrombin-thrombomodulin complex (MIM 176930; MIM 188040) and then acts as a serine protease to degrade the activated forms of coagulation factors V (F5; MIM 612309) and VIII (F8; see MIM 306700). Protein S (PROS1; MIM 176880), also a vitamin K-dependent plasma protein, functions as a cofactor to activated protein C.[supplied by OMIM

Other -
Designations:

Gene Pathway

[Complement and coagulation cascades](#)

Related Disease

[Acute Disease](#) [Cadaver](#) [Cardiovascular Diseases](#) [Chorioamnionitis](#)
[Coronary Artery Disease](#) [Coronary Disease](#) [Diabetes Mellitus, Type 2](#) [Edema](#)
[Fetal Membranes, Premature Rupture](#) [Genetic Predisposition to Disease](#) [Inflammation](#)
[Kidney Failure, Chronic](#) [Meningococcal Infections](#) [Multiple Organ Failure](#)
[Obstetric Labor, Premature](#) [Postoperative Complications](#) [Pre-Eclampsia](#)
[Pregnancy Complications, Hematologic](#) [Premature Birth](#)

... see more

[服務條款](#) | [隱私權政策](#) | [著作及商標](#) | [網站地圖](#)

©2016 亞諾法生技股份有限公司 Abnova Corporation. 版權所有.