



# SZABO SCANDIC

Part of Europa Biosite

## Produktinformation



Forschungsprodukte & Biochemikalien



Zellkultur & Verbrauchsmaterial



Diagnostik & molekulare Diagnostik



Laborgeräte & Service

Weitere Information auf den folgenden Seiten!  
See the following pages for more information!



### Lieferung & Zahlungsart

siehe unsere [Liefer- und Versandbedingungen](#)

### Zuschläge

- Mindermengenzuschlag
- Trockeneiszuschlag
- Gefahrgutzuschlag
- Expressversand

### SZABO-SCANDIC HandelsgmbH

Quellenstraße 110, A-1100 Wien

T. +43(0)1 489 3961-0

F. +43(0)1 489 3961-7

[mail@szabo-scandic.com](mailto:mail@szabo-scandic.com)

[www.szabo-scandic.com](http://www.szabo-scandic.com)

[linkedin.com/company/szaboscandic](https://www.linkedin.com/company/szaboscandic) 

**PROC MaxPab mouse polyclonal antibody (B01)** MaxPab®

Catalog # : H00005624-B01

規格 : [ 50 uL ]

[List All](#)

**Specification**

**Product Description:** Mouse polyclonal antibody raised against a full-length human PROC protein.

**Immunogen:** PROC (NP\_000303, 1 a.a. ~ 461 a.a) full-length human protein.

**Sequence:**  
 MWQLTLLLLFVATWGISGTPAPLDSVFSSESAHQVLRIRKRANSFLEEL  
 RHSSLERECIEEICDFEEAKEIFQNVDDTLAFWSKHVDGDQCLVPLEHP  
 CASLCCGHGTCIDGIGSFSCDCRSGWEGRFQREVSFLNCSLDNGGCT  
 HYCLEEVGWRRCSAPGYKLGDDLLQCHPAVKFPCGRPWKRMEKKRS  
 HLKRDTEQEDQVDPRLIDGKMTRRGDSPWQVLLDSKKKLACGAVLIH  
 PSWVLTAAHCMDESKLLVRLGEYDLRRWEKWELDLDIKEVFVHPNYSK  
 STTDNDIALLLHAQPATLSQTIPICLPDSGLAERLNQAGQETLVTGWG  
 YHSSREKEAKRNRTFVLNFIKIPVPHNECSEVMSNMVSENMLCAGILGD  
 RQDACEGDSGGPMVASFHGTWFLVGLVSWGEGCGLLNHYGVYTKVS  
 RYLDWIHGHIRDKEAPQKSWAP

**Host:** Mouse

**Reactivity:** Human

**Quality Control Testing:** Antibody reactive against mammalian transfected lysate.

**Storage Buffer:** No additive

**Storage Instruction:** Store at -20°C or lower. Aliquot to avoid repeated freezing and thawing.

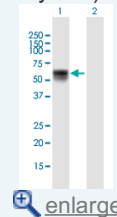
**Note:** For IHC and IF applications, antibody purification with Protein A will be needed prior to use.

**MSDS:** [Download](#)

**Datasheet:** [Download](#)

**Application Image**

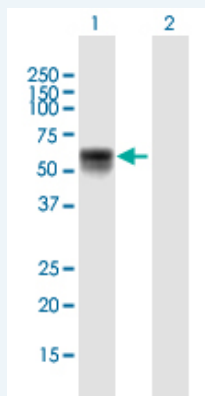
Western Blot (Transfected lysate)



[enlarge](#)

**Applications**

Western Blot (Transfected lysate)



Western Blot analysis of PROC expression in transfected 293T cell line (H00005624-T01) by PROC MaxPab polyclonal antibody.

Lane 1: PROC transfected lysate(50.71 KDa).  
Lane 2: Non-transfected lysate.

 [Protocol Download](#)

---

## Gene Information

---

**Entrez GeneID:** [5624](#)

**GeneBank  
Accession#:** [NM\\_000312](#)

**Protein  
Accession#:** [NP\\_000303](#)

**Gene Name:** PROC

**Gene Alias:** PC,PROC1

**Gene  
Description:** protein C (inactivator of coagulation factors Va and VIIIa)

**Omim ID:** [176860](#)

**Gene Ontology:** [Hyperlink](#)

**Gene Summary:** The PROC gene encodes protein C (EC 3.4.21.69), a vitamin K-dependent plasma glycoprotein that is a key component of the anticoagulant system. Protein C is cleaved to its activated form, 'activated protein C' (APC) on endothelial cells by the thrombin-thrombomodulin complex (MIM 176930; MIM 188040) and then acts as a serine protease to degrade the activated forms of coagulation factors V (F5; MIM 612309) and VIII (F8; see MIM 306700). Protein S (PROS1; MIM 176880), also a vitamin K-dependent plasma protein, functions as a cofactor to activated protein C.[supplied by OMIM

**Other  
Designations:** -

---

## Gene Pathway

---

[Complement and coagulation cascades](#)

---

## Related Disease

---

[Acute Disease](#) [Cadaver](#) [Cardiovascular Diseases](#) [Chorioamnionitis](#)  
[Coronary Artery Disease](#) [Coronary Disease](#) [Diabetes Mellitus, Type 2](#) [Edema](#)  
[Fetal Membranes, Premature Rupture](#) [Genetic Predisposition to Disease](#) [Inflammation](#)  
[Kidney Failure, Chronic Meningococcal Infections](#) [Multiple Organ Failure](#)  
[Obstetric Labor, Premature](#) [Postoperative Complications](#) [Pre-Eclampsia](#)  
[Pregnancy Complications, Hematologic](#) [Premature Birth](#)

... see more