



SZABO SCANDIC

Part of Europa Biosite

Produktinformation



Forschungsprodukte & Biochemikalien



Zellkultur & Verbrauchsmaterial



Diagnostik & molekulare Diagnostik



Laborgeräte & Service

Weitere Information auf den folgenden Seiten!
See the following pages for more information!



Lieferung & Zahlungsart

siehe unsere [Liefer- und Versandbedingungen](#)

Zuschläge

- Mindermengenzuschlag
- Trockeneiszuschlag
- Gefahrgutzuschlag
- Expressversand

SZABO-SCANDIC HandelsgmbH

Quellenstraße 110, A-1100 Wien

T. +43(0)1 489 3961-0

F. +43(0)1 489 3961-7

mail@szabo-scandic.com

www.szabo-scandic.com

[linkedin.com/company/szaboscandic](https://www.linkedin.com/company/szaboscandic) 

PROC 293T Cell Transient Overexpression Lysate(Denatured)

Catalog # : H00005624-T01

規格 : [100 uL]

List All

Specification

Transfected Cell Line: 293T

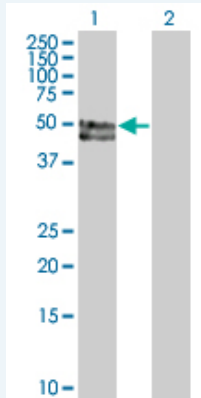
Plasmid: pCMV-PROC full-length

Host: Human

Theoretical MW (kDa): 50.82

Quality Control Testing: Transient overexpression cell lysate was tested with Anti-PROC antibody (H00005624-B01) by Western Blots.

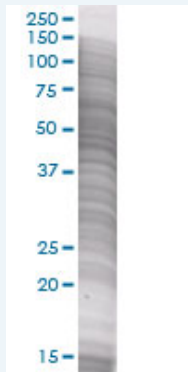
Western Blot



Lane 1: PROC transfected lysate (52.1 KDa)

Lane 2: Non-transfected lysate.

SDS-PAGE Gel



PROC transfected lysate.

Storage Buffer: 1X Sample Buffer (50 mM Tris-HCl, 2% SDS, 10% glycerol, 300 mM 2-mercaptoethanol, 0.01% Bromophenol blue)

Storage Instruction: Store at -80°C. Aliquot to avoid repeated freezing and thawing.

MSDS:  [Download](#)

Applications

Application Image

Western Blot

Western Blot

Gene Information

Entrez GeneID: [5624](#)

GeneBank [NM_000312](#)
Accession#:

Protein [NP_000303](#)
Accession#:

Gene Name: PROC

Gene Alias: PC,PROC1

Gene Description: protein C (inactivator of coagulation factors Va and VIIIa)

Omim ID: [176860](#)

Gene Ontology: [Hyperlink](#)

Gene Summary: The PROC gene encodes protein C (EC 3.4.21.69), a vitamin K-dependent plasma glycoprotein that is a key component of the anticoagulant system. Protein C is cleaved to its activated form, 'activated protein C' (APC) on endothelial cells by the thrombin-thrombomodulin complex (MIM 176930; MIM 188040) and then acts as a serine protease to degrade the activated forms of coagulation factors V (F5; MIM 612309) and VIII (F8; see MIM 306700). Protein S (PROS1; MIM 176880), also a vitamin K-dependent plasma protein, functions as a cofactor to activated protein C.[supplied by OMIM

Other Designations: -

Gene Pathway

[Complement and coagulation cascades](#)

Related Disease

[Acute Disease](#) [Cadaver](#) [Cardiovascular Diseases](#) [Chorioamnionitis](#)
[Coronary Artery Disease](#) [Coronary Disease](#) [Diabetes Mellitus, Type 2](#) [Edema](#)
[Fetal Membranes, Premature Rupture](#) [Genetic Predisposition to Disease](#) [Inflammation](#)
[Kidney Failure, Chronic](#) [Meningococcal Infections](#) [Multiple Organ Failure](#)
[Obstetric Labor, Premature](#) [Postoperative Complications](#) [Pre-Eclampsia](#)
[Pregnancy Complications, Hematologic](#) [Premature Birth](#)

... see more