



SZABO SCANDIC

Part of Europa Biosite

Produktinformation



Forschungsprodukte & Biochemikalien



Zellkultur & Verbrauchsmaterial



Diagnostik & molekulare Diagnostik



Laborgeräte & Service

Weitere Information auf den folgenden Seiten!
See the following pages for more information!



Lieferung & Zahlungsart

siehe unsere [Liefer- und Versandbedingungen](#)

Zuschläge

- Mindermengenzuschlag
- Trockeneiszuschlag
- Gefahrgutzuschlag
- Expressversand

SZABO-SCANDIC HandelsgmbH

Quellenstraße 110, A-1100 Wien

T. +43(0)1 489 3961-0

F. +43(0)1 489 3961-7

mail@szabo-scandic.com

www.szabo-scandic.com

[linkedin.com/company/szaboscandic](https://www.linkedin.com/company/szaboscandic) 

PRODH polyclonal antibody (A01)

Catalog # : H00005625-A01

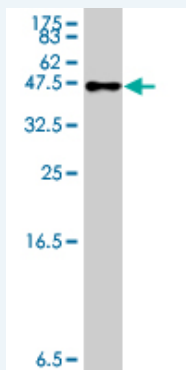
規格 : [50 uL]

List All

Specification

Product Description:	Mouse polyclonal antibody raised against a partial recombinant PRODH.
Immunogen:	PRODH (NP_057419, 441 a.a. ~ 540 a.a) partial recombinant protein with GST tag.
Sequence:	LVRGAYLAQERARAAEIGYEDPINPTYEATNAMYHRCLDYVLEELKHNAK AKVMVASHNEDTVRFALRRMEELGLHPADHRVYFGQLLGMCQDISFPL GQ
Host:	Mouse
Reactivity:	Human

Quality Control Testing: Antibody Reactive Against Recombinant Protein.



Western Blot detection against Immunogen (11.11 kDa) .

Storage Buffer: 50 % glycerol

Storage Instruction: Store at -20°C or lower. Aliquot to avoid repeated freezing and thawing.

MSDS: [Download](#)

Datasheet: [Download](#)

Applications

Western Blot (Recombinant protein)

[Protocol Download](#)

ELISA

Gene Information

Entrez GeneID: [5625](#)

GeneBank Accession#: [NM_016335](#)

Protein Accession#: [NP_057419](#)

Gene Name: PRODH

Gene Alias: FLJ33744,HSPOX2,MGC148078,MGC148079,PIG6,POX,PRODH1,PRODH2,SCZD4,TP53I6

Gene Description: proline dehydrogenase (oxidase) 1

Omim ID: [239500](#), [606810](#)

Gene Ontology: [Hyperlink](#)

Gene Summary: The protein encoded by this gene is a mitochondrial proline dehydrogenase that catalyzes the first step in proline degradation. Defects in this gene are a cause of hyperprolinemia type 1 and possibly susceptibility to schizophrenia 4 (SCZD4). The gene is located on chromosome 22q11.21, a region which has also been associated with the contiguous gene deletion syndromes DiGeorge syndrome and CATCH22 syndrome. [provided by RefSeq]

Other Designations: OTTHUMP00000196495,proline dehydrogenase 1,proline oxidase 2,proline oxidase, mitochondrial,tumor protein p53 inducible protein 6

Gene Pathway

[Arginine and proline metabolism](#) [Metabolic pathways](#)

Related Disease

[Amino Acid Metabolism](#), [Inborn Errors](#) [Autistic Disorder](#) [Bipolar Disorder](#) [Cognition](#) [DiGeorge Syndrome](#) [DiGeorge syndrome](#) [Dominance](#), [Cerebral](#) [Genetic Predisposition to Disease](#) [Memory](#) [Memory, Short-Term](#) [Mental Disorders](#) [Mental Retardation](#) [Psychotic Disorders](#) [Schizophrenia](#) [Schizophrenia](#) [Schizophrenic Psychology](#) [Schizotypal Personality Disorder](#) [Startle Reaction](#) [Verbal Learning](#)

[服務條款](#) | [隱私權政策](#) | [著作及商標](#) | [網站地圖](#)

©2016 亞諾法生技股份有限公司 Abnova Corporation. 版權所有.