



# SZABO SCANDIC

Part of Europa Biosite

## Produktinformation



Forschungsprodukte & Biochemikalien



Zellkultur & Verbrauchsmaterial



Diagnostik & molekulare Diagnostik



Laborgeräte & Service

Weitere Information auf den folgenden Seiten!  
See the following pages for more information!



### Lieferung & Zahlungsart

siehe unsere [Liefer- und Versandbedingungen](#)

### Zuschläge

- Mindermengenzuschlag
- Trockeneiszuschlag
- Gefahrgutzuschlag
- Expressversand

### SZABO-SCANDIC HandelsgmbH

Quellenstraße 110, A-1100 Wien

T. +43(0)1 489 3961-0

F. +43(0)1 489 3961-7

[mail@szabo-scandic.com](mailto:mail@szabo-scandic.com)

[www.szabo-scandic.com](http://www.szabo-scandic.com)

[linkedin.com/company/szaboscandic](https://www.linkedin.com/company/szaboscandic) 

## PRODH monoclonal antibody (M01), clone 3A9

Catalog # : H00005625-M01

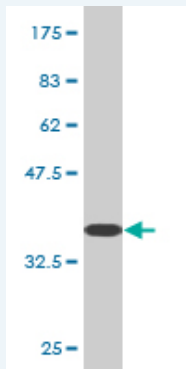
規格 : [ 100 ug ]

[List All](#)

### Specification

|                             |                                                                                                                    |
|-----------------------------|--------------------------------------------------------------------------------------------------------------------|
| <b>Product Description:</b> | Mouse monoclonal antibody raised against a partial recombinant PRODH.                                              |
| <b>Immunogen:</b>           | PRODH (NP_057419, 441 a.a. ~ 540 a.a) partial recombinant protein with GST tag. MW of the GST tag alone is 26 KDa. |
| <b>Sequence:</b>            | LVRGAYLAQERARAAEIGYEDPINPTYEATNAMYHRCLDYVLEELKHNAK<br>AKVMVASHNEDTVRFALRRMEELGLHPADHRVYFGQLLGMCDAQISFPL<br>GQ      |
| <b>Host:</b>                | Mouse                                                                                                              |
| <b>Reactivity:</b>          | Human                                                                                                              |
| <b>Isotype:</b>             | IgG2a Kappa                                                                                                        |

**Quality Control Testing:** Antibody Reactive Against Recombinant Protein.



Western Blot detection against Immunogen (36.74 KDa) .

**Storage Buffer:** In 1x PBS, pH 7.4

**Storage Instruction:** Store at -20°C or lower. Aliquot to avoid repeated freezing and thawing.

**MSDS:** [Download](#)

**Datasheet:** [Download](#)

### Applications

**Western Blot (Recombinant protein)**

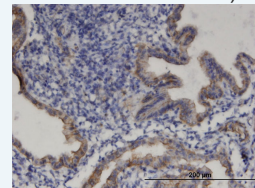
[Protocol Download](#)

**Immunohistochemistry (Formalin/PFA-fixed paraffin-embedded sections)**

### Application Image

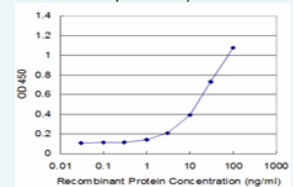
Western Blot (Recombinant protein)

Immunohistochemistry (Formalin/PFA-fixed paraffin-embedded sections)



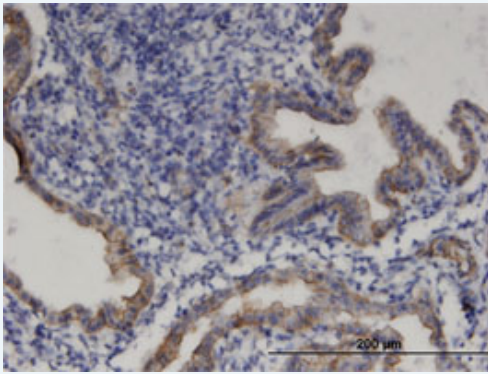
[enlarge](#)

Sandwich ELISA (Recombinant protein)



[enlarge](#)

ELISA

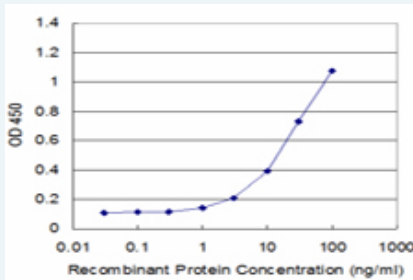


[enlarge this image](#)

Immunoperoxidase of monoclonal antibody to PRODH on formalin-fixed paraffin-embedded human endometrium. [antibody concentration 3 ug/ml]

[Protocol Download](#)

### Sandwich ELISA (Recombinant protein)



Detection limit for recombinant GST tagged PRODH is approximately 1ng/ml as a capture antibody.

[Protocol Download](#)

### ELISA

#### Gene Information

Entrez GeneID: [5625](#)

GeneBank [NM\\_016335](#)

Accession#:

Protein [NP\\_057419](#)

Accession#:

Gene Name: PRODH

Gene Alias: FLJ33744,HSPOX2,MGC148078,MGC148079,PIG6,POX,PRODH1,PRODH2,SCZD4,TP53I6

Gene proline dehydrogenase (oxidase) 1

Description:

Omim ID: [239500](#), [606810](#)

Gene Ontology: [Hyperlink](#)

**Gene Summary:** The protein encoded by this gene is a mitochondrial proline dehydrogenase that catalyzes the first step in proline degradation. Defects in this gene are a cause of hyperprolinemia type 1 and possibly susceptibility to schizophrenia 4 (SCZD4). The gene is located on chromosome 22q11.21, a region which has also been associated with the contiguous gene deletion syndromes DiGeorge syndrome and CATCH22 syndrome. [provided by RefSeq]

**Other Designations:** OTTHUMP00000196495,proline dehydrogenase 1,proline oxidase 2,proline oxidase, mitochondrial,tumor protein p53 inducible protein 6

## Gene Pathway

---

[Arginine and proline metabolism](#) [Metabolic pathways](#)

## Related Disease

---

[Amino Acid Metabolism, Inborn Errors](#) [Autistic Disorder](#) [Bipolar Disorder](#) [Cognition](#)  
[DiGeorge Syndrome](#) [DiGeorge syndrome](#) [Dominance, Cerebral](#)  
[Genetic Predisposition to Disease](#) [Memory](#) [Memory, Short-Term](#) [Mental Disorders](#)  
[Mental Retardation](#) [Psychotic Disorders](#) [Schizophrenia](#) [Schizophrenia](#)  
[Schizophrenic Psychology](#) [Schizotypal Personality Disorder](#) [Startle Reaction](#)  
[Verbal Learning](#)

---

[服務條款](#) | [隱私權政策](#) | [著作及商標](#) | [網站地圖](#)

©2016 亞諾法生技股份有限公司 Abnova Corporation. 版權所有.