



SZABO SCANDIC

Part of Europa Biosite

Produktinformation



Forschungsprodukte & Biochemikalien



Zellkultur & Verbrauchsmaterial



Diagnostik & molekulare Diagnostik



Laborgeräte & Service

Weitere Information auf den folgenden Seiten!
See the following pages for more information!



Lieferung & Zahlungsart

siehe unsere [Liefer- und Versandbedingungen](#)

Zuschläge

- Mindermengenzuschlag
- Trockeneiszuschlag
- Gefahrgutzuschlag
- Expressversand

SZABO-SCANDIC HandelsgmbH

Quellenstraße 110, A-1100 Wien

T. +43(0)1 489 3961-0

F. +43(0)1 489 3961-7

mail@szabo-scandic.com

www.szabo-scandic.com

[linkedin.com/company/szaboscandic](https://www.linkedin.com/company/szaboscandic) 



PROP1 purified MaxPab mouse polyclonal antibody (B01P) MaxPab®

Catalog # : H00005626-B01P

規格 : [50 ug]

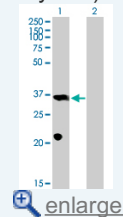
[List All](#)

Specification

Product Description:	Mouse polyclonal antibody raised against a full-length human PROP1 protein.
Immunogen:	PROP1 (NP_006252.1, 1 a.a. ~ 226 a.a) full-length human protein.
Sequence:	MEAERRRQAEKPKKGRVGSLLPERHPATGTPTTTVDSSAPPCRRLPG AGGGRSRFSPQGGQGRPHSRRRHRTTFSPVQLEQLSAFGRNQYP DIWARESLARDTGLSEARIQWVFQNRRAKQRKQERSLLQPLAHLSPA AFSSFLPESTACPYSYAAPPPVTCFPHYSHALPSQPSTGGAFALSHQSE DWYPTLHPAPAGHLPCPPPPMLPLSLEPSKSWN
Host:	Mouse
Reactivity:	Human
Quality Control Testing:	Antibody reactive against mammalian transfected lysate.
Storage Buffer:	In 1x PBS, pH 7.4
Storage Instruction:	Store at -20°C or lower. Aliquot to avoid repeated freezing and thawing.
MSDS:	 Download
Datasheet:	 Download

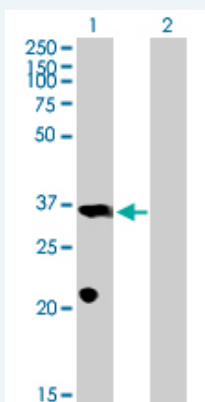
Application Image

Western Blot (Transfected lysate)



Applications

Western Blot (Transfected lysate)



Western Blot analysis of PROP1 expression in transfected 293T cell line (H00005626-T01) by PROP1 MaxPab polyclonal antibody.

Lane 1: PROP1 transfected lysate(24.86 KDa).
Lane 2: Non-transfected lysate.

 [Protocol Download](#)

Gene Information

Entrez GeneID: [5626](#)

GeneBank Accession#: [NM_006261.2](#)

Protein Accession#: [NP_006252.1](#)

Gene Name: PROP1

Gene Alias: -

Gene Description: PROP paired-like homeobox 1

Omim ID: [601538](#)

Gene Ontology: [Hyperlink](#)

Gene Summary: PROP1 has both DNA-binding and transcriptional activation ability. Its expression leads to ontogenesis of pituitary gonadotropes, as well as somatotropes, lactotropes, and caudomedial thyrotropes. Inactivating mutations in PROP1 result in deficiencies of luteinizing hormone (LH; MIM 152780), follicle-stimulating hormone (FSH; MIM 136530), growth hormone (GH; MIM 139250), prolactin (PRL; MIM 176760), and thyroid-stimulating hormone (TSH; MIM 188540). See combined pituitary hormone deficiency (CPHD; MIM 262600).[supplied by OMIM]

Other Designations: OTTHUMP00000161487, prophet of Pit1, paired-like homeodomain transcription factor

Related Disease

[Cardiovascular Diseases](#) [Diabetes Mellitus, Type 2](#) [Edema](#) [Hypopituitarism](#)

[服務條款](#) | [隱私權政策](#) | [著作及商標](#) | [網站地圖](#)

©2016 亞諾法生技股份有限公司 Abnova Corporation. 版權所有.