



SZABO SCANDIC

Part of Europa Biosite

Produktinformation



Forschungsprodukte & Biochemikalien



Zellkultur & Verbrauchsmaterial



Diagnostik & molekulare Diagnostik



Laborgeräte & Service

Weitere Information auf den folgenden Seiten!
See the following pages for more information!



Lieferung & Zahlungsart

siehe unsere [Liefer- und Versandbedingungen](#)

Zuschläge

- Mindermengenzuschlag
- Trockeneiszuschlag
- Gefahrgutzuschlag
- Expressversand

SZABO-SCANDIC HandelsgmbH

Quellenstraße 110, A-1100 Wien

T. +43(0)1 489 3961-0

F. +43(0)1 489 3961-7

mail@szabo-scandic.com

www.szabo-scandic.com

[linkedin.com/company/szaboscandic](https://www.linkedin.com/company/szaboscandic) 

PROS1 purified MaxPab rabbit polyclonal antibody (D01P) MaxPab®

Catalog # : H00005627-D01P

規格 : [100 ug]

[List All](#)

Specification

Product Description: Rabbit polyclonal antibody raised against a full-length human PROS1 protein.

Immunogen: PROS1 (AAH15801.1, 1 a.a. ~ 676 a.a) full-length human protein.

Sequence:
 MRVLGGRCGALLACLLLVPVSEANFLSKQQASQVLVRKRRANSLLEET
 KQGNLERECIEELCNKEEAREVFENDPETDYFYPKYLVLRSFQTGLFT
 AARQSTNAYPDLRSCVNAIPDQCSPLPCNEDGYMSCKDGKASFTCTCK
 PGWQGEKCEF DINECKDPSNINGGCSQICDNTPGSYHCCKNGFVMLSN
 KKDCKDVDECSLKPSICGTAVCKNIPGDFECECEGYRYNLKSKCEDID
 ECSENMAQLCVNYPGGYTCYCDGKKGFKLAQDQKSCEVSVCLPLNL
 DTKYELLYLAEQFAGVWLYLKFRLPEISRFSAEFDRTYDSEGVIYAESI
 DHSALLIALRGGKIEVQLKNEHTSKITGGDVINGLWNMVSVEELEHSI
 SIKIAKEAVMDINKPGPLFKPENGLLETKVYFAGFPRKVESELKPINPRLD
 GCIRSWNLKMGASGIKEIQEKQNKHCLVTVEKGSYYPGSGIAQFHIDYN
 NVSSAEGWHVNTLNIRPSTGTGVMALVSGNNTVPFVSLVDSTSEKS
 QDILLSVENTVIYRIQALSLCSDQQSHLEFRVNRNLELSTPLKIETISHEDL
 QRQLAVLDKAMKAKVATYLGGLPDVVPFSATPVNAFYNGCMEVNINGVQL
 DLDEAISKHNDIRAHSCPSVWKKTKNS

Host: Rabbit

Reactivity: Human

Quality Control Testing: Antibody reactive against mammalian transfected lysate.

Storage Buffer: In 1x PBS, pH 7.4

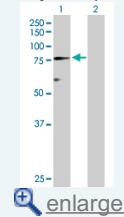
Storage Instruction: Store at -20°C or lower. Aliquot to avoid repeated freezing and thawing.

MSDS:  [Download](#)

Datasheet:  [Download](#)

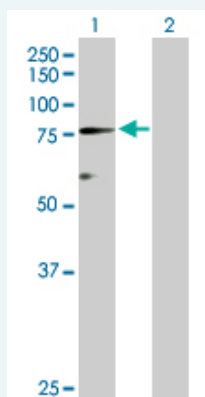
Application Image

Western Blot (Transfected lysate)



Applications

Western Blot (Transfected lysate)



Western Blot analysis of PROS1 expression in transfected 293T cell line (H00005627-T02)

by PROS1 MaxPab polyclonal antibody.

Lane 1: PROS1 transfected lysate(75.10 KDa).

Lane 2: Non-transfected lysate.

 [Protocol Download](#)

Gene Information

Entrez GeneID: [5627](#)

GeneBank [BC015801.1](#)

Accession#:

Protein [AAH15801.1](#)

Accession#:

Gene Name: PROS1

Gene Alias: PROS,PS21,PS22,PS23,PS24,PS25,PSA

Gene protein S (alpha)

Description:

Omim ID: [176880](#)

Gene Ontology: [Hyperlink](#)

Gene Summary: This gene encodes a vitamin K-dependent plasma protein that functions as a cofactor for the anticoagulant protease, activated protein C (APC) to inhibit blood coagulation. It is found in plasma in both a free, functionally active form and also in an inactive form complexed with C4b-binding protein. Mutations in this gene result in autosomal dominant hereditary thrombophilia. An inactive pseudogene of this locus is located at an adjacent region on chromosome 3. [provided by RefSeq]

Other protein S, alpha,protein Sa

Designations:

Gene Pathway

[Complement and coagulation cascades](#)

Related Disease

[Abortion](#), [Spontaneous Cardiovascular Diseases](#), [Carotid Stenosis](#), [Chorioamnionitis](#)

[Coronary Disease](#), [Fetal Membranes, Premature Rupture](#)

[Genetic Predisposition to Disease](#), [Inflammation](#), [Obstetric Labor, Premature Pre-Eclampsia](#)

[Pregnancy Complications](#), [Hematologic](#), [Premature Birth](#), [Protein S Deficiency](#), [Stroke](#)

[Thrombophilia](#), [Thrombosis](#), [Venous Thrombosis](#)

[服務條款](#) | [隱私權政策](#) | [著作及商標](#) | [網站地圖](#)

©2016 亞諾法生技股份有限公司 Abnova Corporation. 版權所有.