



SZABO SCANDIC

Part of Europa Biosite

Produktinformation



Forschungsprodukte & Biochemikalien



Zellkultur & Verbrauchsmaterial



Diagnostik & molekulare Diagnostik



Laborgeräte & Service

Weitere Information auf den folgenden Seiten!
See the following pages for more information!



Lieferung & Zahlungsart

siehe unsere [Liefer- und Versandbedingungen](#)

Zuschläge

- Mindermengenzuschlag
- Trockeneiszuschlag
- Gefahrgutzuschlag
- Expressversand

SZABO-SCANDIC HandelsgmbH

Quellenstraße 110, A-1100 Wien

T. +43(0)1 489 3961-0

F. +43(0)1 489 3961-7

mail@szabo-scandic.com

www.szabo-scandic.com

[linkedin.com/company/szaboscandic](https://www.linkedin.com/company/szaboscandic) 

PROS1 monoclonal antibody (M01), clone 3D7

Catalog # : H00005627-M01

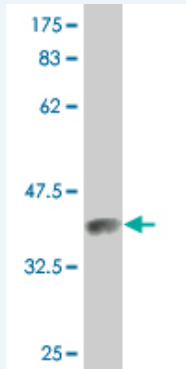
規格 : [100 ug]

List All

Specification

Product Description:	Mouse monoclonal antibody raised against a partial recombinant PROS1.
Immunogen:	PROS1 (NP_000304, 419 a.a. ~ 516 a.a) partial recombinant protein with GST tag. MW of the GST tag alone is 26 KDa.
Sequence:	GLLETKVYFAGFPRKVESELIKPINPRLDGCIRSWNLMKQGASGIKEIIQEK QNKHCLVTVEKGSYYPGSGIAQFHIDYNNVSSAEGWHVNVTLNIRP
Host:	Mouse
Reactivity:	Human
Isotype:	IgG2b Kappa

Quality Control Testing: Antibody Reactive Against Recombinant Protein.



Western Blot detection against Immunogen (36.52 KDa) .

Storage Buffer: In 1x PBS, pH 7.4

Storage Instruction: Store at -20°C or lower. Aliquot to avoid repeated freezing and thawing.

MSDS: [Download](#)

Datasheet: [Download](#)

Applications

Western Blot (Recombinant protein)

[Protocol Download](#)

ELISA

Gene Information

Entrez GeneID: [5627](#)

GeneBank [NM_000313](#)

Application Image

Western Blot (Recombinant protein)

ELISA

Accession#:

Protein [NP_000304](#)

Accession#:

Gene Name: [PROS1](#)

Gene Alias: [PROS,PS21,PS22,PS23,PS24,PS25,PSA](#)

Gene [protein S \(alpha\)](#)

Description:

Omim ID: [176880](#)

Gene Ontology: [Hyperlink](#)

Gene Summary: This gene encodes a vitamin K-dependent plasma protein that functions as a cofactor for the anticoagulant protease, activated protein C (APC) to inhibit blood coagulation. It is found in plasma in both a free, functionally active form and also in an inactive form complexed with C4b-binding protein. Mutations in this gene result in autosomal dominant hereditary thrombophilia. An inactive pseudogene of this locus is located at an adjacent region on chromosome 3. [provided by RefSeq]

Other [protein S, alpha,protein Sa](#)

Designations:**Gene Pathway**

[Complement and coagulation cascades](#)

Related Disease

[Abortion, Spontaneous Cardiovascular Diseases Carotid Stenosis Chorioamnionitis Coronary Disease Fetal Membranes, Premature Rupture Genetic Predisposition to Disease Inflammation Obstetric Labor, Premature Pre-Eclampsia Pregnancy Complications, Hematologic Premature Birth Protein S Deficiency Stroke Thrombophilia Thrombosis Venous Thrombosis](#)

[服務條款](#) | [隱私權政策](#) | [著作及商標](#) | [網站地圖](#)

©2016 亞諾法生技股份有限公司 Abnova Corporation. 版權所有.