



SZABO SCANDIC

Part of Europa Biosite

Produktinformation



Forschungsprodukte & Biochemikalien



Zellkultur & Verbrauchsmaterial



Diagnostik & molekulare Diagnostik



Laborgeräte & Service

Weitere Information auf den folgenden Seiten!
See the following pages for more information!



Lieferung & Zahlungsart

siehe unsere [Liefer- und Versandbedingungen](#)

Zuschläge

- Mindermengenzuschlag
- Trockeneiszuschlag
- Gefahrgutzuschlag
- Expressversand

SZABO-SCANDIC HandelsgmbH

Quellenstraße 110, A-1100 Wien

T. +43(0)1 489 3961-0

F. +43(0)1 489 3961-7

mail@szabo-scandic.com

www.szabo-scandic.com

[linkedin.com/company/szaboscandic](https://www.linkedin.com/company/szaboscandic) 

PRPH polyclonal antibody (A01)

Catalog # : H00005630-A01

規格 : [50 uL]

List All

Specification

Product Description: Mouse polyclonal antibody raised against a partial recombinant PRPH.

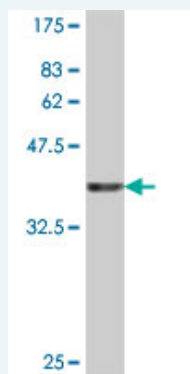
Immunogen: PRPH (NP_006253, 374 a.a. ~ 470 a.a) partial recombinant protein with GST tag.

Sequence: RHLREYQELLNVKMALDIEIATYRKLLEGEESRISVPVHSFASLNIKTTVPE
VEPPQDShSRKTVLIKTIETRNGEVVTESQKEQRSELDKSSAHSY

Host: Mouse

Reactivity: Human

Quality Control Testing: Antibody Reactive Against Recombinant Protein.



Western Blot detection against Immunogen (36.78 kDa) .

Storage Buffer: 50 % glycerol

Storage Instruction: Store at -20°C or lower. Aliquot to avoid repeated freezing and thawing.

MSDS:  [Download](#)

Datasheet:  [Download](#)

Applications

Western Blot (Recombinant protein)

 [Protocol Download](#)

ELISA

Gene Information

Entrez GeneID: [5630](#)

GeneBank Accession#: [NM_006262](#)

Protein [NP_006253](#)

Accession#:

Gene Name: PRPH

Gene Alias: NEF4,PRPH1

Gene peripherin

Description:

Omim ID: [105400](#), [170710](#)

Gene Ontology: [Hyperlink](#)

Gene Summary: This gene encodes a cytoskeletal protein found in neurons of the peripheral nervous system. The encoded protein is a type III intermediate filament protein with homology to other cytoskeletal proteins such as desmin, and is a different protein than the peripherin found in photoreceptors. Mutations in this gene have been associated with susceptibility to amyotrophic lateral sclerosis. [provided by RefSeq]

Other neurofilament 4 (57kD)

Designations:

Gene Pathway

[Amyotrophic lateral sclerosis \(ALS\)](#)

Related Disease

[Amyotrophic Lateral Sclerosis](#) [Amyotrophic lateral sclerosis](#) [Charcot-Marie-Tooth Disease](#)
[Deafness](#) [Deafness](#)

[服務條款](#) | [隱私權政策](#) | [著作及商標](#) | [網站地圖](#)

©2016 亞諾法生技股份有限公司 Abnova Corporation. 版權所有.