



SZABO SCANDIC

Part of Europa Biosite

Produktinformation



Forschungsprodukte & Biochemikalien



Zellkultur & Verbrauchsmaterial



Diagnostik & molekulare Diagnostik



Laborgeräte & Service

Weitere Information auf den folgenden Seiten!
See the following pages for more information!



Lieferung & Zahlungsart

siehe unsere [Liefer- und Versandbedingungen](#)

Zuschläge

- Mindermengenzuschlag
- Trockeneiszuschlag
- Gefahrgutzuschlag
- Expressversand

SZABO-SCANDIC HandelsgmbH

Quellenstraße 110, A-1100 Wien

T. +43(0)1 489 3961-0

F. +43(0)1 489 3961-7

mail@szabo-scandic.com

www.szabo-scandic.com

[linkedin.com/company/szaboscandic](https://www.linkedin.com/company/szaboscandic) 

PRPH purified MaxPab rabbit polyclonal antibody (D01P) MaxPab®

Catalog # : H00005630-D01P

規格 : [100 ug]

[List All](#)

Specification

Product Description: Rabbit polyclonal antibody raised against a full-length human PRPH protein.

Immunogen: PRPH (NP_006253.2, 1 a.a. ~ 470 a.a) full-length human protein.

Sequence:
 MSHHPSGLRAGFSSTSYRRTFGPPPSLSPGAFSYSSSSRFSSSRLGAS
 ASPSSSVRLGSFRSPRAGAGALLRLPSERLDFSMAEALNQEFLATRSNE
 KQELQELNDRFANFIEKVRFLQEQNAALRGELSQARGQEPARADQLCQ
 QELRELRRELELLGRERDRVQVERDGLAEDLAALKQRLEEETRKREDA
 EHNLVLFKRDVDDATLSRLELERKIESLMDEIEFLKKLHEEELRDLQVSVE
 SQVQVQVEVEATVKPELTAALRDIRAQYESIAAKNLQEAEEWYKSKYADL
 SDAANRNHEALRQAKQEMNESRRQIQSLTCEVDGLRGTNEALLRQLREL
 EEQFALEAGGYQAGAARLEEELRQLKEEMARHLREYQELLNVKMALDIEI
 ATYRKLLEGESRISVPVHSFASLNIKTTVPEVEPPQDShSRKTVLIKTIET
 RNGEVVTESQKEQRSELDKSSAHSY

Host: Rabbit

Reactivity: Human

Quality Control Testing: Antibody reactive against mammalian transfected lysate.

Storage Buffer: In 1x PBS, pH 7.4

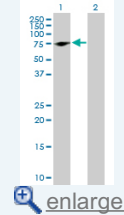
Storage Instruction: Store at -20°C or lower. Aliquot to avoid repeated freezing and thawing.

MSDS: [Download](#)

Datasheet: [Download](#)

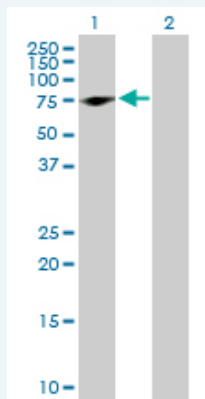
Application Image

Western Blot (Transfected lysate)



Applications

Western Blot (Transfected lysate)



Western Blot analysis of PRPH expression in transfected 293T cell line (H00005630-T01) by PRPH MaxPab polyclonal antibody.

Lane 1: PRPH transfected lysate(53.70 KDa).
 Lane 2: Non-transfected lysate.

Gene Information

Entrez GeneID: [5630](#)

**GeneBank
Accession#:** [NM_006262.3](#)

**Protein
Accession#:** [NP_006253.2](#)

Gene Name: PRPH

Gene Alias: NEF4,PRPH1

**Gene
Description:** peripherin

Omim ID: [105400](#), [170710](#)

Gene Ontology: [Hyperlink](#)

Gene Summary: This gene encodes a cytoskeletal protein found in neurons of the peripheral nervous system. The encoded protein is a type III intermediate filament protein with homology to other cytoskeletal proteins such as desmin, and is a different protein that the peripherin found in photoreceptors. Mutations in this gene have been associated with susceptibility to amyotrophic lateral sclerosis. [provided by RefSeq]

**Other
Designations:** neurofilament 4 (57kD)

Gene Pathway

[Amyotrophic lateral sclerosis \(ALS\)](#)

Related Disease

[Amyotrophic Lateral Sclerosis](#) [Amyotrophic lateral sclerosis](#) [Charcot-Marie-Tooth Disease](#)
[Deafness](#) [Deafness](#)