



SZABO SCANDIC

Part of Europa Biosite

Produktinformation



Forschungsprodukte & Biochemikalien



Zellkultur & Verbrauchsmaterial



Diagnostik & molekulare Diagnostik



Laborgeräte & Service

Weitere Information auf den folgenden Seiten!
See the following pages for more information!



Lieferung & Zahlungsart

siehe unsere [Liefer- und Versandbedingungen](#)

Zuschläge

- Mindermengenzuschlag
- Trockeneiszuschlag
- Gefahrgutzuschlag
- Expressversand

SZABO-SCANDIC HandelsgmbH

Quellenstraße 110, A-1100 Wien

T. +43(0)1 489 3961-0

F. +43(0)1 489 3961-7

mail@szabo-scandic.com

www.szabo-scandic.com

[linkedin.com/company/szaboscandic](https://www.linkedin.com/company/szaboscandic) 

PRPH 293T Cell Transient Overexpression Lysate(Denatured)

Catalog # : H00005630-T01

規格 : [100 uL]

[List All](#)

Specification

Transfected Cell Line: 293T

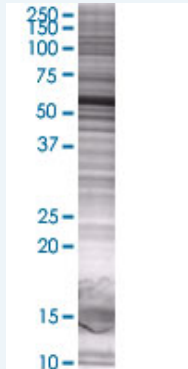
Plasmid: pCMV-PRPH full-length

Host: Human

Theoretical MW (kDa): 51.81

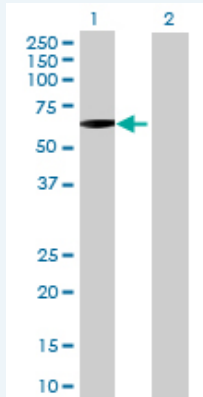
Quality Control Testing: Transient overexpression cell lysate was tested with Anti-PRPH antibody (H00005630-B01) by Western Blots.

SDS-PAGE Gel



PRPH transfected lysate.

Western Blot



Lane 1: PRPH transfected lysate (51.81 KDa)

Lane 2: Non-transfected lysate.

Storage Buffer: 1X Sample Buffer (50 mM Tris-HCl, 2% SDS, 10% glycerol, 300 mM 2-mercaptoethanol, 0.01% Bromophenol blue)

Storage Instruction: Store at -80°C. Aliquot to avoid repeated freezing and thawing.

MSDS:  [Download](#)

Applications

Western Blot

Gene Information

Entrez GeneID: [5630](#)

GeneBank Accession#: [NM_006262.3](#)

Protein Accession#: [NP_006253.2](#)

Gene Name: PRPH

Gene Alias: NEF4,PRPH1

Gene Description: peripherin

Omim ID: [105400](#), [170710](#)

Gene Ontology: [Hyperlink](#)

Gene Summary: This gene encodes a cytoskeletal protein found in neurons of the peripheral nervous system. The encoded protein is a type III intermediate filament protein with homology to other cytoskeletal proteins such as desmin, and is a different protein than the peripherin found in photoreceptors. Mutations in this gene have been associated with susceptibility to amyotrophic lateral sclerosis. [provided by RefSeq]

Other Designations: neurofilament 4 (57kD)

Gene Pathway

[Amyotrophic lateral sclerosis \(ALS\)](#)

Related Disease

[Amyotrophic Lateral Sclerosis](#) [Amyotrophic lateral sclerosis](#) [Charcot-Marie-Tooth Disease](#) [Deafness](#) [Deafness](#)