



# SZABO SCANDIC

Part of Europa Biosite

## Produktinformation



Forschungsprodukte & Biochemikalien



Zellkultur & Verbrauchsmaterial



Diagnostik & molekulare Diagnostik



Laborgeräte & Service

Weitere Information auf den folgenden Seiten!  
See the following pages for more information!



### Lieferung & Zahlungsart

siehe unsere [Liefer- und Versandbedingungen](#)

### Zuschläge

- Mindermengenzuschlag
- Trockeneiszuschlag
- Gefahrgutzuschlag
- Expressversand

### SZABO-SCANDIC HandelsgmbH

Quellenstraße 110, A-1100 Wien

T. +43(0)1 489 3961-0

F. +43(0)1 489 3961-7

[mail@szabo-scandic.com](mailto:mail@szabo-scandic.com)

[www.szabo-scandic.com](http://www.szabo-scandic.com)

[linkedin.com/company/szaboscandic](https://www.linkedin.com/company/szaboscandic) 

## LGMN purified MaxPab rabbit polyclonal antibody (D01P) MaxPab®

Catalog # : H00005641-D01P

規格 : [ 100 ug ]

[List All](#)

### Specification

**Product Description:** Rabbit polyclonal antibody raised against a full-length human LGMN protein.

**Immunogen:** LGMN (NP\_001008530.1, 1 a.a. ~ 433 a.a) full-length human protein.

**Sequence:**  
 MWVKVAVFLSVALGIGAVPIDDPEDGGKHWVIVAGSNGWYNYRHQAD  
 ACHAYQIIHRNGIPDEQIVMMYDDIAYSEDNPTPGMINRPNGTDVYQGV  
 KDYTGEDVTPQNFLAVLRGDAEAVKIGSGKVLKSGPQDHFVIFYFTDHG  
 STGILVFPNEDLHVKDLNETIHYMYKHKMYRKMVFYIEACESGSMMNHLP  
 DNINVYATTAANPRESSYACYDEKRSTYLGDWYSVNW MEDSDVEDLTK  
 ETLHKQYHLVKSHTNTSHVMQYGNKTISTMKVMQFQGMKRKASSPVPLP  
 PVTHLDLTPSPDVPLTIMKRKLMNTNDLEESRQLTEEIQRHLDARHLIEKS  
 VRKIVSLLAASEAEVEQLLSERAPLTGHSCYPEALLHFRTHCFNWHSPY  
 EYALRHLYVLVNLCEKPYPLHRIKLSMDHVCLGHY

**Host:** Rabbit

**Reactivity:** Human

**Quality Control Testing:** Antibody reactive against mammalian transfected lysate.

**Storage Buffer:** In 1x PBS, pH 7.4

**Storage Instruction:** Store at -20°C or lower. Aliquot to avoid repeated freezing and thawing.

**MSDS:** [Download](#)

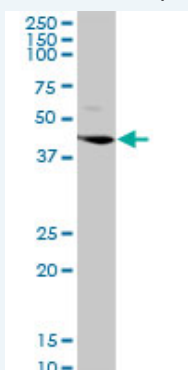
**Datasheet:** [Download](#)

### Publication Reference

1. Cleavage of Toll-like receptor 3 by cathepsins B and H is essential for signaling.  
 Garcia-Cattaneo A, Gobert FX, Muller M, Toscano F, Flores M, Lescure A, Del Nery E, Benaroch P. Proc Natl Acad Sci U S A. 2012 Jun 5;109(23):9053-8. Epub 2012 May 18.

### Applications

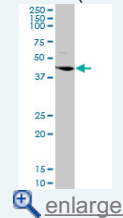
#### Western Blot (Cell lysate)



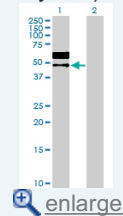
LGMN MaxPab rabbit polyclonal antibody. Western Blot analysis of LGMN expression in

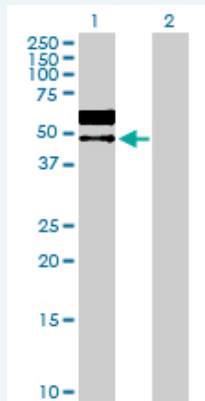
### Application Image

#### Western Blot (Cell lysate)



#### Western Blot (Transfected lysate)



**Western Blot (Transfected lysate)**

Western Blot analysis of LGMN expression in transfected 293T cell line ([H00005641-T01](#)) by LGMN MaxPab polyclonal antibody.

Lane 1: LGMN transfected lysate(49.40 KDa).

Lane 2: Non-transfected lysate.

**Gene Information**

Entrez GeneID: [5641](#)

GeneBank [NM\\_001008530.1](#)

Accession#:

Protein [NP\\_001008530.1](#)

Accession#:

Gene Name: LGMN

Gene Alias: AEP,LGMN1,PRSC1

Gene legumain

Description:

Omim ID: [602620](#)

Gene Ontology: [Hyperlink](#)

**Gene Summary:** This gene encodes a cysteine protease that has a strict specificity for hydrolysis of asparaginyl bonds. This enzyme may be involved in the processing of bacterial peptides and endogenous proteins for MHC class II presentation in the lysosomal/endosomal systems. Enzyme activation is triggered by acidic pH and appears to be autocatalytic. Protein expression occurs after monocytes differentiate into dendritic cells. A fully mature, active enzyme is produced following lipopolysaccharide expression in mature dendritic cells. Overexpression of this gene may be associated with the majority of solid tumor types. This gene has a pseudogene on chromosome 13. Several alternatively spliced transcript variants have been described, but the biological validity of only two has been determined. These two variants encode the same isoform. [provided by RefSeq]

Other Designations: asparaginyl endopeptidase,cysteine protease 1,protease, cysteine, 1 (legumain)

**Gene Pathway**

[Antigen processing and presentation Lysosome](#)

