



# SZABO SCANDIC

Part of Europa Biosite

## Produktinformation



Forschungsprodukte & Biochemikalien



Zellkultur & Verbrauchsmaterial



Diagnostik & molekulare Diagnostik



Laborgeräte & Service

Weitere Information auf den folgenden Seiten!  
See the following pages for more information!



### Lieferung & Zahlungsart

siehe unsere [Liefer- und Versandbedingungen](#)

### Zuschläge

- Mindermengenzuschlag
- Trockeneiszuschlag
- Gefahrgutzuschlag
- Expressversand

### SZABO-SCANDIC HandelsgmbH

Quellenstraße 110, A-1100 Wien

T. +43(0)1 489 3961-0

F. +43(0)1 489 3961-7

[mail@szabo-scandic.com](mailto:mail@szabo-scandic.com)

[www.szabo-scandic.com](http://www.szabo-scandic.com)

[linkedin.com/company/szaboscandic](https://www.linkedin.com/company/szaboscandic) 

## PRSS1 polyclonal antibody (A01)

Catalog # : H00005644-A01

規格 : [ 50 uL ]

[List All](#)

### Specification

**Product Description:** Mouse polyclonal antibody raised against a partial recombinant PRSS1.

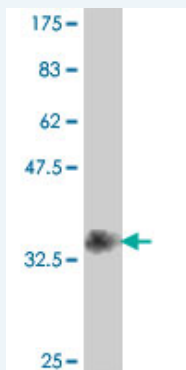
**Immunogen:** PRSS1 (NP\_002760, 138 a.a. ~ 247 a.a) partial recombinant protein with GST tag.

**Sequence:** KCLISGWGNTASSGADYPDELQCLDAPVLSQAKCEASYPGKITSNMFCV  
GFLEGGKDSCQGDSSGGPWCNGQLQGVVSWGDGCAQKNKPGVYTKV  
YNYVKWIKNTIAANS

**Host:** Mouse

**Reactivity:** Human

**Quality Control Testing:** Antibody Reactive Against Recombinant Protein.



Western Blot detection against Immunogen (38.21 kDa) .

**Storage Buffer:** 50 % glycerol

**Storage Instruction:** Store at -20°C or lower. Aliquot to avoid repeated freezing and thawing.

**MSDS:** [Download](#)

**Datasheet:** [Download](#)

### Applications

**Western Blot (Recombinant protein)**

[Protocol Download](#)

**ELISA**

### Gene Information

**Entrez GeneID:** [5644](#)

**GeneBank Accession#:** [NM\\_002769](#)

### Application Image

Western Blot (Recombinant protein)

ELISA

**Protein Accession#:** [NP\\_002760](#)

**Gene Name:** PRSS1

**Gene Alias:** MGC120175,MGC149362,TRP1,TRY1,TRY4,TRYP1

**Gene Description:** protease, serine, 1 (trypsin 1)

**Omim ID:** [167800](#), [276000](#)

**Gene Ontology:** [Hyperlink](#)

**Gene Summary:** This gene encodes a trypsinogen, which is a member of the trypsin family of serine proteases. This enzyme is secreted by the pancreas and cleaved to its active form in the small intestine. It is active on peptide linkages involving the carboxyl group of lysine or arginine. Mutations in this gene are associated with hereditary pancreatitis. This gene and several other trypsinogen genes are localized to the T cell receptor beta locus on chromosome 7. [provided by RefSeq]

**Other Designations:** cationic trypsinogen,digestive zymogen,nonfunctional trypsin 1,protease, serine, 1,serine protease 1,trypsin I,trypsinogen 1,trypsinogen A

### Gene Pathway

[Neuroactive ligand-receptor interaction](#)

### Related Disease

[Acute Disease](#) [Adenocarcinoma](#) [Calcinosis](#) [Chronic Disease](#) [Cystic Fibrosis](#) [Cystic fibrosis](#) [Diabetes Mellitus](#) [Exocrine Pancreatic Insufficiency](#) [Genetic Predisposition to Disease](#) [Hyperlipidemias](#) [Hyperparathyroidism, Primary](#) [Infant, Newborn, Diseases](#) [Pancreatic cancer](#) [Pancreatic Diseases](#) [Pancreatic Neoplasms](#) [Pancreatitis](#) [Pancreatitis, Alcoholic](#) [Pancreatitis, Chronic](#) [Recurrence](#)

... see more