



# SZABO SCANDIC

Part of Europa Biosite

## Produktinformation



Forschungsprodukte & Biochemikalien



Zellkultur & Verbrauchsmaterial



Diagnostik & molekulare Diagnostik



Laborgeräte & Service

Weitere Information auf den folgenden Seiten!  
See the following pages for more information!



### Lieferung & Zahlungsart

siehe unsere [Liefer- und Versandbedingungen](#)

### Zuschläge

- Mindermengenzuschlag
- Trockeneiszuschlag
- Gefahrgutzuschlag
- Expressversand

### SZABO-SCANDIC HandelsgmbH

Quellenstraße 110, A-1100 Wien

T. +43(0)1 489 3961-0

F. +43(0)1 489 3961-7

[mail@szabo-scandic.com](mailto:mail@szabo-scandic.com)

[www.szabo-scandic.com](http://www.szabo-scandic.com)

[linkedin.com/company/szaboscandic](https://www.linkedin.com/company/szaboscandic) 



**PRSS1 purified MaxPab mouse polyclonal antibody (B01P)** MaxPab®

Catalog # : H00005644-B01P

規格 : [ 50 ug ]

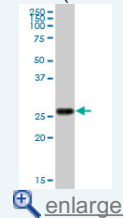
[List All](#)

**Specification**

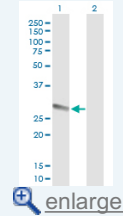
<b>Product Description:</b>	Mouse polyclonal antibody raised against a full-length human PRSS1 protein.
<b>Immunogen:</b>	PRSS1 (NP_002760.1, 1 a.a. ~ 247 a.a) full-length human protein.
<b>Sequence:</b>	MNPLLILTFVAAALAAPFDDDDKIVGGYNCEENSVPYQVSLNSGYHFCGG SLINEQWVVSAGHCYKSRIQVRLGEHNIEVLEGNQFINAAKIIRHPQYDRK TLNNDIMLIKLSRAVINARVSTISLPTAPPATGTKCLISGWGNTASSGADY PDELQCLDAPVLSQAKCEASYPGKITSNMFCVGFLEGGKDSCQGDSSG PVVCGQLQGWSWGDGCAQKNKPGVYTKVYNYVKWIKNTIAANS
<b>Host:</b>	Mouse
<b>Reactivity:</b>	Human
<b>Quality Control Testing:</b>	Antibody reactive against mammalian transfected lysate.
<b>Storage Buffer:</b>	In 1x PBS, pH 7.4
<b>Storage Instruction:</b>	Store at -20°C or lower. Aliquot to avoid repeated freezing and thawing.
<b>MSDS:</b>	 <a href="#">Download</a>
<b>Datasheet:</b>	 <a href="#">Download</a>

**Application Image**

Western Blot (Tissue lysate)

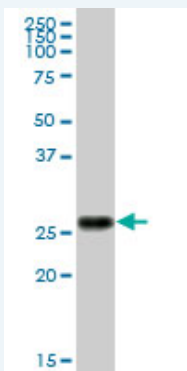


Western Blot (Transfected lysate)



**Applications**

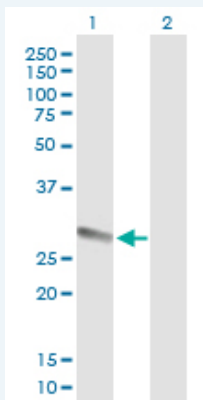
Western Blot (Tissue lysate)



PRSS1 MaxPab polyclonal antibody. Western Blot analysis of PRSS1 expression in human pancreas.


 [Protocol Download](#)

Western Blot (Transfected lysate)



Western Blot analysis of PRSS1 expression in transfected 293T cell line ([H00005644-T01](#)) by PRSS1 MaxPab polyclonal antibody.

Lane 1: PRSS1 transfected lysate(27.17 KDa).  
Lane 2: Non-transfected lysate.

 [Protocol Download](#)

## Gene Information

**Entrez GeneID:** [5644](#)

**GeneBank Accession#:** [NM\\_002769.2](#)

**Protein Accession#:** [NP\\_002760.1](#)

**Gene Name:** PRSS1

**Gene Alias:** MGC120175,MGC149362,TRP1,TRY1,TRY4,TRYP1

**Gene Description:** protease, serine, 1 (trypsin 1)

**Omim ID:** [167800](#), [276000](#)

**Gene Ontology:** [Hyperlink](#)

**Gene Summary:** This gene encodes a trypsinogen, which is a member of the trypsin family of serine proteases. This enzyme is secreted by the pancreas and cleaved to its active form in the small intestine. It is active on peptide linkages involving the carboxyl group of lysine or arginine. Mutations in this gene are associated with hereditary pancreatitis. This gene and several other trypsinogen genes are localized to the T cell receptor beta locus on chromosome 7. [provided by RefSeq]

**Other Designations:** cationic trypsinogen,digestive zymogen,nonfunctional trypsin 1,protease, serine, 1,serine protease 1,trypsin I,trypsinogen 1,trypsinogen A

## Gene Pathway

[Neuroactive ligand-receptor interaction](#)

## Related Disease

[Acute Disease](#) [Adenocarcinoma](#) [Calcinosis](#) [Chronic Disease](#) [Cystic Fibrosis](#) [Cystic fibrosis](#) [Diabetes Mellitus](#) [Exocrine Pancreatic Insufficiency](#) [Genetic Predisposition to Disease](#) [Hyperlipidemias](#) [Hyperparathyroidism, Primary](#) [Infant, Newborn, Diseases](#) [Pancreatic cancer](#) [Pancreatic Diseases](#) [Pancreatic Neoplasms](#) [Pancreatitis](#) [Pancreatitis, Alcoholic](#) [Pancreatitis, Chronic](#) [Recurrence](#)

... see more

---

---

[服務條款](#) | [隱私權政策](#) | [著作及商標](#) | [網站地圖](#)

©2016 亞諾法生技股份有限公司 Abnova Corporation. 版權所有.