



SZABO SCANDIC

Part of Europa Biosite

Produktinformation



Forschungsprodukte & Biochemikalien



Zellkultur & Verbrauchsmaterial



Diagnostik & molekulare Diagnostik



Laborgeräte & Service

Weitere Information auf den folgenden Seiten!
See the following pages for more information!



Lieferung & Zahlungsart

siehe unsere [Liefer- und Versandbedingungen](#)

Zuschläge

- Mindermengenzuschlag
- Trockeneiszuschlag
- Gefahrgutzuschlag
- Expressversand

SZABO-SCANDIC HandelsgmbH

Quellenstraße 110, A-1100 Wien

T. +43(0)1 489 3961-0

F. +43(0)1 489 3961-7

mail@szabo-scandic.com

www.szabo-scandic.com

[linkedin.com/company/szaboscandic](https://www.linkedin.com/company/szaboscandic)

PRSS1 293T Cell Transient Overexpression Lysate(Denatured)

Catalog # : H00005644-T02

規格 : [100 uL]

[List All](#)

Specification

Transfected Cell Line: 293T

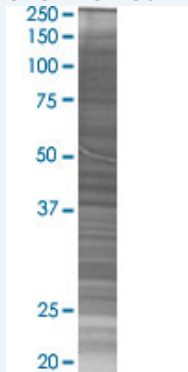
Plasmid: pCMV-PRSS1 full-length

Host: Human

Theoretical MW (kDa): 26.6

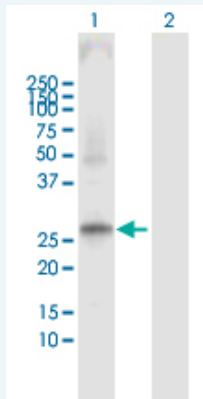
Quality Control Testing: Transient overexpression cell lysate was tested with Anti-PRSS1 antibody ([H00005644-D01](#)) by Western Blots.

SDS-PAGE Gel



PRSS1 transfected lysate.

Western Blot



Lane 1: PRSS1 transfected lysate (26.60 KDa)

Lane 2: Non-transfected lysate.

Storage Buffer: 1X Sample Buffer (50 mM Tris-HCl, 2% SDS, 10% glycerol, 300 mM 2-mercaptoethanol, 0.01% Bromophenol blue)

Storage Instruction: Store at -80°C. Aliquot to avoid repeated freezing and thawing.

MSDS:  [Download](#)

Applications

Application Image

Western Blot

Western Blot

Gene Information

Entrez GeneID: [5644](#)

GeneBank [NM_002769.2](#)
Accession#:

Protein [NP_002760.1](#)
Accession#:

Gene Name: PRSS1

Gene Alias: MGC120175,MGC149362,TRP1,TRY1,TRY4,TRYP1

Gene Description: protease, serine, 1 (trypsin 1)

Omim ID: [167800](#), [276000](#)

Gene Ontology: [Hyperlink](#)

Gene Summary: This gene encodes a trypsinogen, which is a member of the trypsin family of serine proteases. This enzyme is secreted by the pancreas and cleaved to its active form in the small intestine. It is active on peptide linkages involving the carboxyl group of lysine or arginine. Mutations in this gene are associated with hereditary pancreatitis. This gene and several other trypsinogen genes are localized to the T cell receptor beta locus on chromosome 7. [provided by RefSeq]

Other Designations: cationic trypsinogen,digestive zymogen,nonfunctional trypsin 1,protease, serine, 1,serine protease 1,trypsin I,trypsinogen 1,trypsinogen A

Gene Pathway

[Neuroactive ligand-receptor interaction](#)

Related Disease

[Acute Disease](#) [Adenocarcinoma](#) [Calcinosis](#) [Chronic Disease](#) [Cystic Fibrosis](#) [Cystic fibrosis](#) [Diabetes Mellitus](#) [Exocrine Pancreatic Insufficiency](#) [Genetic Predisposition to Disease](#) [Hyperlipidemias](#) [Hyperparathyroidism, Primary](#) [Infant, Newborn, Diseases](#) [Pancreatic cancer](#) [Pancreatic Diseases](#) [Pancreatic Neoplasms](#) [Pancreatitis](#) [Pancreatitis, Alcoholic](#) [Pancreatitis, Chronic](#) [Recurrence](#)

... see more