



SZABO SCANDIC

Part of Europa Biosite

Produktinformation



Forschungsprodukte & Biochemikalien



Zellkultur & Verbrauchsmaterial



Diagnostik & molekulare Diagnostik



Laborgeräte & Service

Weitere Information auf den folgenden Seiten!
See the following pages for more information!



Lieferung & Zahlungsart

siehe unsere [Liefer- und Versandbedingungen](#)

Zuschläge

- Mindermengenzuschlag
- Trockeneiszuschlag
- Gefahrgutzuschlag
- Expressversand

SZABO-SCANDIC HandelsgmbH

Quellenstraße 110, A-1100 Wien

T. +43(0)1 489 3961-0

F. +43(0)1 489 3961-7

mail@szabo-scandic.com

www.szabo-scandic.com

[linkedin.com/company/szaboscandic](https://www.linkedin.com/company/szaboscandic) 



PRSS2 purified MaxPab rabbit polyclonal antibody (D01P) MaxPab®

Catalog # : H00005645-D01P

規格 : [100 ug]

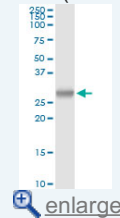
[List All](#)

Specification

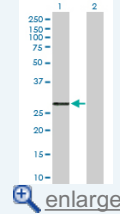
Product Description:	Rabbit polyclonal antibody raised against a full-length human PRSS2 protein.
Immunogen:	PRSS2 (NP_002761.1, 1 a.a. ~ 247 a.a) full-length human protein.
Sequence:	MNLLLILTFVAAVAAPFDDDDKIVGGYICEENSVPYQVSLNSGYHFCGG SLISEQWVVSAGHCYKSRIQVRLGEHNIEVLEGNQFINAAKIIRHPKYNSR TLDNDILLIKLSSPAVINSRVS AISLPTAPPAAGTESLISGWGNTLSSGADY PDELQCLDAPVLSQAECEASYPGKITNNMFCVGFLEGGKDSCQGDSSG PVVSNLQGLQGVSWGYGCAQKNRPGVYTKVYNYVDWIKDTIAANS
Host:	Rabbit
Reactivity:	Human
Quality Control Testing:	Antibody reactive against mammalian transfected lysate.
Storage Buffer:	In 1x PBS, pH 7.4
Storage Instruction:	Store at -20°C or lower. Aliquot to avoid repeated freezing and thawing.
MSDS:	 Download
Datasheet:	 Download

Application Image

Western Blot (Tissue lysate)

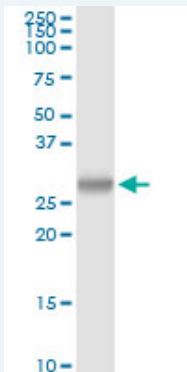


Western Blot (Transfected lysate)



Applications

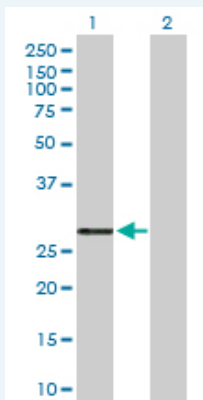
Western Blot (Tissue lysate)



PRSS2 MaxPab rabbit polyclonal antibody. Western Blot analysis of PRSS2 expression in human pancreas.

 [Protocol Download](#)

Western Blot (Transfected lysate)



Western Blot analysis of PRSS2 expression in transfected 293T cell line ([H00005645-T03](#)) by PRSS2 MaxPab polyclonal antibody.

Lane 1: PRSS2 transfected lysate(26.50 KDa).
Lane 2: Non-transfected lysate.

 [Protocol Download](#)

Gene Information

Entrez GeneID: [5645](#)

GeneBank Accession#: [NM_002770](#)

Protein Accession#: [NP_002761.1](#)

Gene Name: PRSS2

Gene Alias: MGC111183,MGC120174,TRY2,TRY8,TRYP2

Gene Description: protease, serine, 2 (trypsin 2)

Omim ID: [601564](#)

Gene Ontology: [Hyperlink](#)

Gene Summary: This gene encodes a trypsinogen, which is a member of the trypsin family of serine proteases. This enzyme is secreted by the pancreas and cleaved to its active form in the small intestine. It is active on peptide linkages involving the carboxyl group of lysine or arginine. This gene and several other trypsinogen genes are localized to the T cell receptor beta locus on chromosome 7. [provided by RefSeq]

Other Designations: anionic trypsinogen,protease serine 2 preproprotein,protease, serine, 2,protease, serine, 2, preproprotein,trypsin 2,trypsin II,trypsinogen 2

Gene Pathway

[Neuroactive ligand-receptor interaction](#)

Related Disease

[Adenocarcinoma](#) [Chronic Disease](#) [Genetic Predisposition to Disease](#) [Pancreatic cancer](#) [Pancreatic Neoplasms](#) [Pancreatitis](#) [Pancreatitis, Acute Necrotizing](#) [Pancreatitis, Alcoholic](#) [Pancreatitis, Chronic](#)