



SZABO SCANDIC

Part of Europa Biosite

Produktinformation



Forschungsprodukte & Biochemikalien



Zellkultur & Verbrauchsmaterial



Diagnostik & molekulare Diagnostik



Laborgeräte & Service

Weitere Information auf den folgenden Seiten!
See the following pages for more information!



Lieferung & Zahlungsart

siehe unsere [Liefer- und Versandbedingungen](#)

Zuschläge

- Mindermengenzuschlag
- Trockeneiszuschlag
- Gefahrgutzuschlag
- Expressversand

SZABO-SCANDIC HandelsgmbH

Quellenstraße 110, A-1100 Wien

T. +43(0)1 489 3961-0

F. +43(0)1 489 3961-7

mail@szabo-scandic.com

www.szabo-scandic.com

[linkedin.com/company/szaboscandic](https://www.linkedin.com/company/szaboscandic) 

PRSS2 293T Cell Transient Overexpression Lysate(Denatured)

Catalog # : H00005645-T02

規格 : [100 uL]

[List All](#)

Specification

Transfected Cell Line: 293T

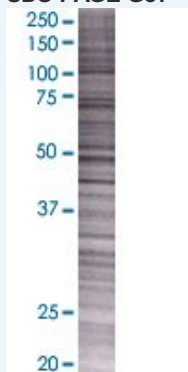
Plasmid: pCMV-PRSS2 full-length

Host: Human

Theoretical MW (kDa): 26.5

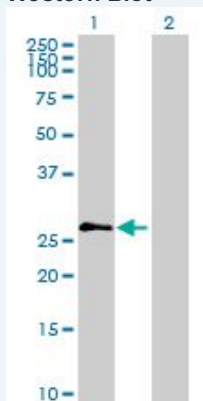
Quality Control Testing: Transient overexpression cell lysate was tested with Anti-PRSS2 antibody (H00005645-B02) by Western Blots.

SDS-PAGE Gel



PRSS2 transfected lysate.

Western Blot



Lane 1: PRSS2 transfected lysate (26.5 KDa)

Lane 2: Non-transfected lysate.

Storage Buffer: 1X Sample Buffer (50 mM Tris-HCl, 2% SDS, 10% glycerol, 300 mM 2-mercaptoethanol, 0.01% Bromophenol blue)

Storage Instruction: Store at -80°C. Aliquot to avoid repeated freezing and thawing.

MSDS:  [Download](#)

Applications

Application Image

Western Blot

Western Blot

Gene Information

Entrez GeneID: [5645](#)

GeneBank Accession#: [NM_002770](#)

Protein Accession#: [NP_002761](#)

Gene Name: PRSS2

Gene Alias: MGC111183,MGC120174,TRY2,TRY8,TRYP2

Gene Description: protease, serine, 2 (trypsin 2)

Omim ID: [601564](#)

Gene Ontology: [Hyperlink](#)

Gene Summary: This gene encodes a trypsinogen, which is a member of the trypsin family of serine proteases. This enzyme is secreted by the pancreas and cleaved to its active form in the small intestine. It is active on peptide linkages involving the carboxyl group of lysine or arginine. This gene and several other trypsinogen genes are localized to the T cell receptor beta locus on chromosome 7. [provided by RefSeq]

Other Designations: anionic trypsinogen,protease serine 2 preproprotein,protease, serine, 2,protease, serine, 2, preproprotein,trypsin 2,trypsin II,trypsinogen 2

Gene Pathway

[Neuroactive ligand-receptor interaction](#)

Related Disease

[Adenocarcinoma](#) [Chronic Disease](#) [Genetic Predisposition to Disease](#) [Pancreatic cancer](#) [Pancreatic Neoplasms](#) [Pancreatitis](#) [Pancreatitis, Acute Necrotizing](#) [Pancreatitis, Alcoholic](#) [Pancreatitis, Chronic](#)

[服務條款](#) | [隱私權政策](#) | [著作及商標](#) | [網站地圖](#)

©2016 亞諾法生技股份有限公司 Abnova Corporation. 版權所有.